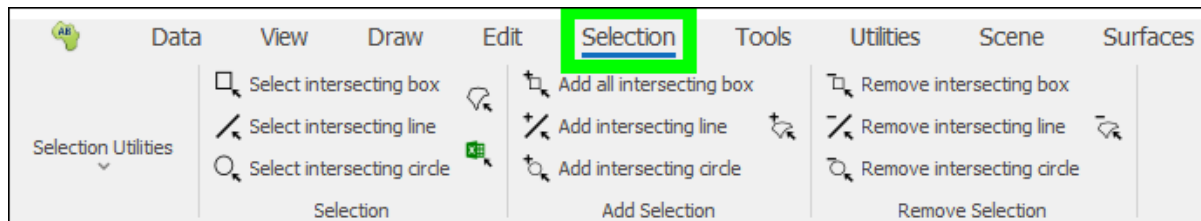




Selection Tab User Guide



Contents

Selection Tab User Guide	1
Intro	2
Selection Basics	2
Selection Utilities	12
Select by clicking.....	13
Select by location.....	13
Select all.....	14
Select None	15
Invert Selection.....	16
Show Selected.....	18
Hide Selected.....	30
Reset Hidden.....	31
Isolate Selected	32
Select in Layer	34
Select by Layer	36
Zoom to selection	39
Selection	41
Select intersecting box.....	41
Select intersecting line.....	43
Select intersecting circle.....	45

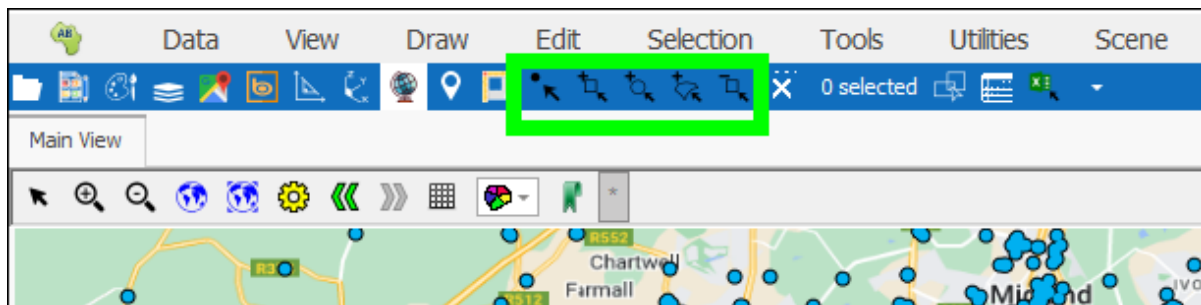
Select intersecting polygon.....	47
Select selected elements in Excel	49
Add Selection	53
Remove Selection.....	54

Intro

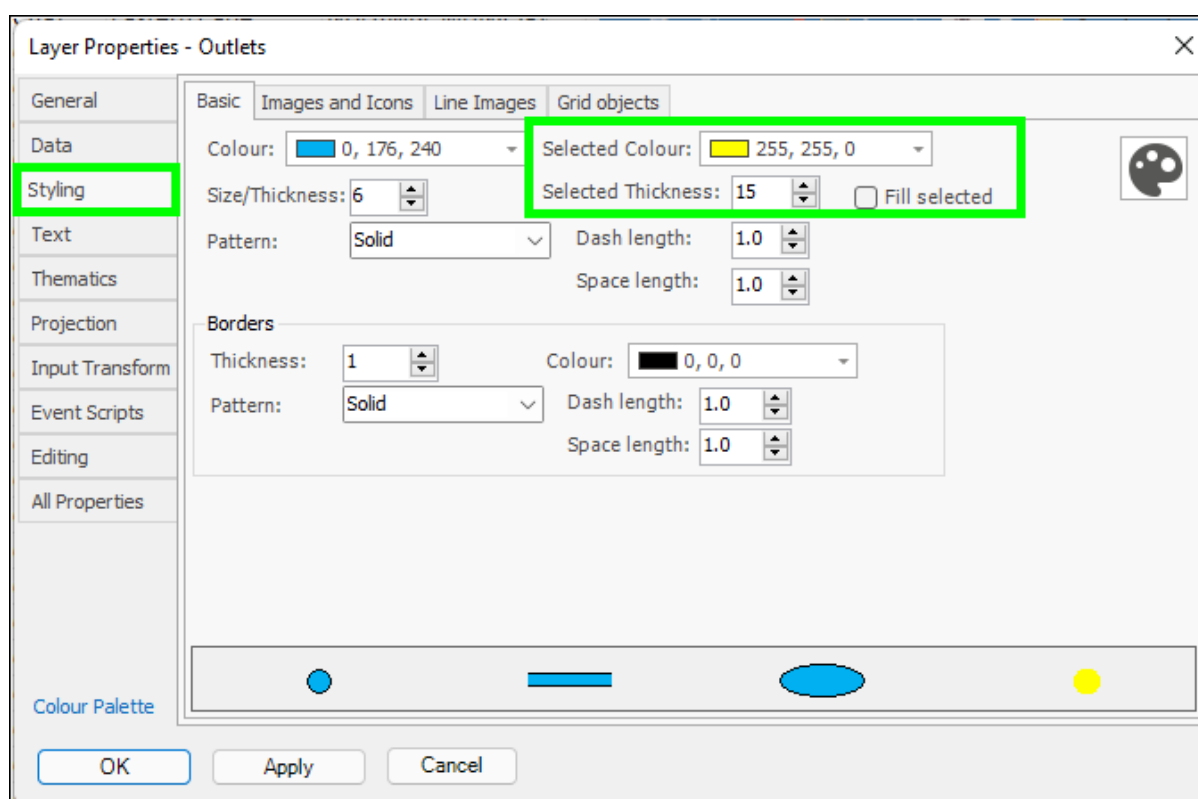
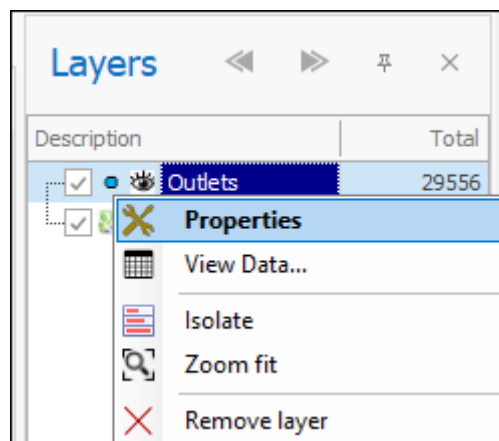
The **Selection** tab has a number of tools you can use for selecting elements in your scene. We will take up each section of this tab:

Selection Basics

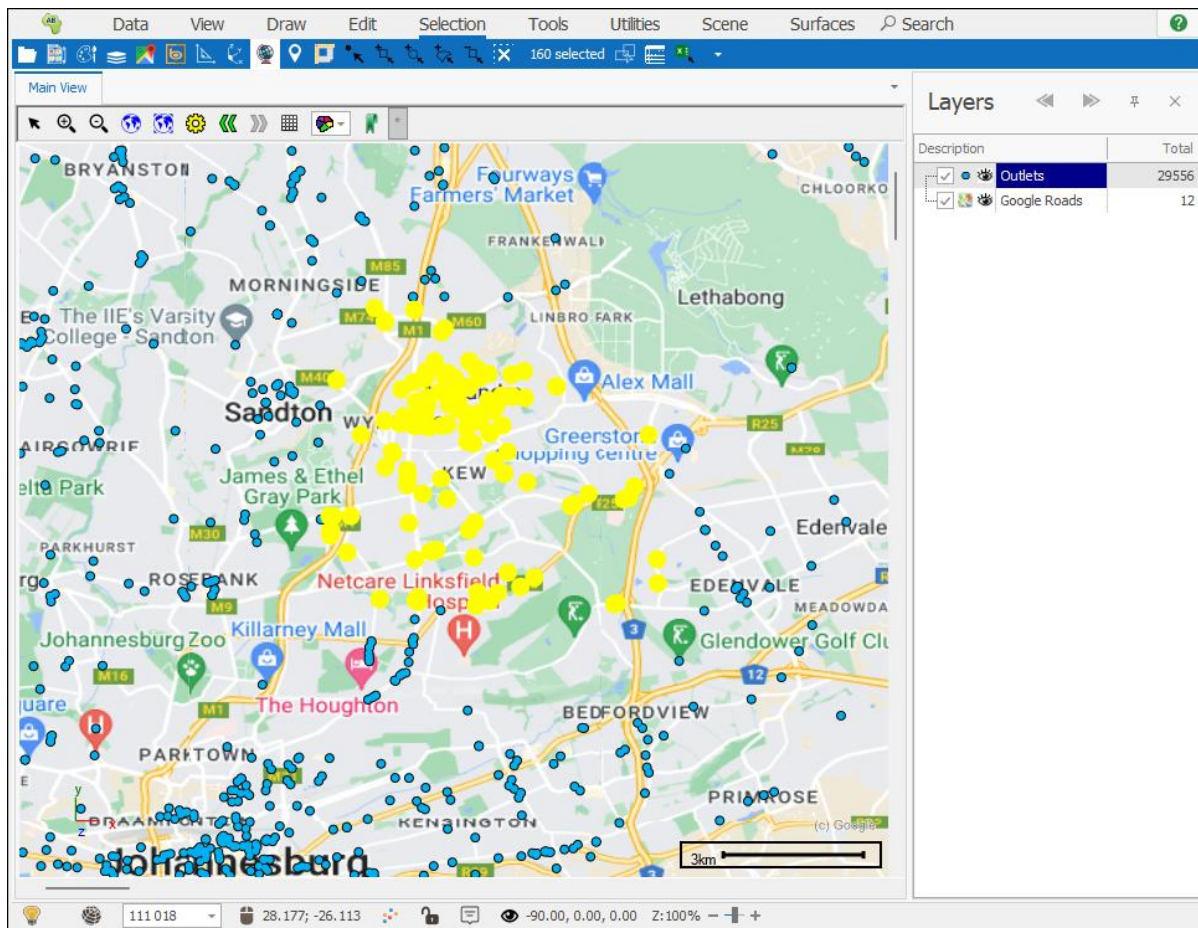
Items are selected in the spatial scene in order to isolate them from others and then inspect them or do various other things with them. All the various tools that can be used to select are available in the Selection Tab, however the main selection tools you would use most often are accessible from the Quick Access Toolbar as well:



As you select items they are highlighted in the scene in a different colour and sized a bit bigger to make them stand out from the other elements in that layer. This highlighted colour and size can be set in the Layer Properties of the layer in which you are selecting elements, in the **Styling** tab:

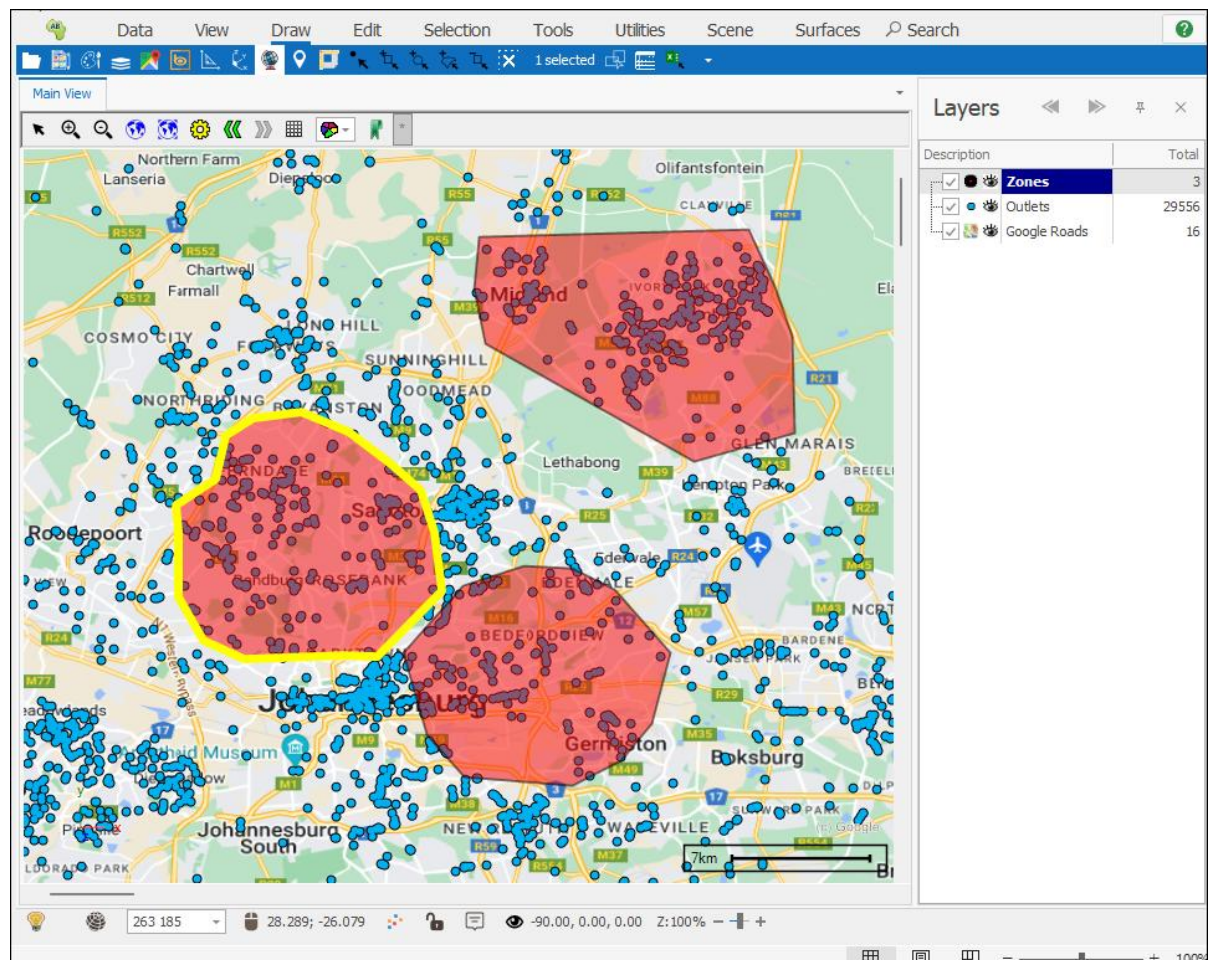
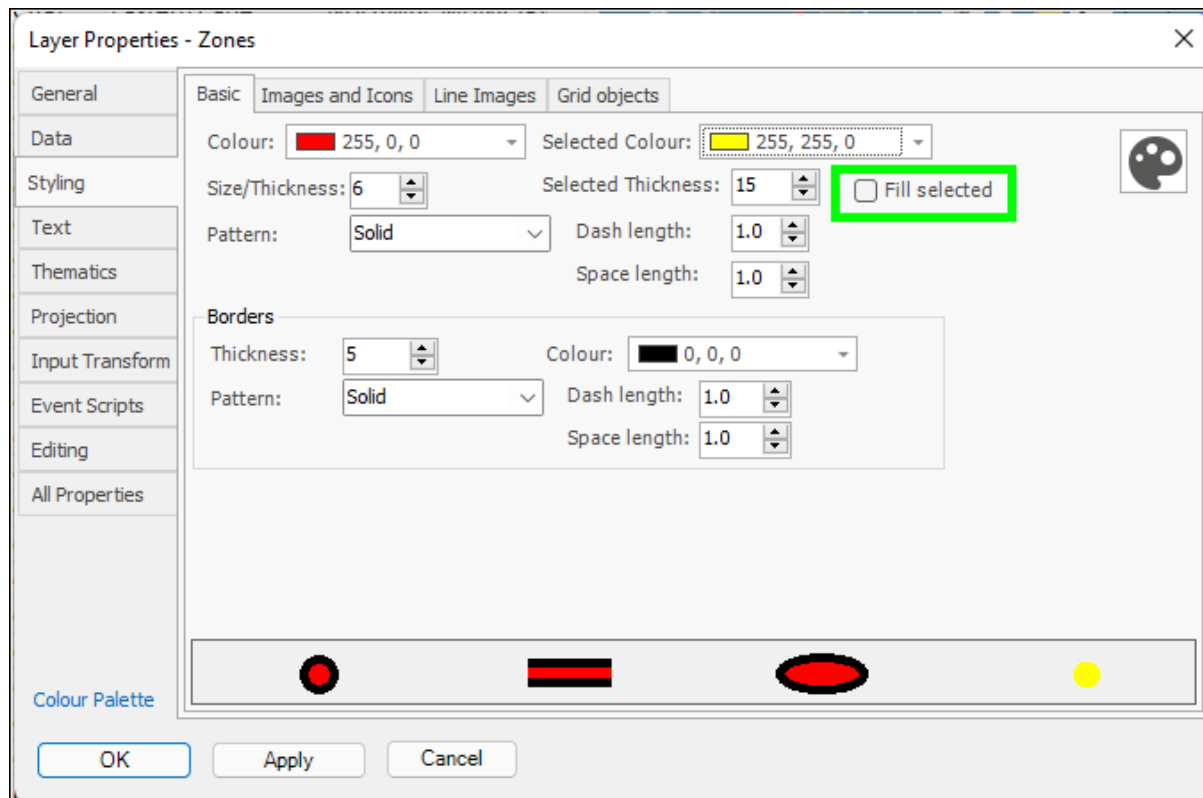


Selection Tab User Guide

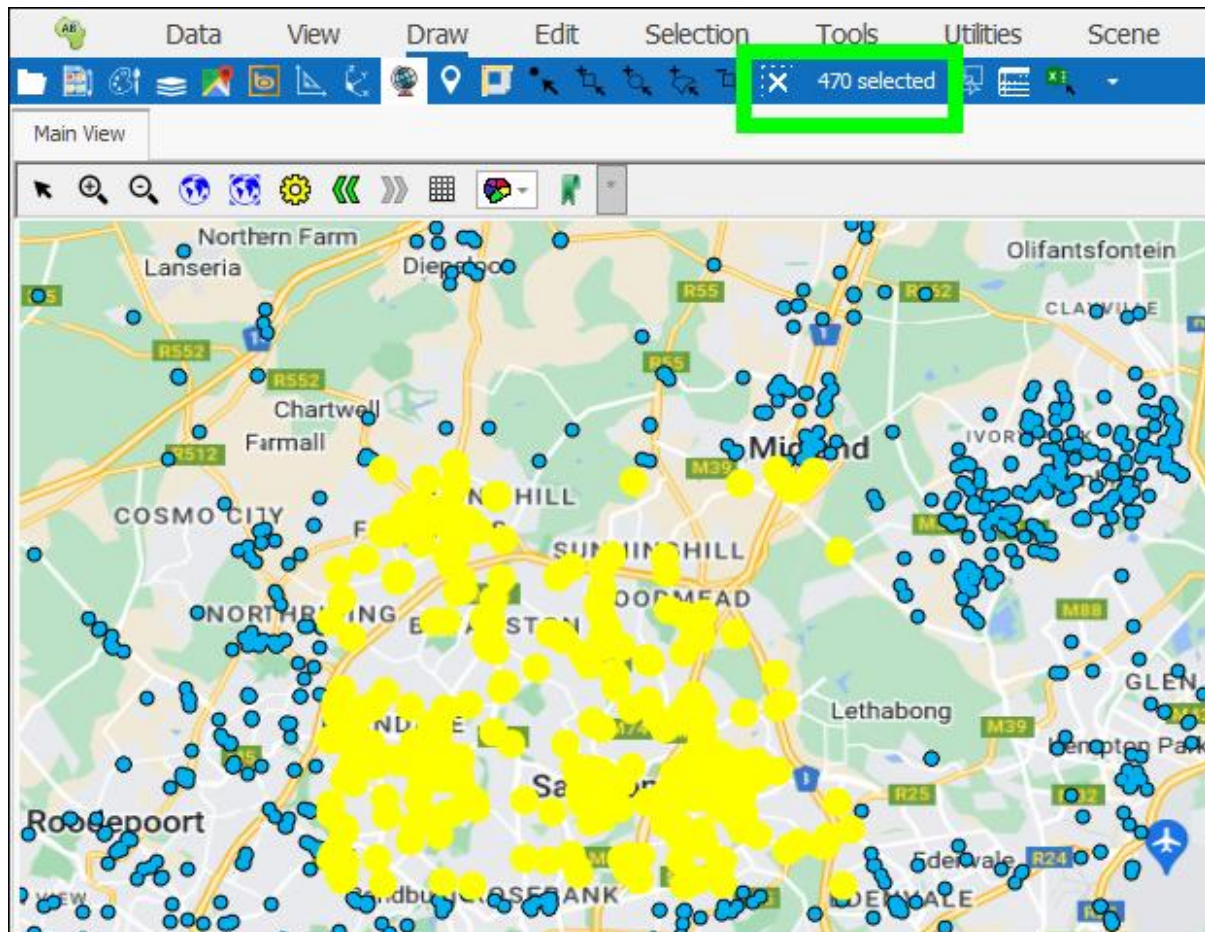


Fill selected can be ticked on if you want the entire element to be highlighted, otherwise just the border of the element is highlighted, this is in the case of polygon elements:

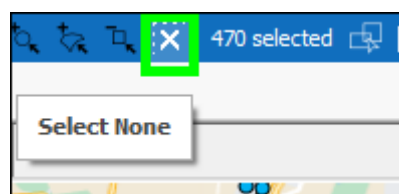
Selection Tab User Guide

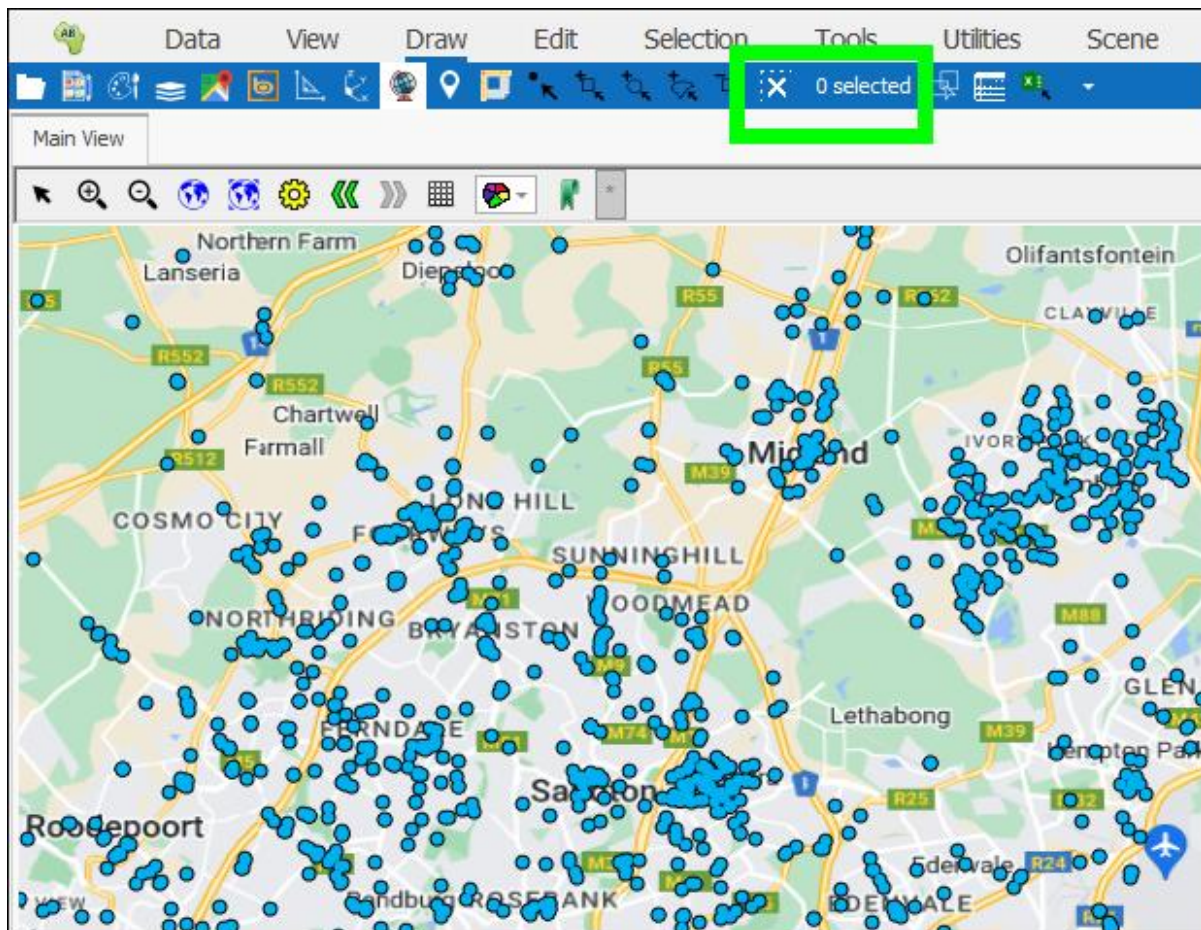


As you select items in your scene, the number of selected items is displayed in the **Number of selected items** box in the blue Quick Access Toolbar:

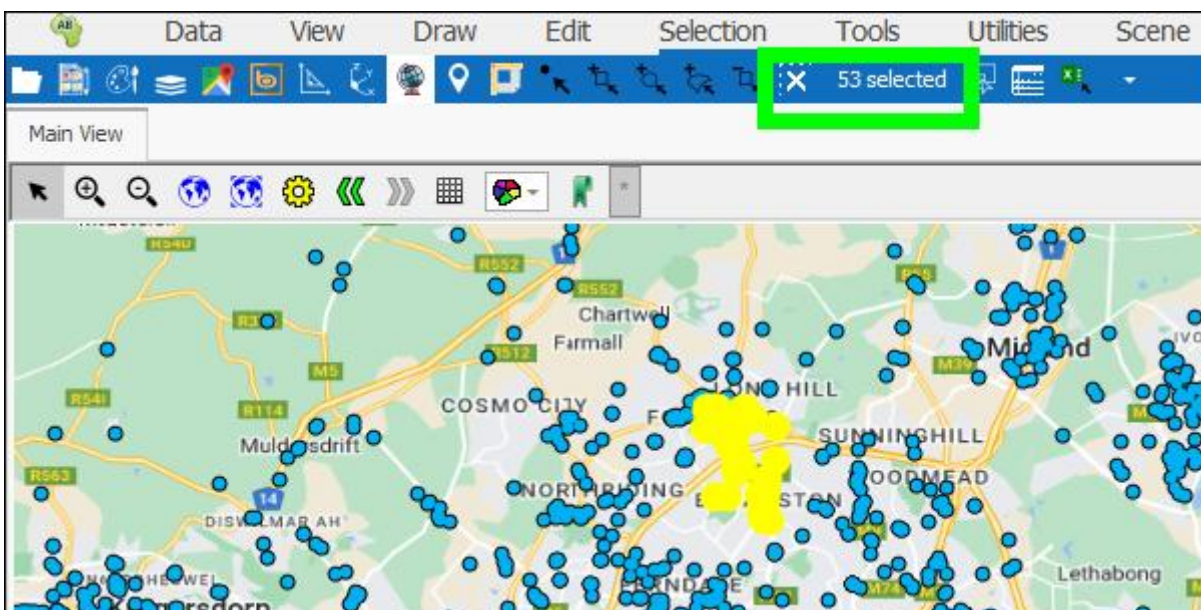


To clear the selection and have no elements selected you can simply click the x next to the number of selected items:



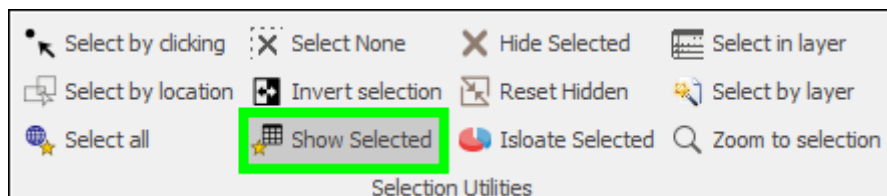


By clicking on the **Number of selected items** box you can bring up a dialogue showing the list of selected items with various data about them such as which layer they belong to etc.:

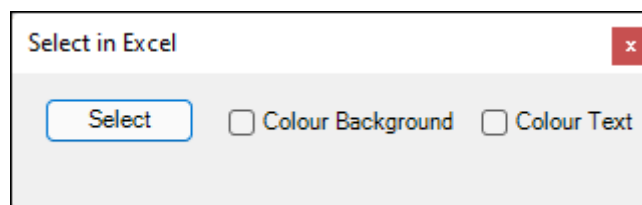
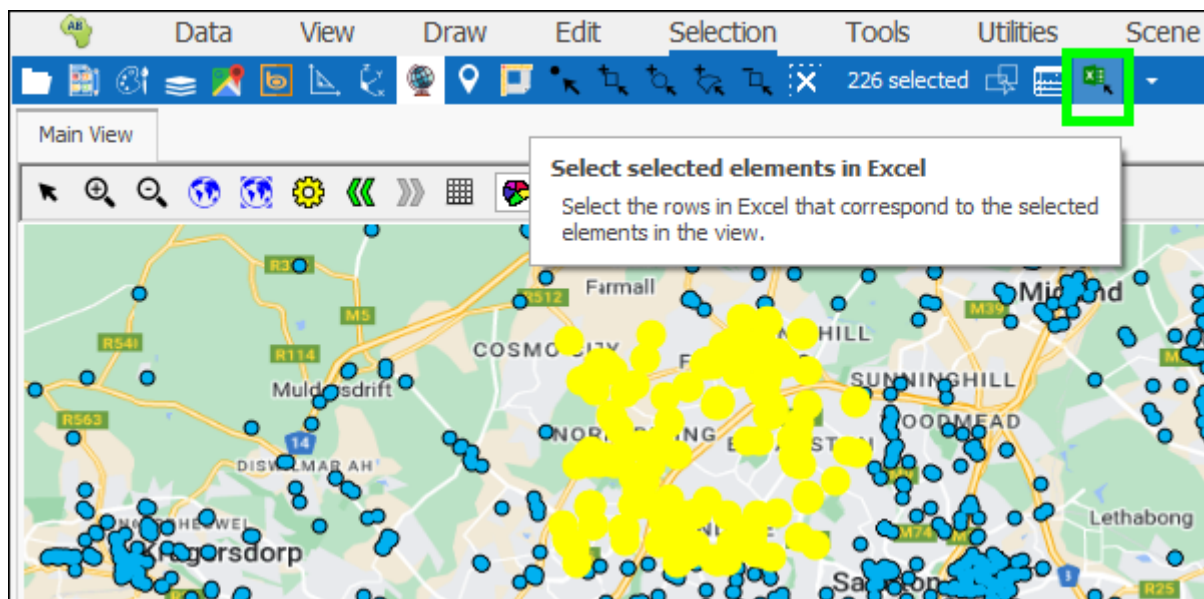


Selected Objects						
Drag a column header here to group by that column						
	Layer	Geometry	Length	Area	Volume	
▼	REC	=	=	=	=	
▶	+	Outlets	POINT(28.02315 ...	0	0	0
	+	Outlets	POINT(28.02367 ...	0	0	0
	+	Outlets	POINT(28.01352 ...	0	0	0
	+	Outlets	POINT(28.023735...	0	0	0
	+	Outlets	POINT(28.027401...	0	0	0
	+	Outlets	POINT(28.012981...	0	0	0
	+	Outlets	POINT(28.021925...	0	0	0
	+	Outlets	POINT(28.01473 ...	0	0	0
	+	Outlets	POINT(28.0147 -...	0	0	0
	+	Outlets	POINT(28.01465	0	0	0
			53			

This dialogue can be accessed in the **Selection** tab as well (see [Show Selected Tool](#)).



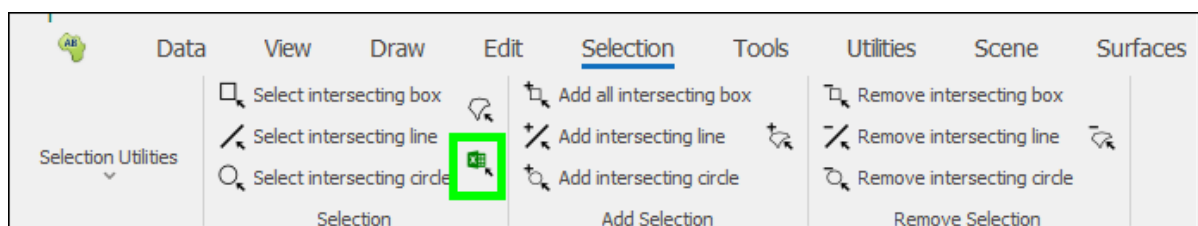
Once you have selected items in your scene you can then have the associated attribute data rows selected as well in Excel, in the case of SpatialXL. This can be done by clicking the **Select selected elements in Excel** button in the Quick Access Toolbar:



Selection Tab User Guide

	A	B	C	D	E	F	
1	CODE	CUSTOMER NAME	LONGITUDE	LATITUDE	PROVINCE	REGION	MUNICIPALITY
29143	15389	BP**MARYVALE SERVICE STATION	28.085566	-26.156295	GAUTENG	Western Gauteng	CITY OF JOHANNE
29144	15239	LIQUOR & ICE	28.083437	-26.16331	GAUTENG	Western Gauteng	CITY OF JOHANNE
29145	964	KHAN SUPERMARKET	28.019984	-26.205384	GAUTENG	Western Gauteng	CITY OF JOHANNE
29146	35644	MALIHA HAWKERSLINE SUPERMARKET	28.045099	-26.194616	GAUTENG	Western Gauteng	CITY OF JOHANNE
29147	21275	BP**NORWOOD	28.076379	-26.15978	GAUTENG	Western Gauteng	CITY OF JOHANNE
29148	20492	FRESH PRODUCE OF ALEXANDER	28.056757	-26.086678	GAUTENG	Western Gauteng	CITY OF JOHANNE
29149	28531	DIPANANA ENTERPRISE	28.097368	-26.108228	GAUTENG	Western Gauteng	CITY OF JOHANNE
29150	5528	SIMUNYE LIQUOR STORE	28.102121	-26.112007	GAUTENG	Western Gauteng	CITY OF JOHANNE
29151	8188	PRINCESS COURT TUCKSHOP	28.099928	-26.10954	GAUTENG	Western Gauteng	CITY OF JOHANNE
29152	22674	NUTS ABOUT YOU	27.99476	-26.03876	GAUTENG	Western Gauteng	CITY OF JOHANNE
29153	36619	MAFAHLA SUPERMARKET	28.00637	-25.92734	GAUTENG	Western Gauteng	CITY OF JOHANNE
29154	8149	PICK N PAY LIQUOR**CEDAR SQUARE	28.002104	-26.021011	GAUTENG	Western Gauteng	CITY OF JOHANNE
29155	27941	RIETFontein SUPERMARKET	27.78014	-26.030504	GAUTENG	Western Gauteng	MOGALE CITY MU
29156	29227	THE MATADOR**BOTTLE STORE	27.977972	-26.105134	GAUTENG	Western Gauteng	CITY OF JOHANNE
29157	22342	THE BILTONG NOOK	28.075001	-26.066735	GAUTENG	Western Gauteng	CITY OF JOHANNE
29158	4235	365 LIQUOR STORE PETER ROAD	27.9021	-26.06271	GAUTENG	Western Gauteng	CITY OF JOHANNE
29159	29745	BEST BUY LIQUORS	27.972026	-26.091983	GAUTENG	Western Gauteng	CITY OF JOHANNE
29160	8894	LADS ZANDSPRUIT	27.90232	-26.06241	GAUTENG	Western Gauteng	CITY OF JOHANNE
29161	31977	COSMIC CANDY MONTECASINO	28.009397	-26.032506	GAUTENG	Western Gauteng	CITY OF JOHANNE
29162	12857	PLUMBERS & IRRIGATION WAREHOUSE	27.9463	-26.033077	GAUTENG	Western Gauteng	CITY OF JOHANNE
29163	39500	SAVE RITE SUPERMARKET	27.954422	-26.060841	GAUTENG	Western Gauteng	CITY OF JOHANNE
29164	25134	FRIENDLY 7 ELEVEN**WELTEVREDENPARK	27.91616	-26.13144	GAUTENG	Western Gauteng	CITY OF JOHANNE
29165	8240	SMOKIN BOOKS	27.98414	-26.14542	GAUTENG	Western Gauteng	CITY OF JOHANNE
29166	19153	WEILERS FARMS LIQUORS	27.91021	-26.42385	GAUTENG	Western Gauteng	MIDVAAL MUNICI
29167	25383	KHASHRU & BROTHERS	26.662879	-26.86401	NORTH WEST	Western Gauteng	CITY COUNCIL OF
29168	12542	JC TUCKSHOP	27.825043	-26.281938	GAUTENG	Western Gauteng	CITY OF JOHANNE
29169	38832	NDABA SPAZATAINER	27.82082	-26.24203	GAUTENG	Western Gauteng	CITY OF JOHANNE
29170	25629	CICRO INTERNET CAFE	27.846655	-26.26062	GAUTENG	Western Gauteng	CITY OF JOHANNE
29171	24804	MAKHETHENG GENERAL DEALER	27.833639	-26.25541	GAUTENG	Western Gauteng	CITY OF JOHANNE
29172	35995	MTHEMBU'S CIGARETTES	27.875457	-26.224406	GAUTENG	Western Gauteng	CITY OF JOHANNE
29173	39965	HAPPY COW BUTCHERY	27.852	-26.2688	GAUTENG	Western Gauteng	CITY OF JOHANNE
29174	23626	MOLETSANE CASH STORE	27.8489	-26.2566	GAUTENG	Western Gauteng	CITY OF JOHANNE
29175	856	MBATHAS TUCKSHOP	27.855699	-26.259091	GAUTENG	Western Gauteng	CITY OF JOHANNE
29176	27171	MOTSHOANE GENERAL DEALER	27.8566	-26.2664	GAUTENG	Western Gauteng	CITY OF JOHANNE
29177	34655	PROGRESS PICK A SPAZA	27.8564	-26.2659	GAUTENG	Western Gauteng	CITY OF JOHANNE
29178	36420	LEFAFATSANE TRADING	27.849726	-26.252456	GAUTENG	Western Gauteng	CITY OF JOHANNE

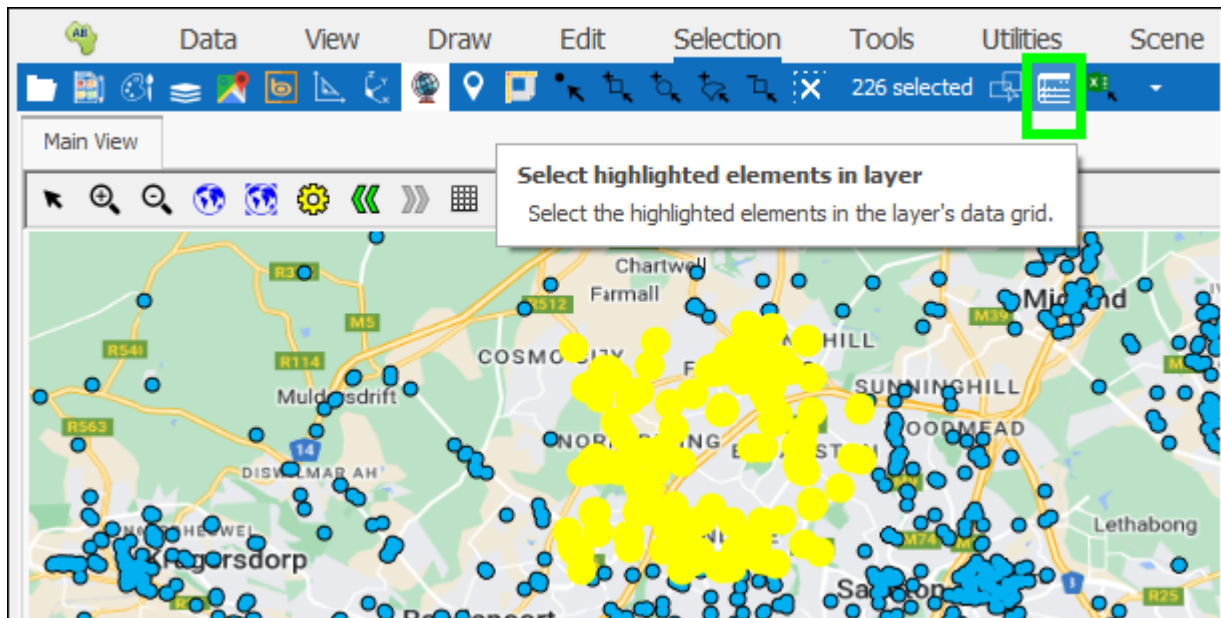
This tool is also available in the **Selection** tab:



For full data on the **Select selected elements in Excel** tool refer to the [Select selected elements in Excel](#) section where this tool is covered.

Selection Tab User Guide

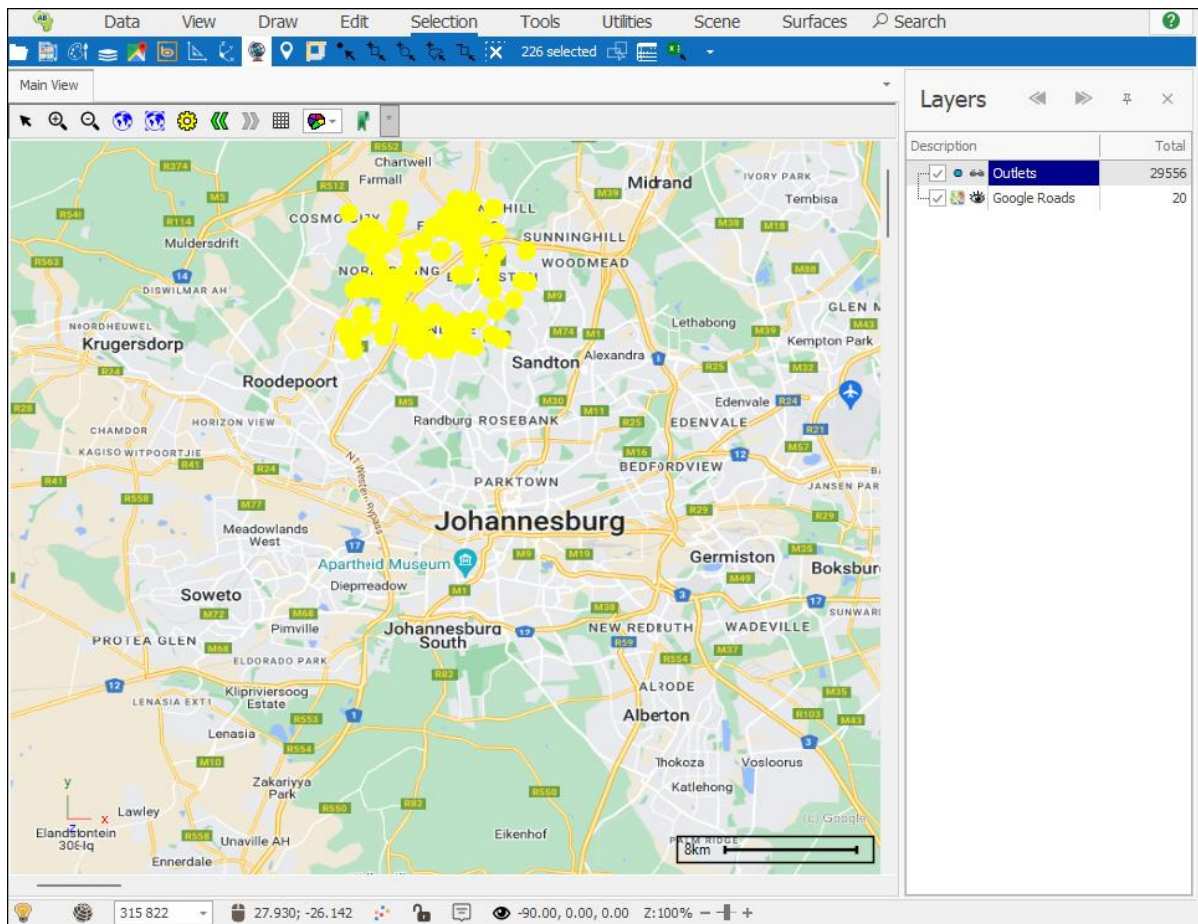
You can have the associated attribute data rows selected in the Layer Data Grid of the layer you are selecting elements in by clicking the **Select highlighted elements in layer** button in the Quick Access Toolbar, this will bring up the grid and filter out the associated rows, which will filter your scene as well:



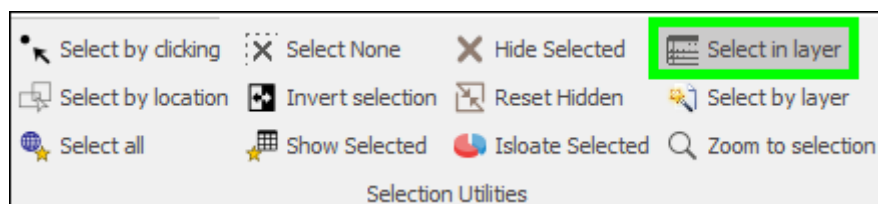
The screenshot shows the 'Layer Data: Outlets' window. The 'Main' tab is active, displaying a toolbar with various actions like Filter Graphics, Columns, Refresh, Inplace, Delete, Properties, Zoom, Zoom and Highlight, Pan, Highlight All, Un Highlight All, Highlight Selected, Copy, Copy Html, Export to Excel, Print, and Pivot. Below the toolbar is a data grid with 226 rows. The grid has columns for Row, CODE, CUSTOMER NAME, LONGITUDE, LATITUDE, PROVINCE, REGION, and MUNICIPALITY. The first few rows are highlighted in blue.

Row	CODE	CUSTOMER NAME	LONGITUDE	LATITUDE	PROVINCE	REGION	MUNICIPALITY
1672	9185	SASOL DELIGHT BROMHOFF	27.96869	-26.07786	GAUTENG	Western Gauteng	CITY OF JOHANNESBURG
7855	26386	YELLOW COSMETICS BUSINESS ENT	27.974337	-26.037331	GAUTENG	Western Gauteng	CITY OF JOHANNESBURG
12745	14803	O HAGANS~DOUGLASDALE	27.98916	-26.02512	GAUTENG	Western Gauteng	CITY OF JOHANNESBURG
12746	38270	BRYANSTON SPORTS CLUB	28.02315	-26.06223	GAUTENG	Western Gauteng	CITY OF JOHANNESBURG
12747	11975	THE BARON BRYANSTON	28.02367	-26.05175	GAUTENG	Western Gauteng	CITY OF JOHANNESBURG
12748	37907	THE FORUM DIMENSION DATA	28.01352	-26.044029	GAUTENG	Western Gauteng	CITY OF JOHANNESBURG
12749	14560	ADEGA~BRYANSTON	28.023735	-26.059948	GAUTENG	Western Gauteng	CITY OF JOHANNESBURG

Selection Tab User Guide

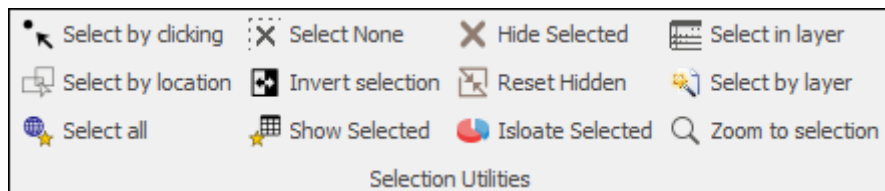


This tool is also available in the Selection tab, Selection Utilities section:



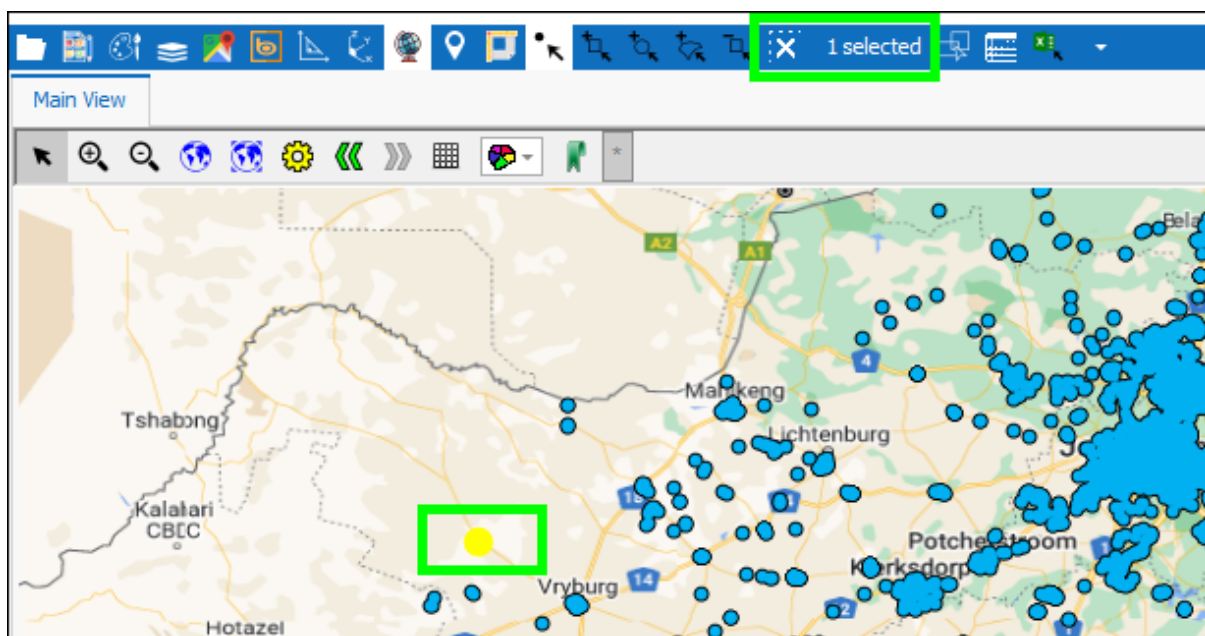
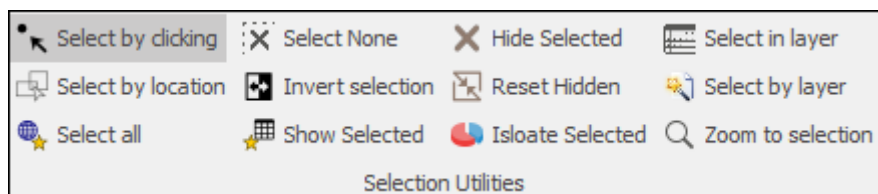
For full data on the Layer Data Grid and how it works refer to the [Layer Data Grid Guide](#).

Selection Utilities



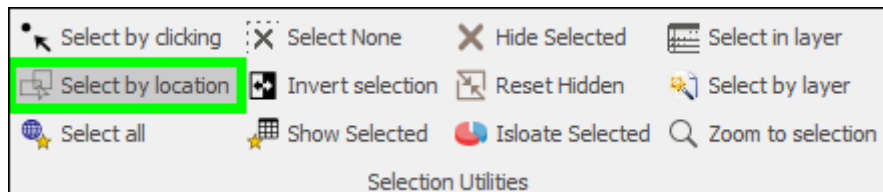
Select by clicking

The **Select by clicking** tool allows you to select individual elements in your scene by clicking; by clicking on the same element again you can unselect it. This tool will be greyed in the tab when you select it indicating that it is now active, the tool will remain active until you select it again at which point it will be ungreyed and no longer active:

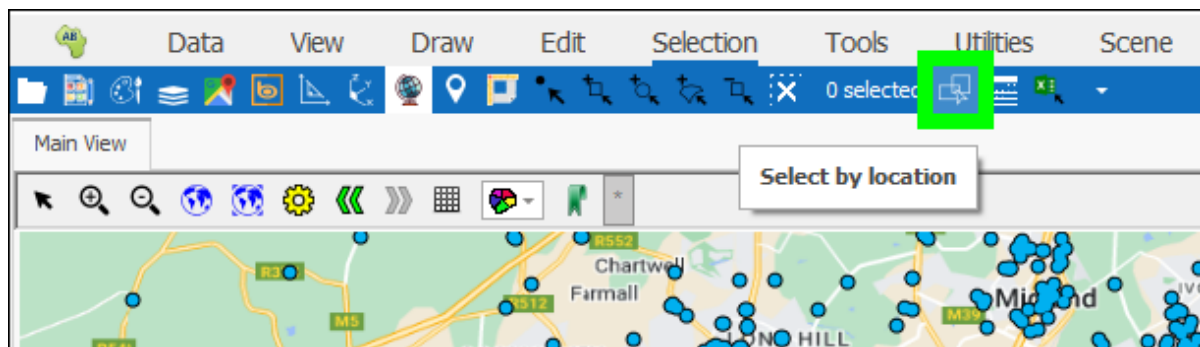


Select by location

The **Select by location** tool is very useful and allows you to select elements based on their intersection with, distance from etc. another element or elements, such as selecting all points that fall within a polygon area. For full data on how this tool works refer to the [Select by Location guide](#):

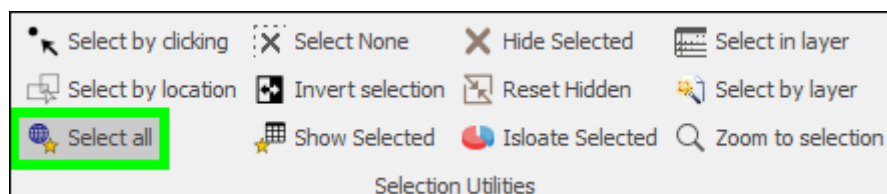


This tool can also be accessed from the Quick Access Toolbar:

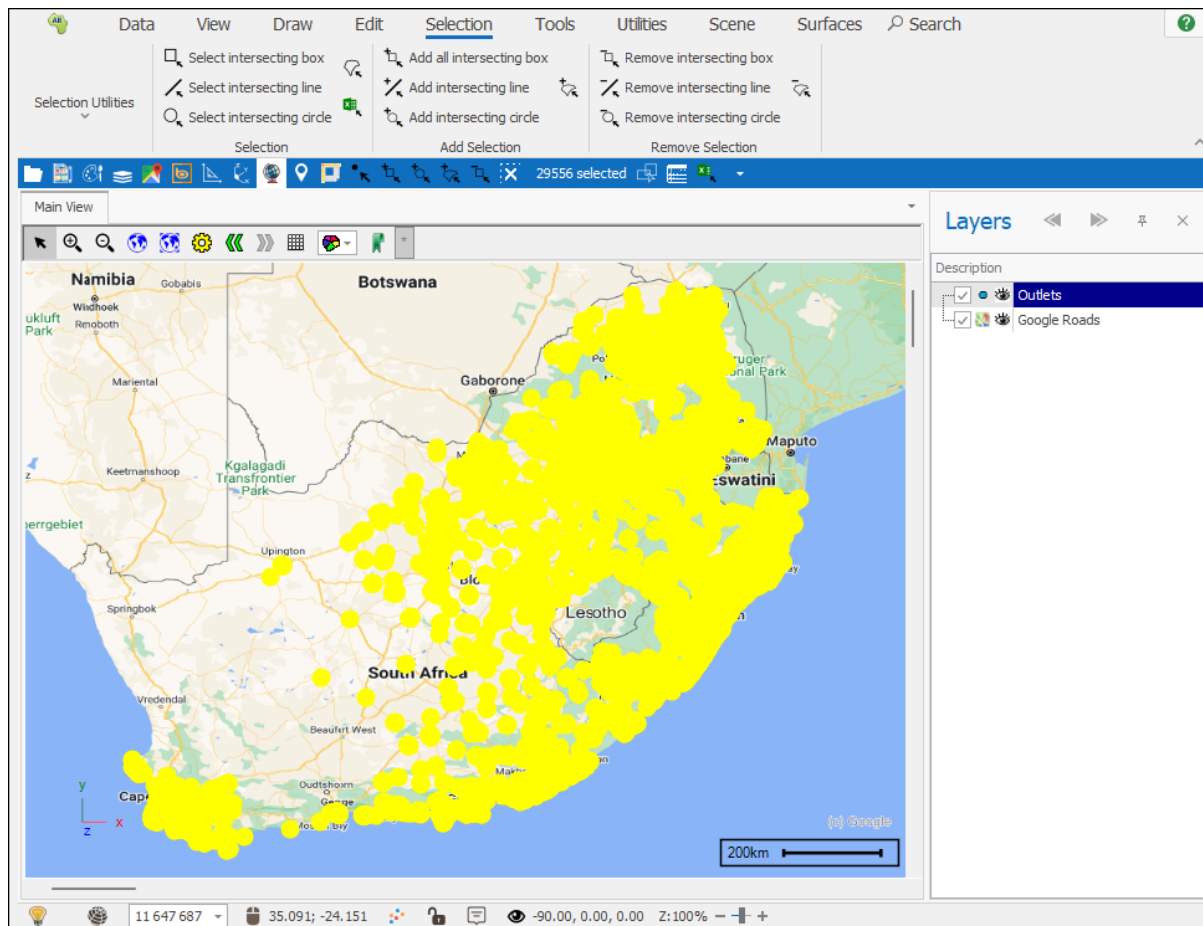


Select all

The **Select all** button will select every element in every layer:

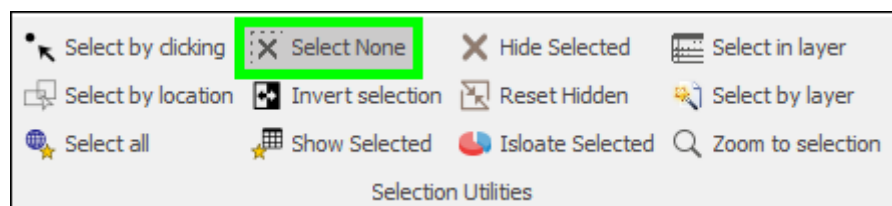


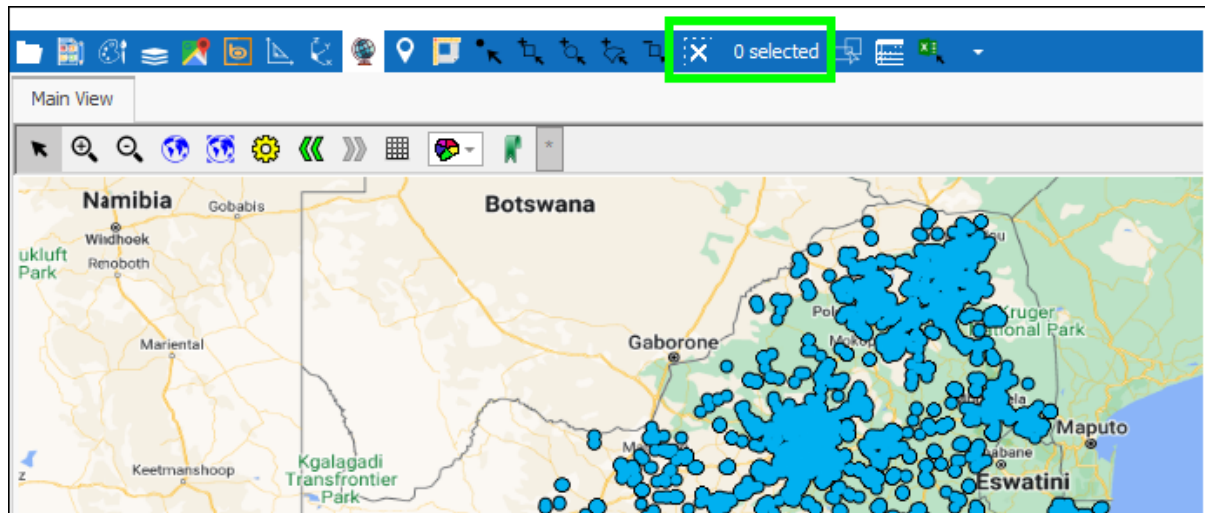
Selection Tab User Guide



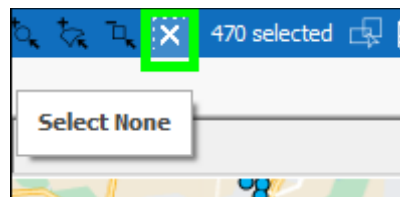
Select None

The **Select None** button will clear all selected elements:





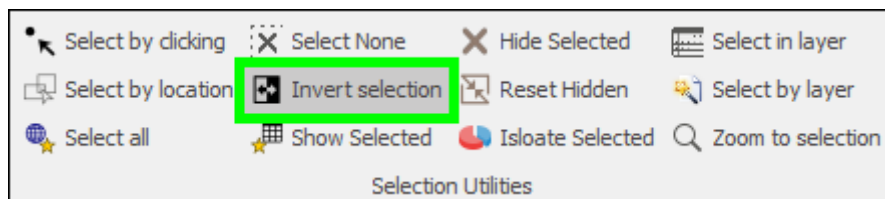
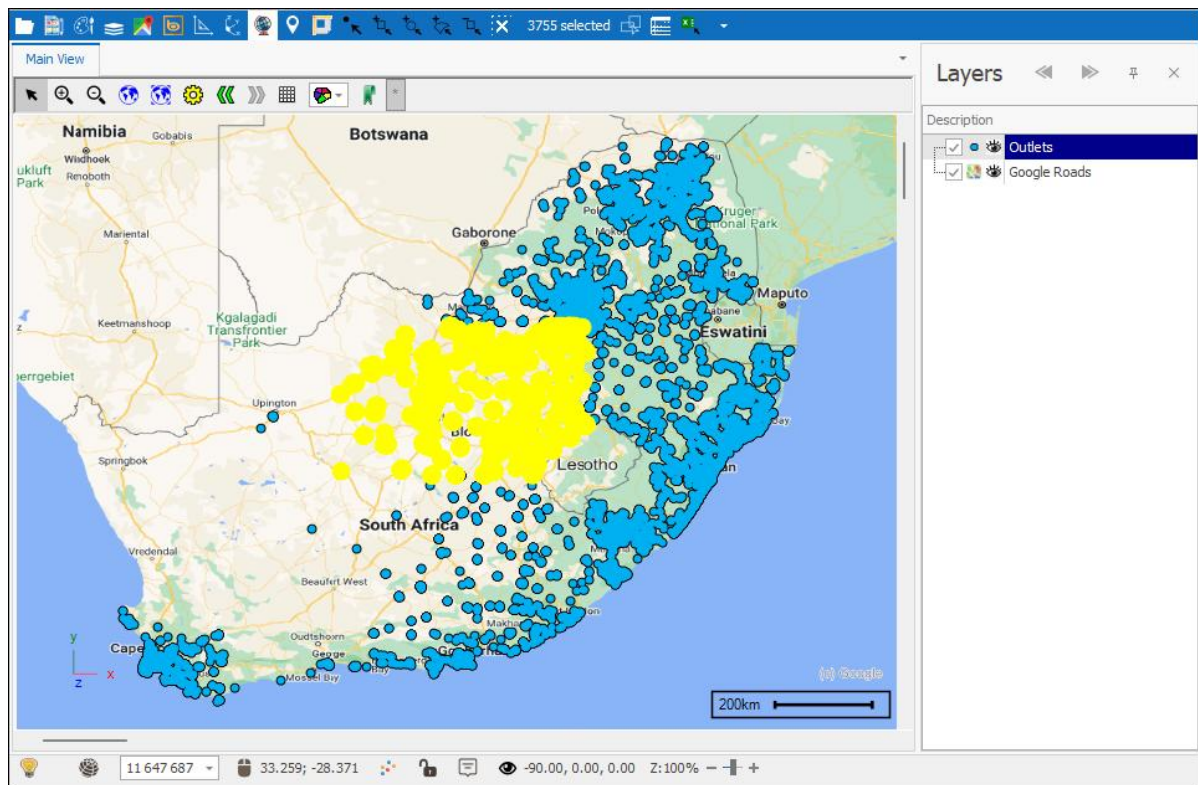
This same function can be accomplished by clicking the **x** next to the Number of selected items box in the Quick Access Toolbar:

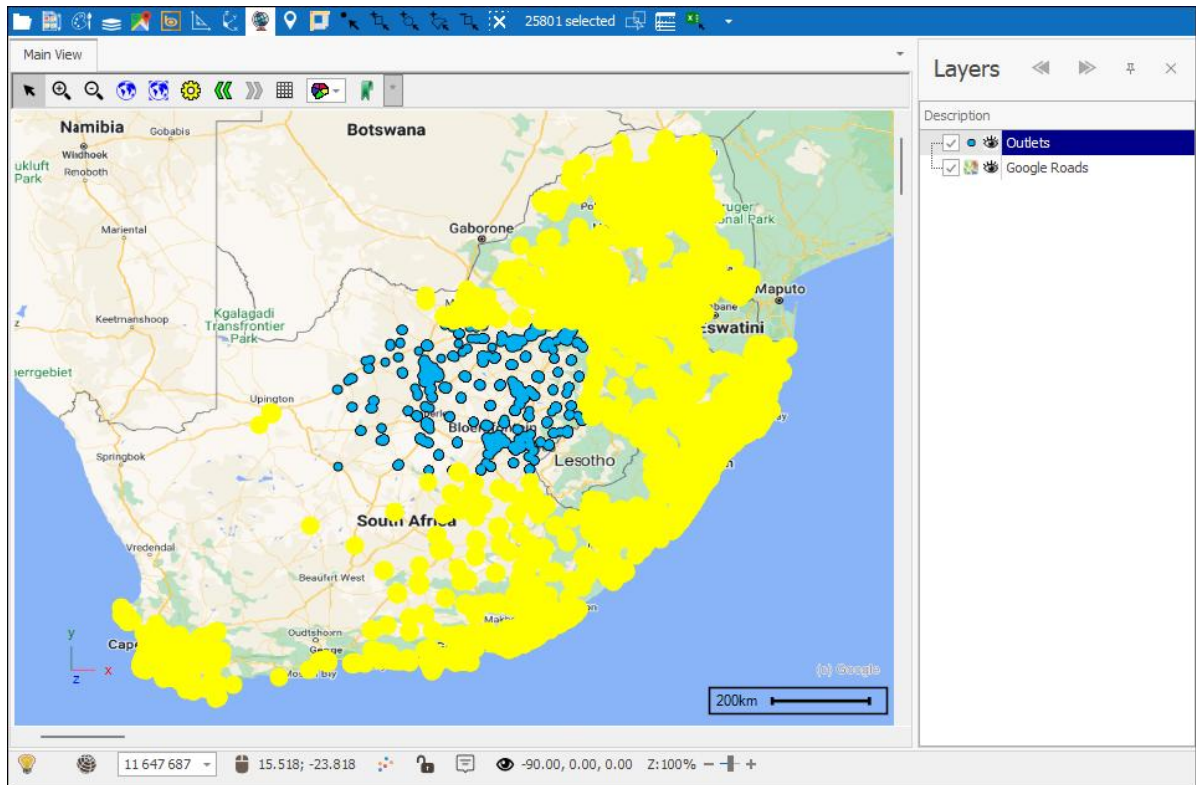


Invert Selection

Invert Selection will switch your selection around so that all currently selected elements are unselected, and all unselected elements are now selected:

Selection Tab User Guide

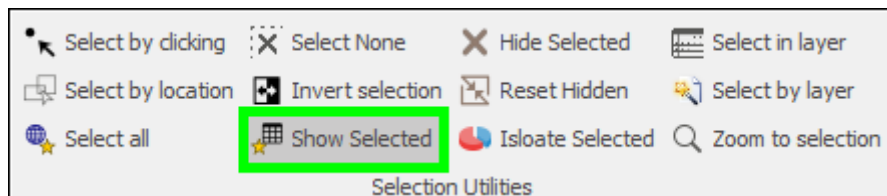
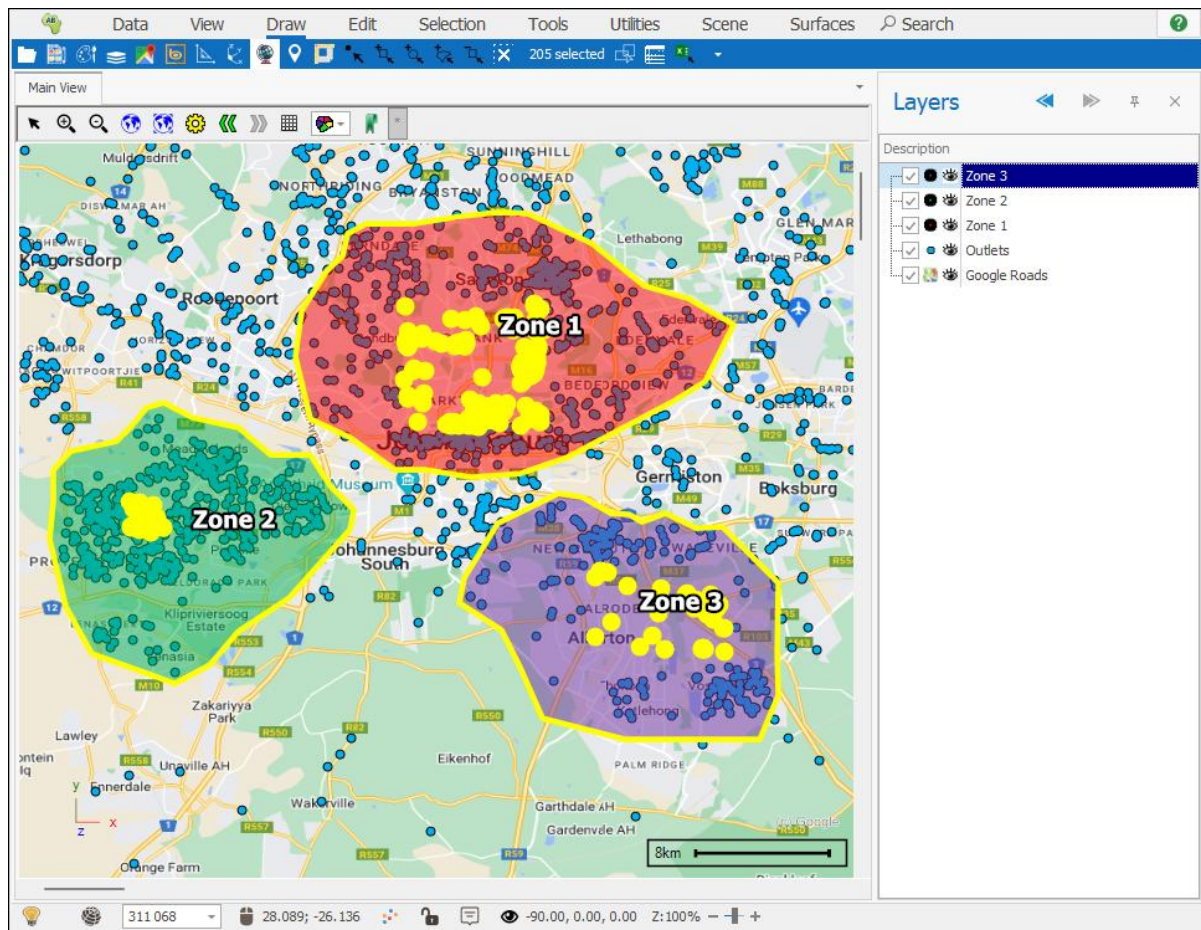




Show Selected

Show Selected will bring up a dialogue showing a list of the selected objects with data such as the Layer each object belongs to, its Geometry, as well as its Length, Area and Volume:

Selection Tab User Guide



Selection Tab User Guide

Selected Objects ×						
Drag a column header here to group by that column 🔍						
	Layer	Geometry	Length	Area	Volume	
▼	ABC	=	=	=	=	▲
⊕	Outlets	POINT(28.084595 -26.121639)	0	0	0	
⊕	Outlets	POINT(28.088142 -26.108082)	0	0	0	
⊕	Outlets	POINT(28.091356 -26.103199)	0	0	0	
⊕	Outlets	POINT(28.085656 -26.110108)	0	0	0	
⊕	Outlets	POINT(28.085657 -26.110109)	0	0	0	
⊕	Outlets	POINT(28.08452 -26.11992)	0	0	0	
⊕	Outlets	POINT(28.08445 -26.1231)	0	0	0	
⊕	Outlets	POINT(28.085656 -26.110108)	0	0	0	
⊕	Outlets	POINT(27.849726 -26.252456)	0	0	0	
⊕	Outlets	POINT(27.846511 -26.25251)	0	0	0	
⊕	Outlets	POINT(27.856693 -26.24157)	0	0	0	
⊕	Zone 1	POLYGON((28.1041607736224 -26.21339355...	0.668009...	0.0294143...	0	
⊕	Zone 2	POLYGON((27.9386128546139 -26.29715340...	0.540232...	0.0199580...	0	
⊕	Zone 3	POLYGON((28.1388970003114 -26.38151887...	0.561473...	0.0210563...	0	
117						

A count of the selected items is shown at the bottom of the Geometry column. You can get Counts and Sums etc. of the data in this grid by right clicking at the bottom of any column and selecting the desired aggregation:

Selection Tab User Guide

Selected Objects ×						
Drag a column header here to group by that column 🔍						
	Layer	Geometry	Length	Area	Volume	
▼	ABC	=	=	=	=	▲
+	Outlets	POINT(28.084595 -26.121639)	0	0	0	
+	Outlets	POINT(28.088142 -26.108082)	0	0	0	
+	Outlets	POINT(28.091356 -26.103199)	0	0	0	
+	Outlets	POINT(28.085656 -26.110108)	0	0	0	
+	Outlets	POINT(28.085657 -26.110109)	0	0	0	
+	Outlets	POINT(28.08452 -26.11992)	0	0	0	
+	Outlets	POINT(28.08445 -26.1231)	0	0	0	
+	Outlets	POINT(28.085656 -26.110108)	0	0	0	
+	Outlets	POINT(27.849726 -26.252456)	0	0	0	
+	Outlets	POINT(27.846511 -26.25251)	0	0	0	
+	Outlets	POINT(27.856693 -26.24157)	0	0	0	
+	Zone 1	POLYGON((28.1041607736224 -26.21339355...	0.668009...	0.0294143...	0	
+	Zone 2	POLYGON((27.9386128546139 -26.29715340...	0.540232...	0.0199580...	0	
+	Zone 3	POLYGON((28.1388970003114 -26.38151887...	0.561473...	0.0210563...	0	
			117			
				<div> Σ Sum </div> <div> ▮ Min </div> <div> ▮ Max </div> <div> N Count </div> <div> Σ/n Average </div> <div> <input checked="" type="checkbox"/> None </div>		

Selection Tab User Guide

Selected Objects ×						
Drag a column header here to group by that column 🔍						
	Layer	Geometry	Length	Area	Volume	
▼	ABC	=	=	=	=	▲
⊕	Outlets	POINT(28.084595 -26.121639)	0	0	0	
⊕	Outlets	POINT(28.088142 -26.108082)	0	0	0	
⊕	Outlets	POINT(28.091356 -26.103199)	0	0	0	
⊕	Outlets	POINT(28.085656 -26.110108)	0	0	0	
⊕	Outlets	POINT(28.085657 -26.110109)	0	0	0	
⊕	Outlets	POINT(28.08452 -26.11992)	0	0	0	
⊕	Outlets	POINT(28.08445 -26.1231)	0	0	0	
⊕	Outlets	POINT(28.085656 -26.110108)	0	0	0	
⊕	Outlets	POINT(27.849726 -26.252456)	0	0	0	
⊕	Outlets	POINT(27.846511 -26.25251)	0	0	0	
⊕	Outlets	POINT(27.856693 -26.24157)	0	0	0	
⊕	Zone 1	POLYGON((28.1041607736224 -26.21339355...	0.668009...	0.0294143...	0	
⊕	Zone 2	POLYGON((27.9386128546139 -26.29715340...	0.540232...	0.0199580...	0	
⊕	Zone 3	POLYGON((28.1388970003114 -26.38151887...	0.561473...	0.0210563...	0	
			117	SUM=0.07		

You can zoom or pan to a specific item in the scene by right clicking on it in the grid and selecting **Zoom Selected/Pan Selected**:

Selection Tab User Guide

Selected Objects ✕						
Drag a column header here to group by that column 🔍						
	Layer	Geometry	Length	Area	Volume	
▼	REC	=	=	=	=	▲
+	Outlets	POINT(28.084595 -26.121639)	0	0	0	
+	Outlets	POINT(28.088142 -26.108082)	0	0	0	
+	Outlets	POINT(28.091356 -26.103199)	0	0	0	
+	Outlets	POINT(28.085656 -26.110108)	0	0	0	
+	Outlets	POINT(28.085657 -26.110109)	0	0	0	
+	Outlets	POINT(28.08452 -26.11992)	0	0	0	
+	Outlets	POINT(28.08445 -26.1231)	0	0	0	
+	Outlets	POINT(28.085656 -26.110108)	0	0	0	
+	Outlets	POINT(27.849726 -26.252456)	0	0	0	
+	Outlets	POINT(27.846511 -26.25251)	0	0	0	
+	Outlets	POINT(27.856693 -26.24157)	0	0	0	
▶	Zone 1	POLYGON((28.1041607736224 -26.21339355...	0.668009...	0.0294143...	0	
+	Zone 2	546139 -26.29715340...	0.540232...	0.0199580...	0	
+	Zone 3	003114 -26.38151887...	0.561473...	0.0210563...	0	
			117	SUM=0.07		

🔍 Zoom selected

📏 Pan Selected

★ Select

↶ Unselect

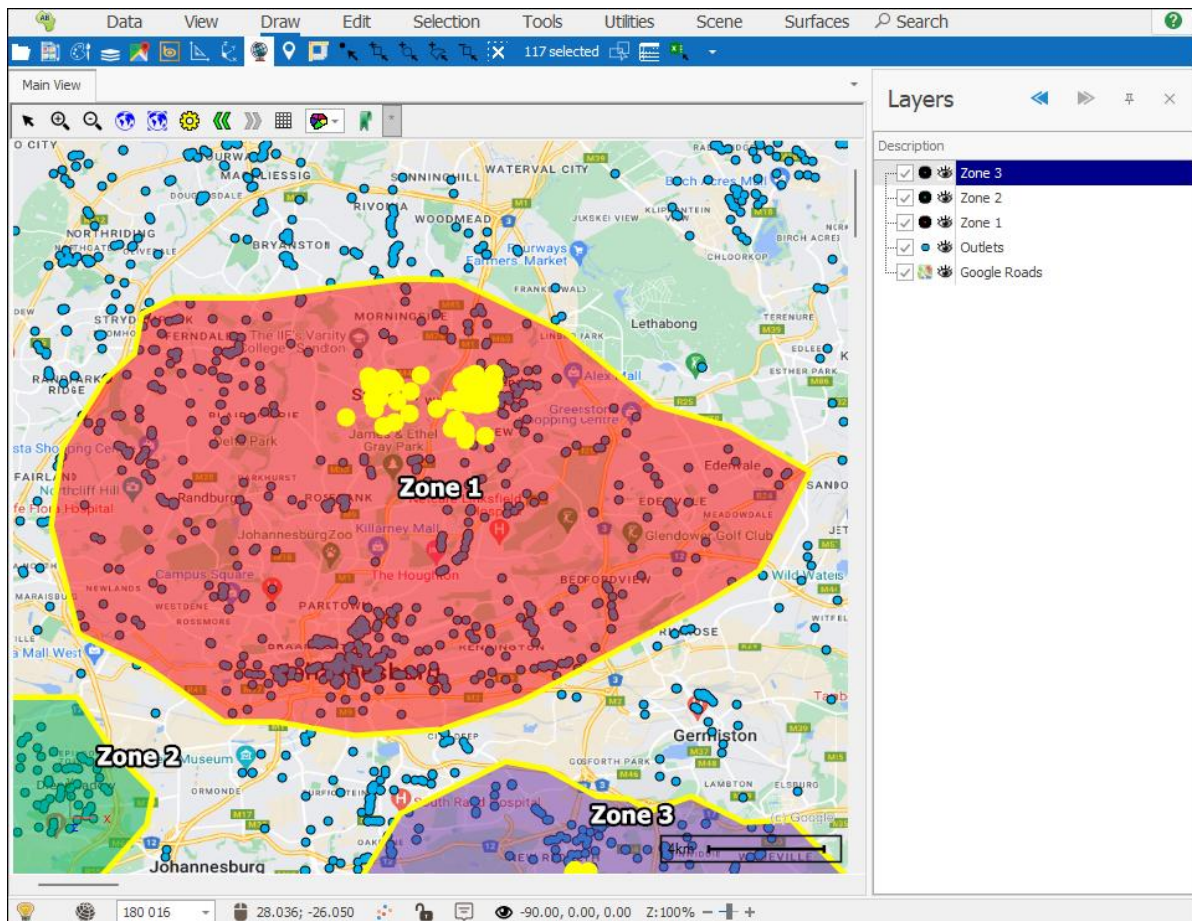
📄 Copy Selected Data

🔍 Properties

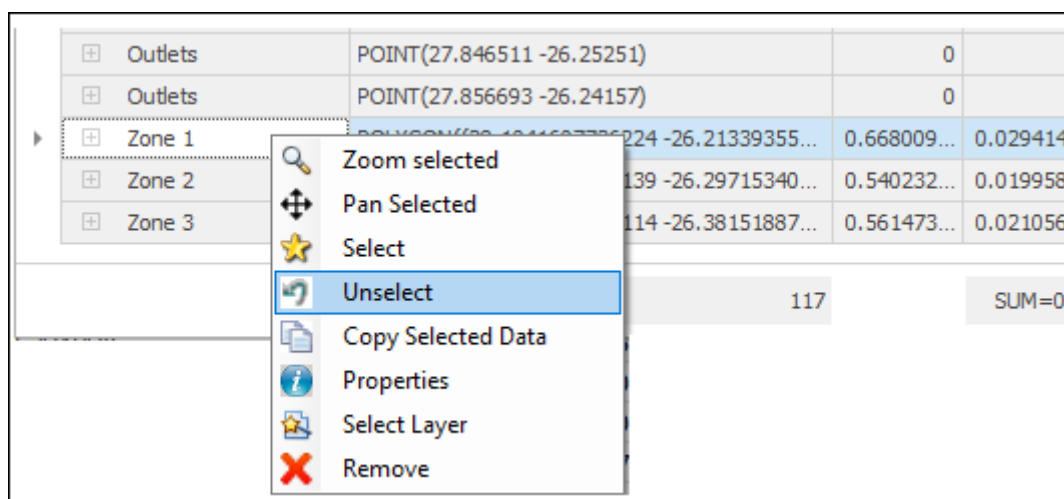
📁 Select Layer

✕ Remove

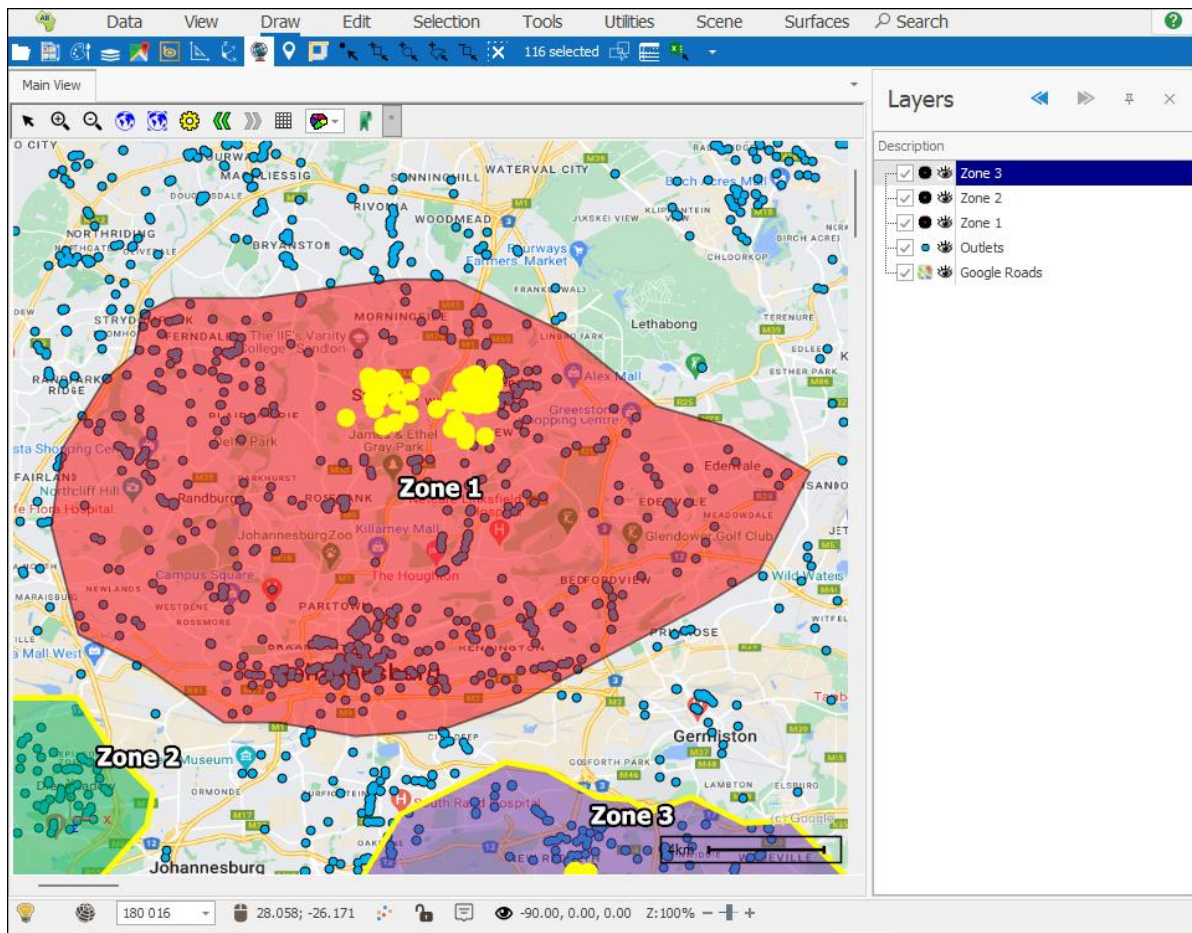
Selection Tab User Guide



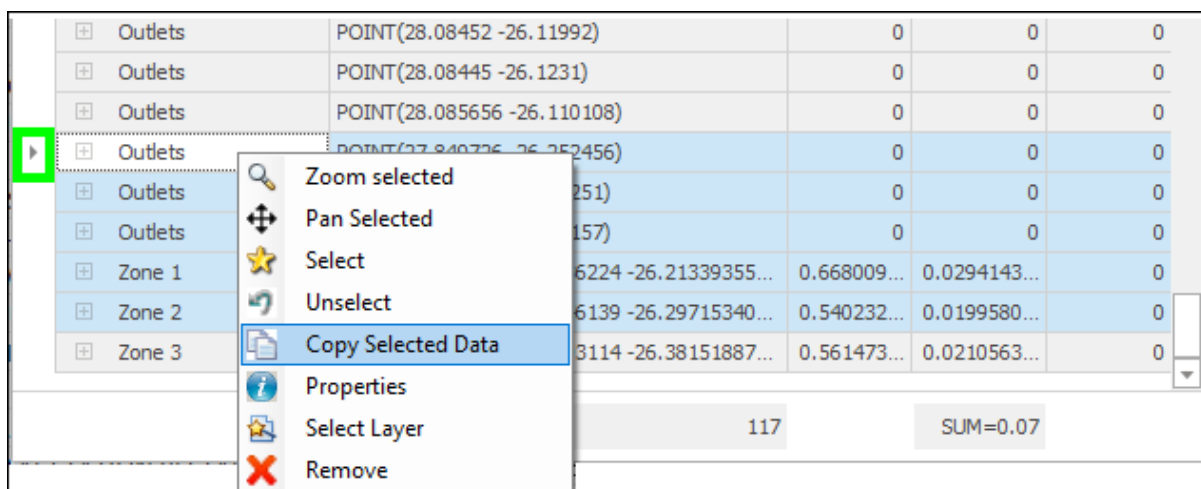
Elements can be selected and unselected by right clicking on them and clicking **Select/Unselect**:



Selection Tab User Guide

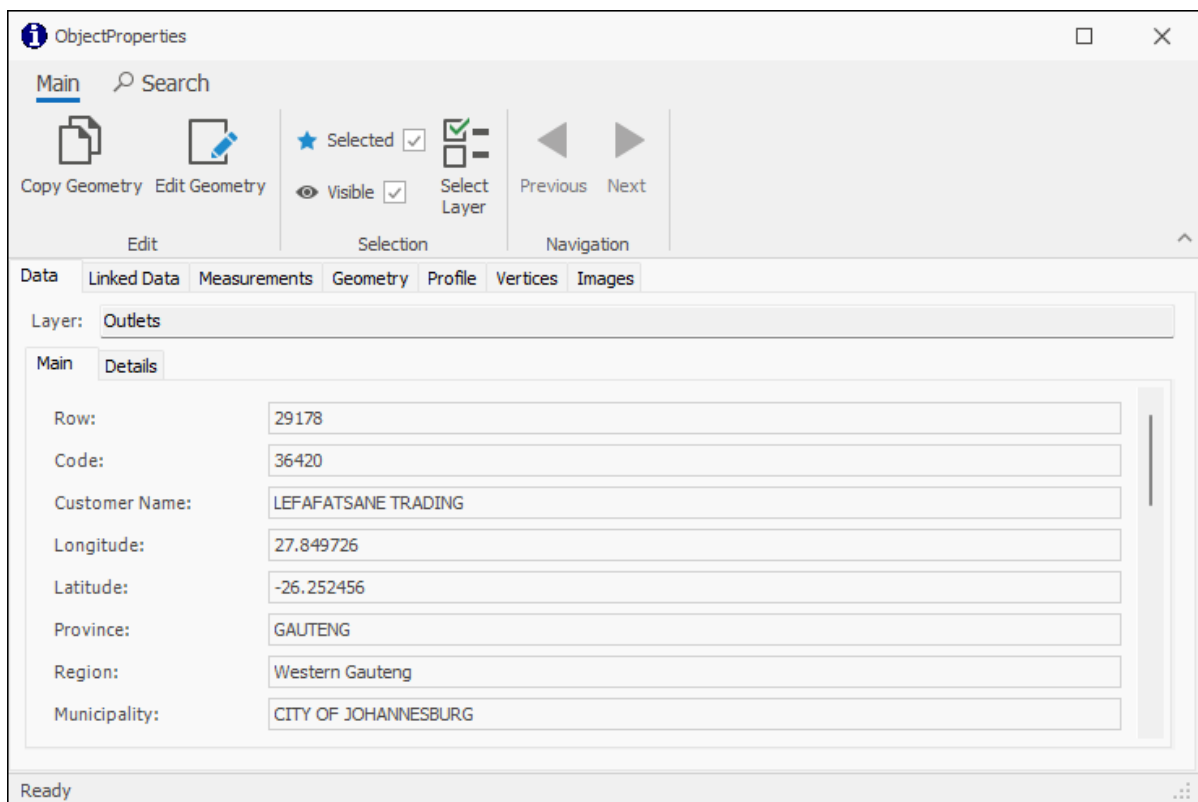
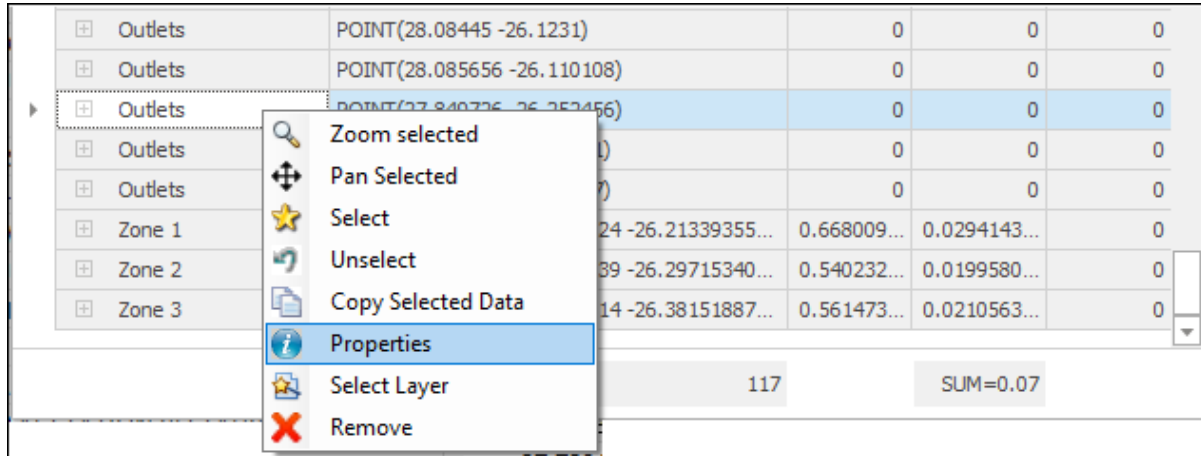


Data can be copied out from here as well by right clicking on the row you want to copy out or selecting a bunch of rows by dragging the little arrow on the left and then right clicking and selecting **Copy Selected Data**:



Selection Tab User Guide

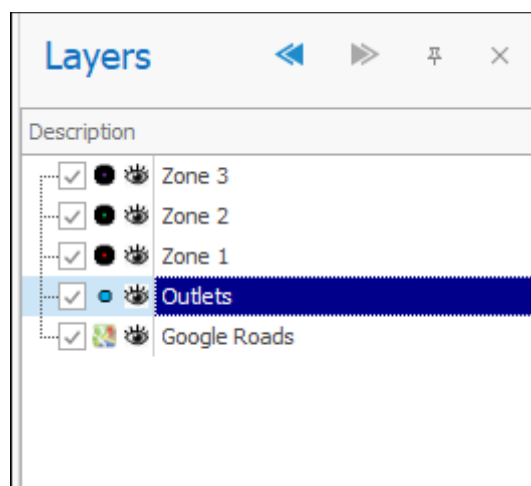
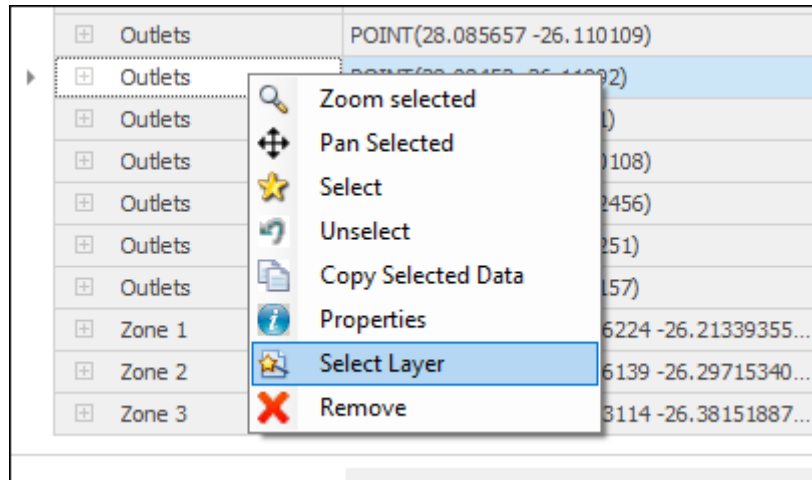
You can view the full data of an element by right clicking on it and selecting **Properties**, this will bring up the ObjectProperties window where all associated attribute information of that element is populated:



For more information on how this **ObjectProperties** window works, refer to the [Inspector Tool guide](#).

Selection Tab User Guide









To have the layer of an element highlighted in the Layers Description box, you can right click on it and click **Select Layer**:



If you want to remove an element from this Selected Objects box, you can right click on it and select **Remove**:

Selection Tab User Guide

+	Outlets	POINT(27.856693 -26...	0	0	0	
+	Outlets	POINT(27.870889 -26...	0	0	0	
▶	+	Zone 1	POLYGON((28.104160...	0.66800965993375	0.0294143421707854	0
+	Zone 2	POLYGON((27.938612...	0.540232688467281	0.0199580582153755	0	
+	Zone 3	POLYGON((28.138897...	0.561473218064528	0.0210563506821563	0	

 Zoom selected
 Pan Selected
 Select
 Unselect
 Copy Selected Data
 Properties
 Select Layer
 Remove

	+	Outlets	POINT(27.870889 -26...	0	0	0
▶	+	Zone 2	POLYGON((27.938612...	0.540232688467281	0.0199580582153755	0
	+	Zone 3	POLYGON((28.138897...	0.561473218064528	0.0210563506821563	0

You can also group by column headers by clicking on the column header and dragging it into the grouping area above, to ungroup, click and drag it back:

Selected Objects						
<div> Layer <div> Drag a column header here to group by that column </div> </div>						
Layer	Geometry	Length	Area	Volume		
<div> </div>	=	=	=	=		
+	Outlets	POINT(27.83159 -26....	0	0	0	
+	Outlets	POINT(27.8366 -26.2...	0	0	0	
+	Outlets	POINT(27.846511 -26...	0	0	0	
+	Outlets	POINT(27.837 -26.24...	0	0	0	
+	Outlets	POINT(27.8417 -26.2...	0	0	0	
+	Outlets	POINT(27.8418 -26.2...	0	0	0	
+	Outlets	POINT(27.837 -26.248)	0	0	0	
+	Outlets	POINT(27.84102 -26....	0	0	0	
+	Outlets	POINT(27.84116 -26....	0	0	0	
+	Outlets	POINT(27.837159 -26...	0	0	0	
+	Outlets	POINT(27.856693 -26...	0	0	0	
+	Outlets	POINT(27.870889 -26...	0	0	0	
▶	+	Zone 2	POLYGON((27.938612...	0.540232688467281	0.0199580582153755	0
+	Zone 3	POLYGON((28.138897...	0.561473218064528	0.0210563506821563	0	

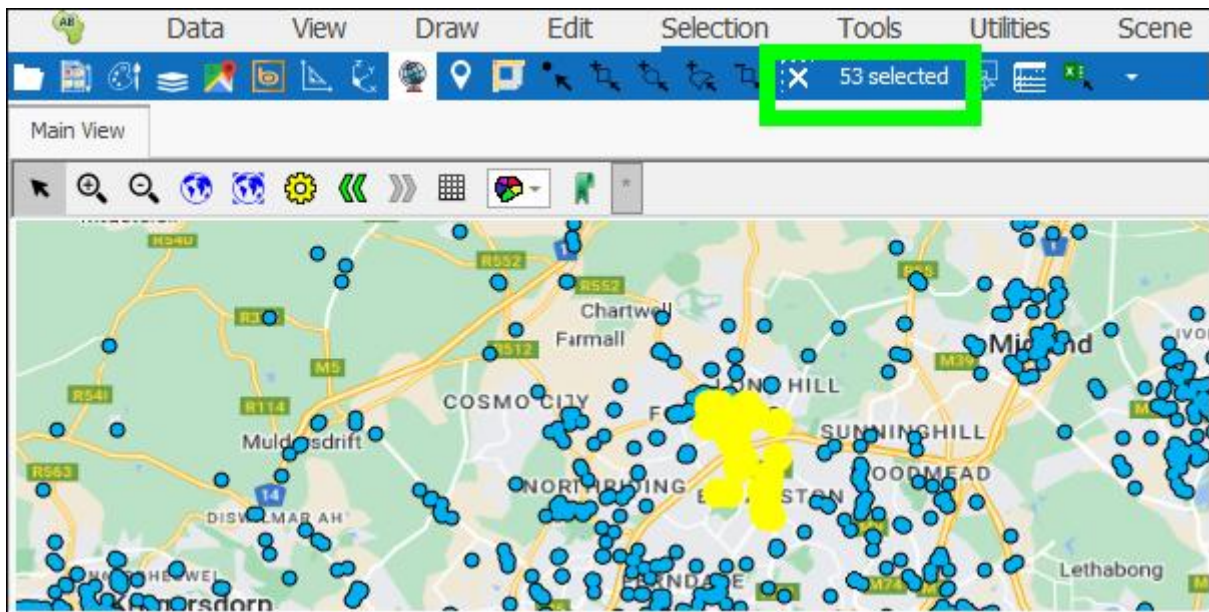
164

Selected Objects ×				
Layer ▲ 🔍				
	Layer ▲	Geometry	Length	Area
▼	ARC	=	=	=
▶	<div> > Layer: Outlets </div>			
	<div> > Layer: Zone 2 </div>			
	<div> > Layer: Zone 3 </div>			

For more data on all the things you can do in this Selected Objects grid, refer to the [Layer Data Grid Guide](#) whose principles apply to all data grids in our products.

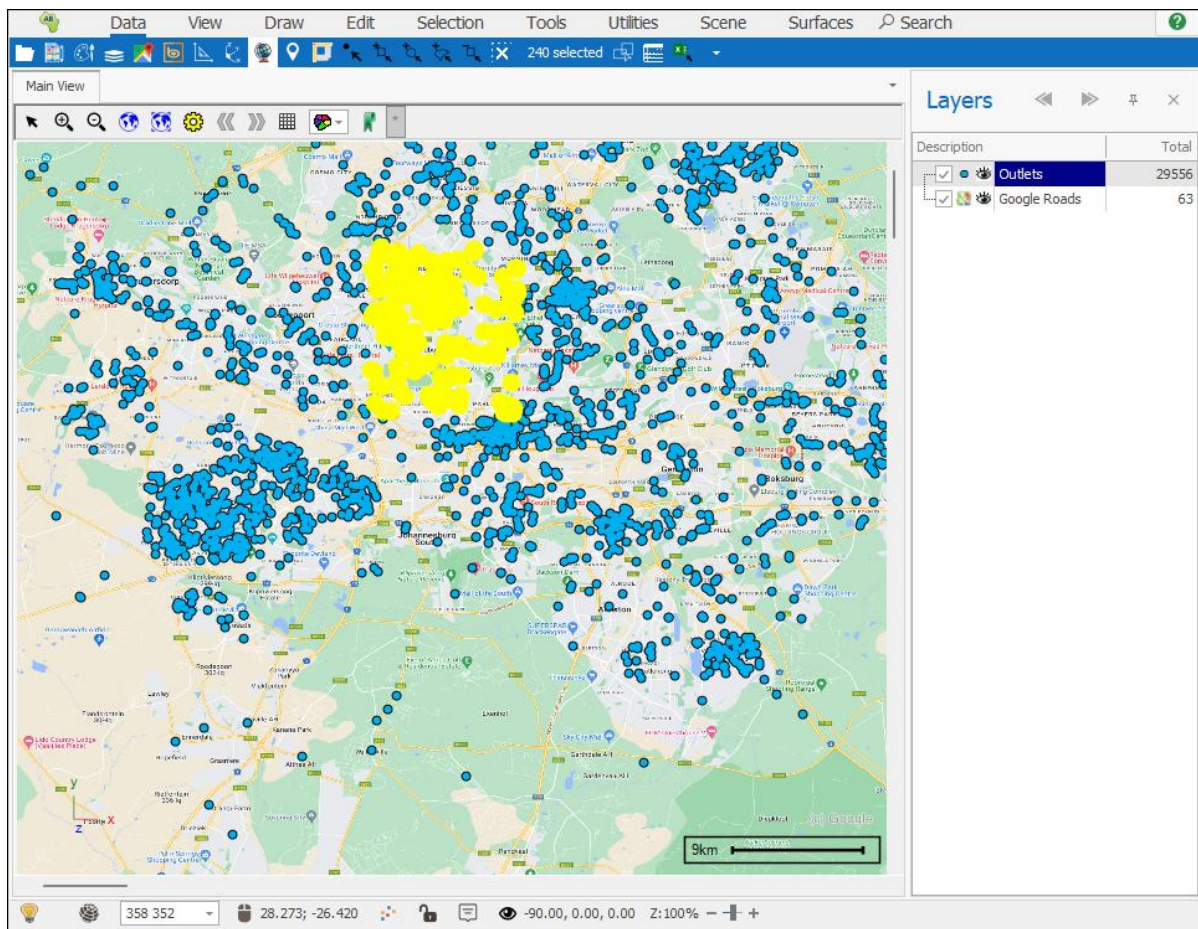
The Selected Objects window can also be accessed from the Quick Access Toolbar by clicking on the number of selected items box:

Selection Tab User Guide

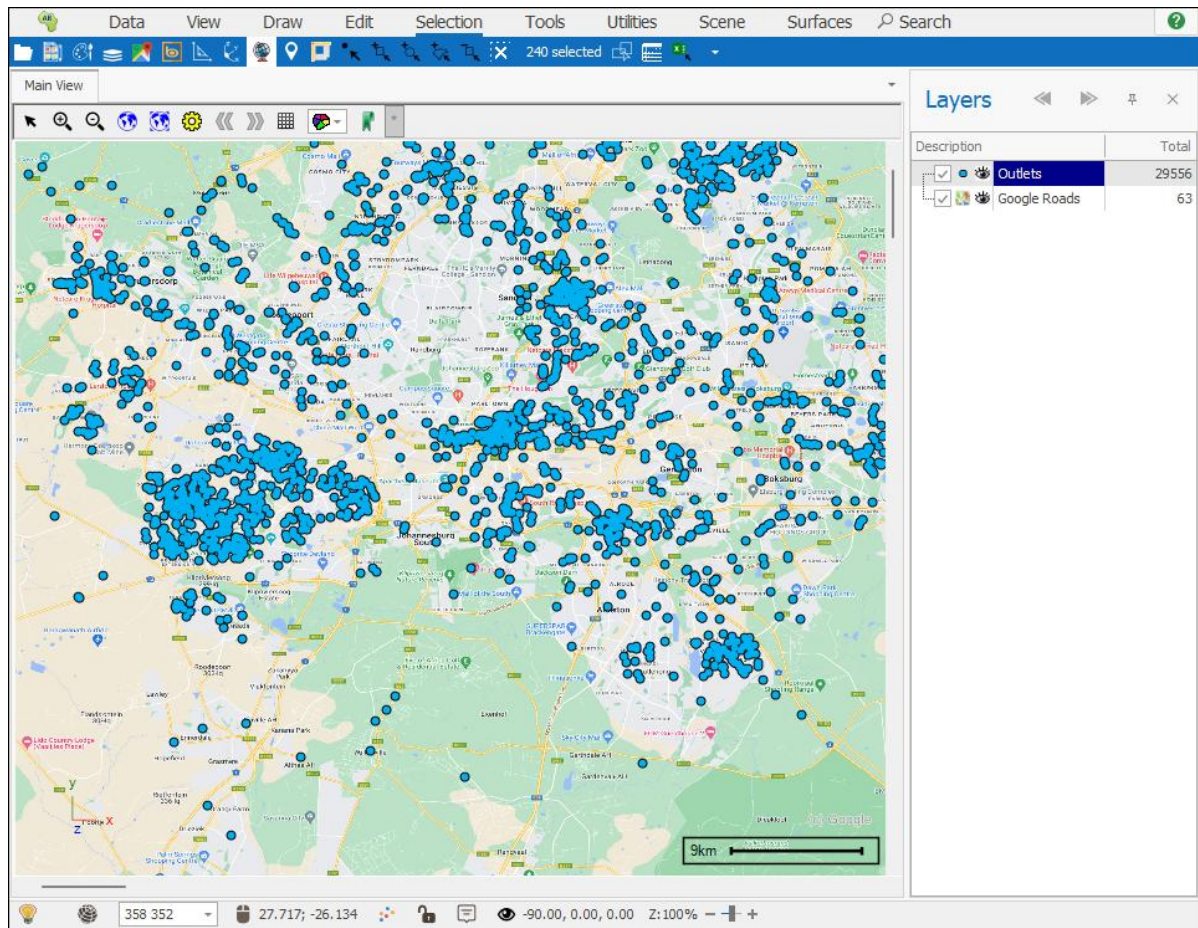
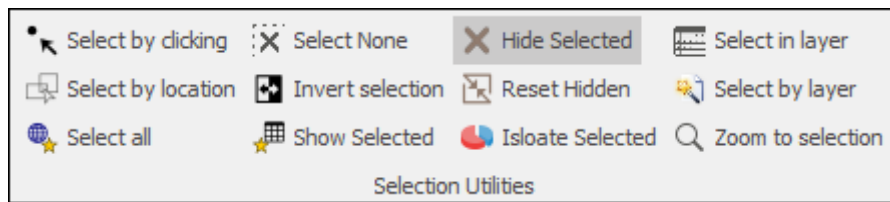


Hide Selected

Hide Selected will hide all selected elements in your scene:

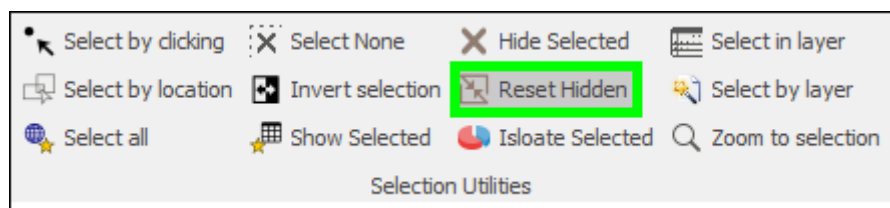


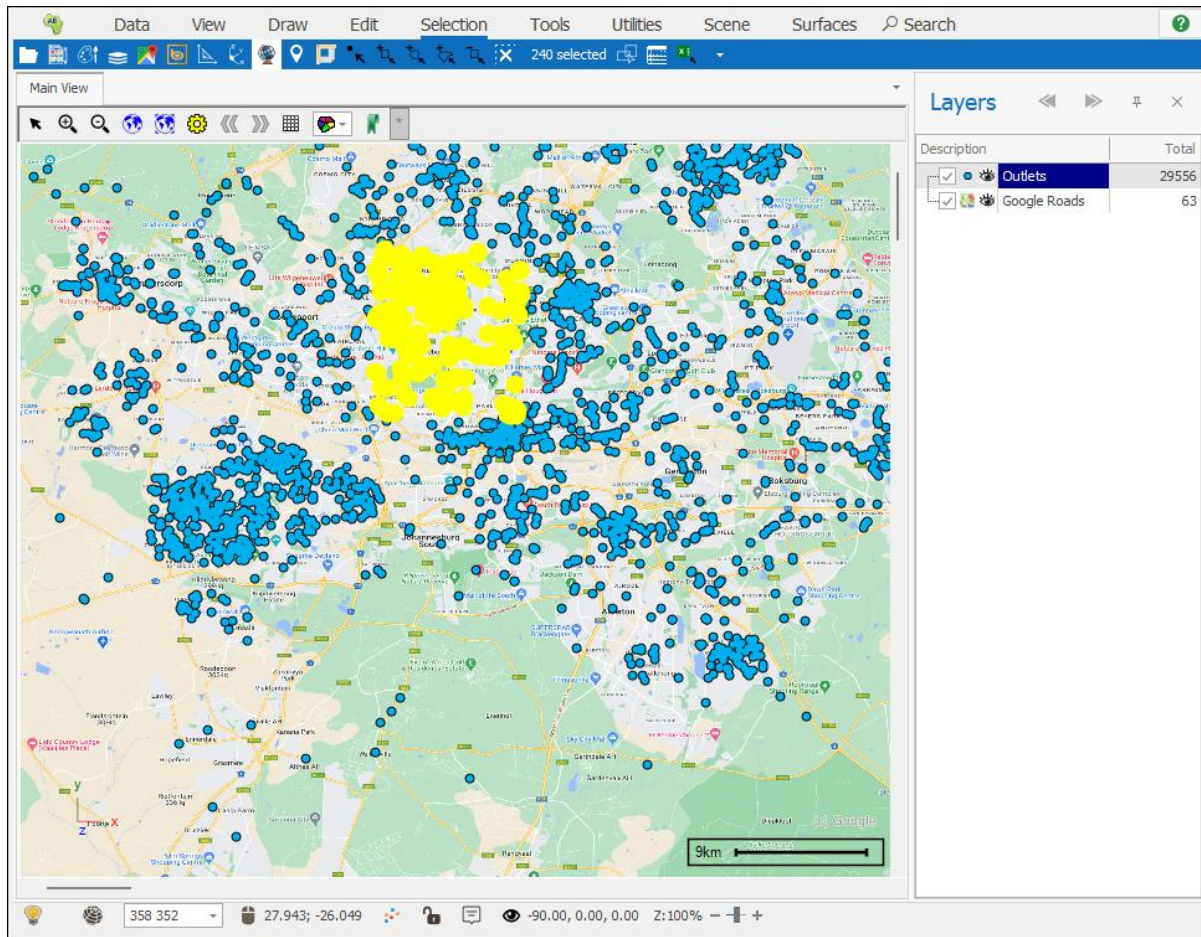
Selection Tab User Guide



Reset Hidden

Reset Hidden will put the hidden items back in the scene:

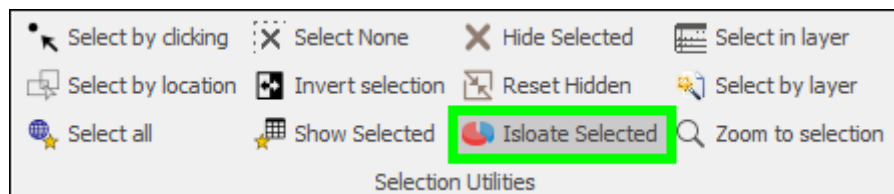
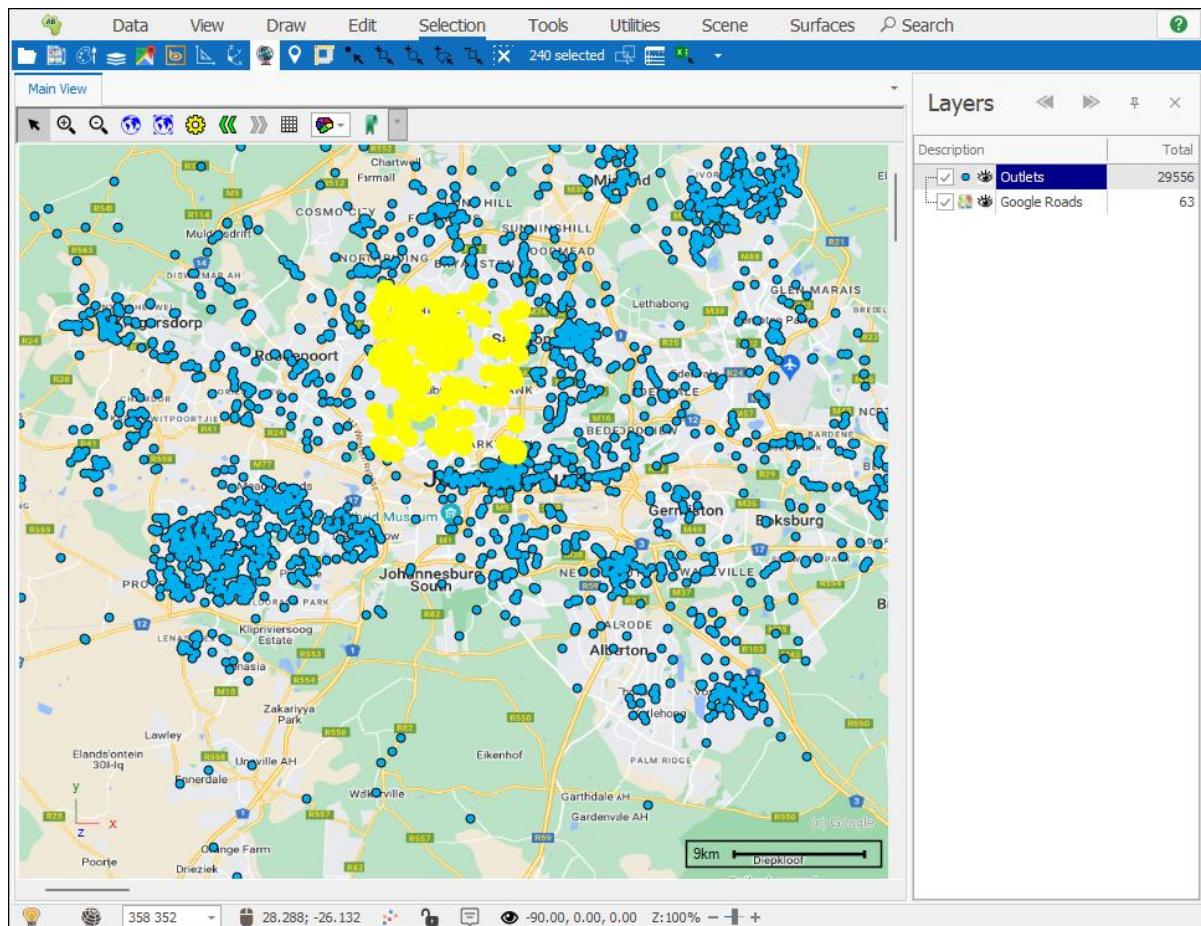




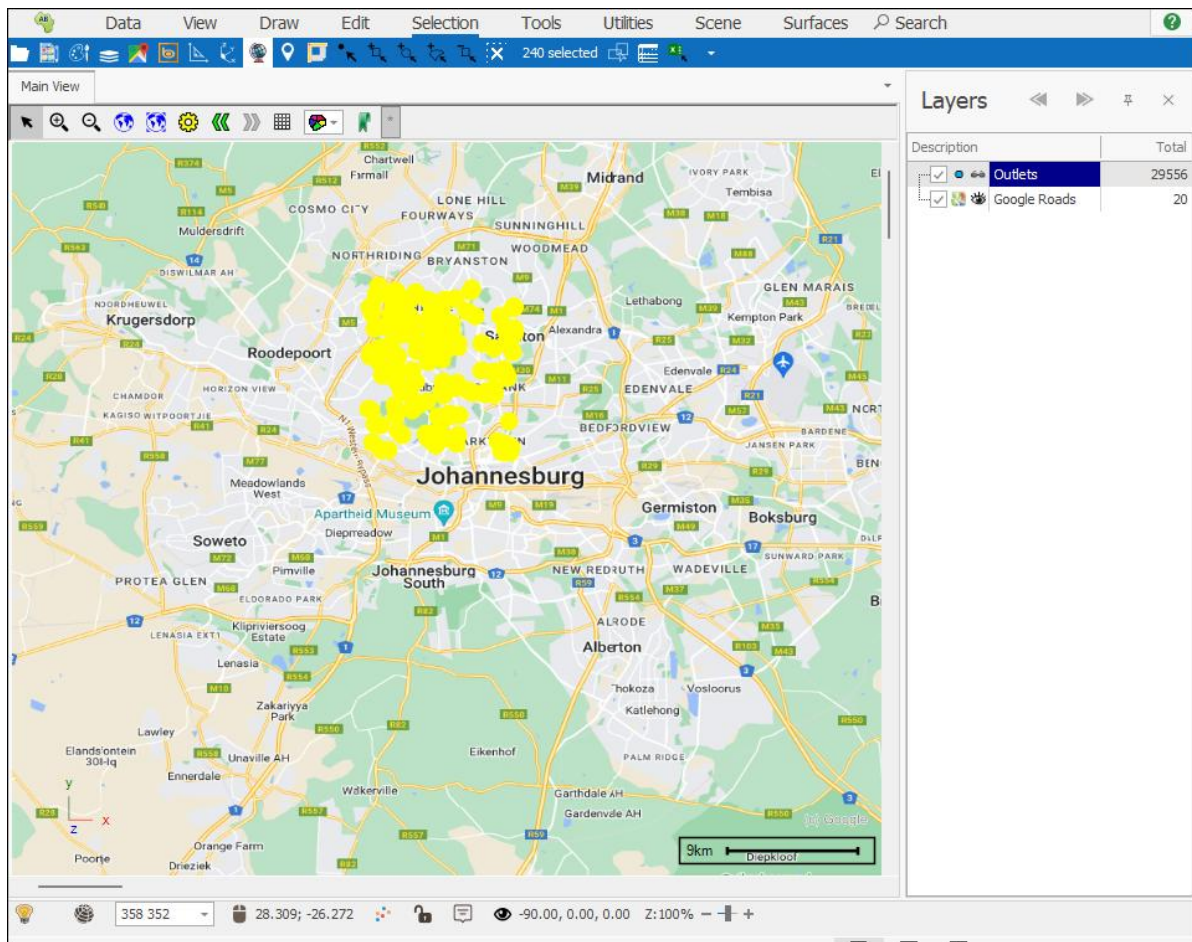
Isolate Selected

Isolate Selected will filter out your elements so that only selected elements show on the scene:

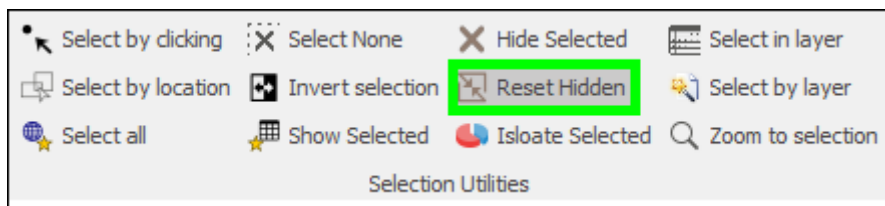
Selection Tab User Guide



Selection Tab User Guide



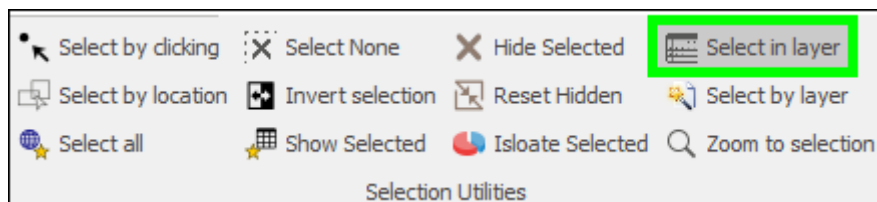
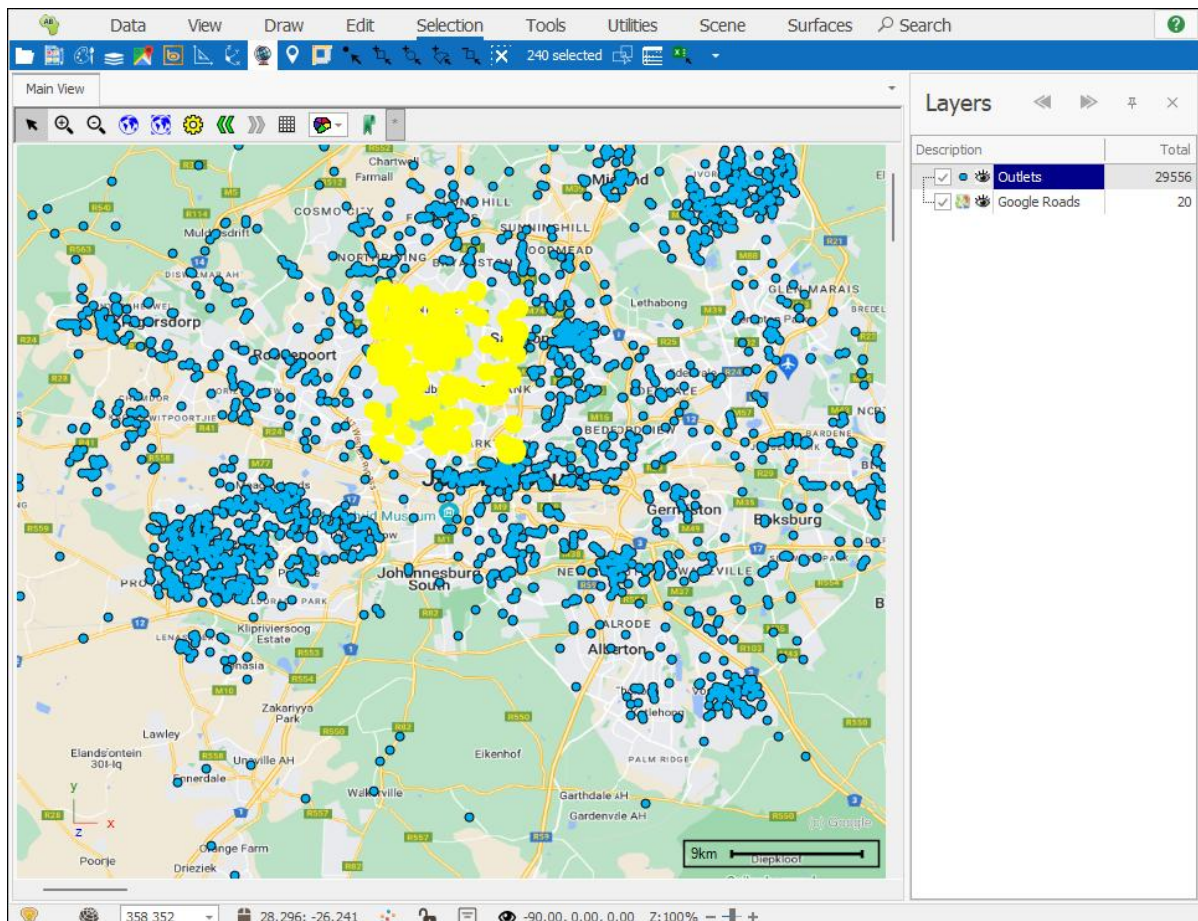
To put back the other elements, click **Reset Hidden**:



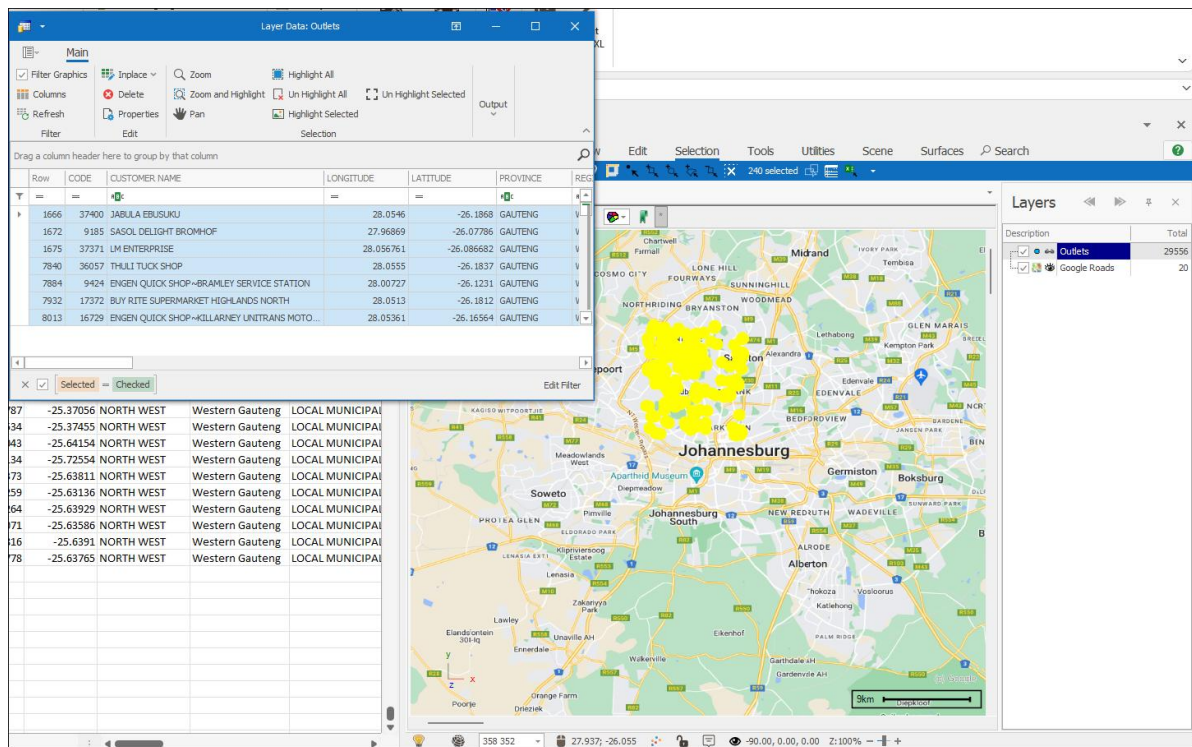
Select in Layer

Select in Layer will select and filter out the highlighted elements in the Layer Data Grid:

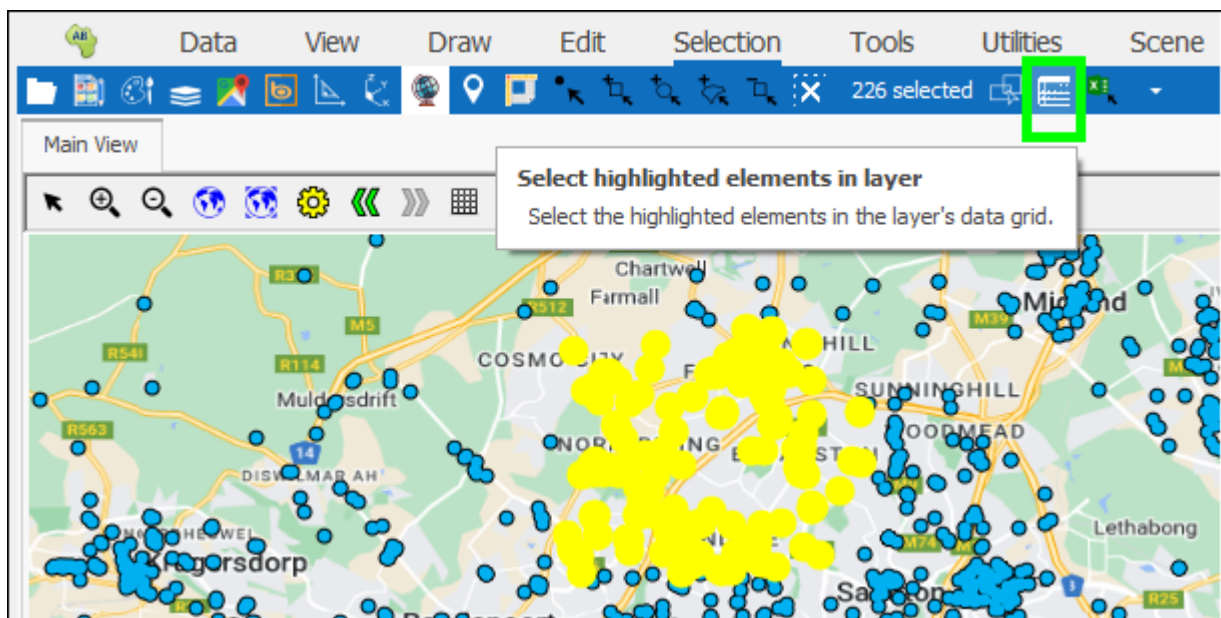
Selection Tab User Guide



Selection Tab User Guide

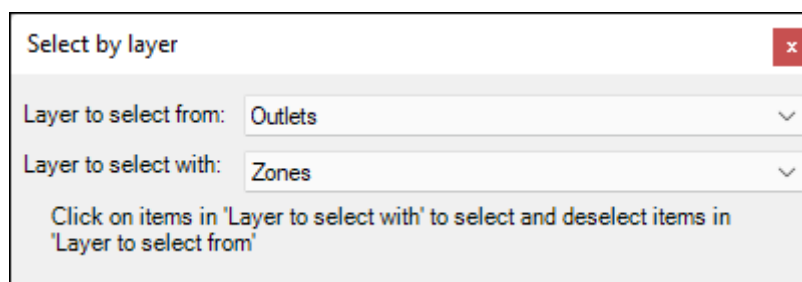
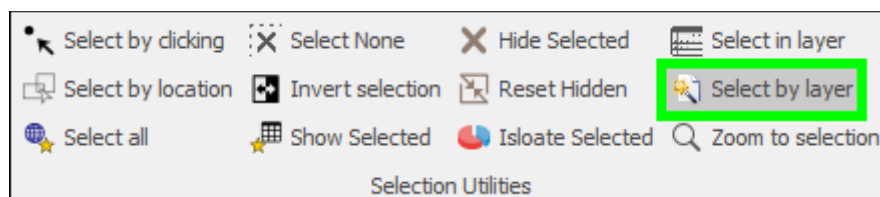
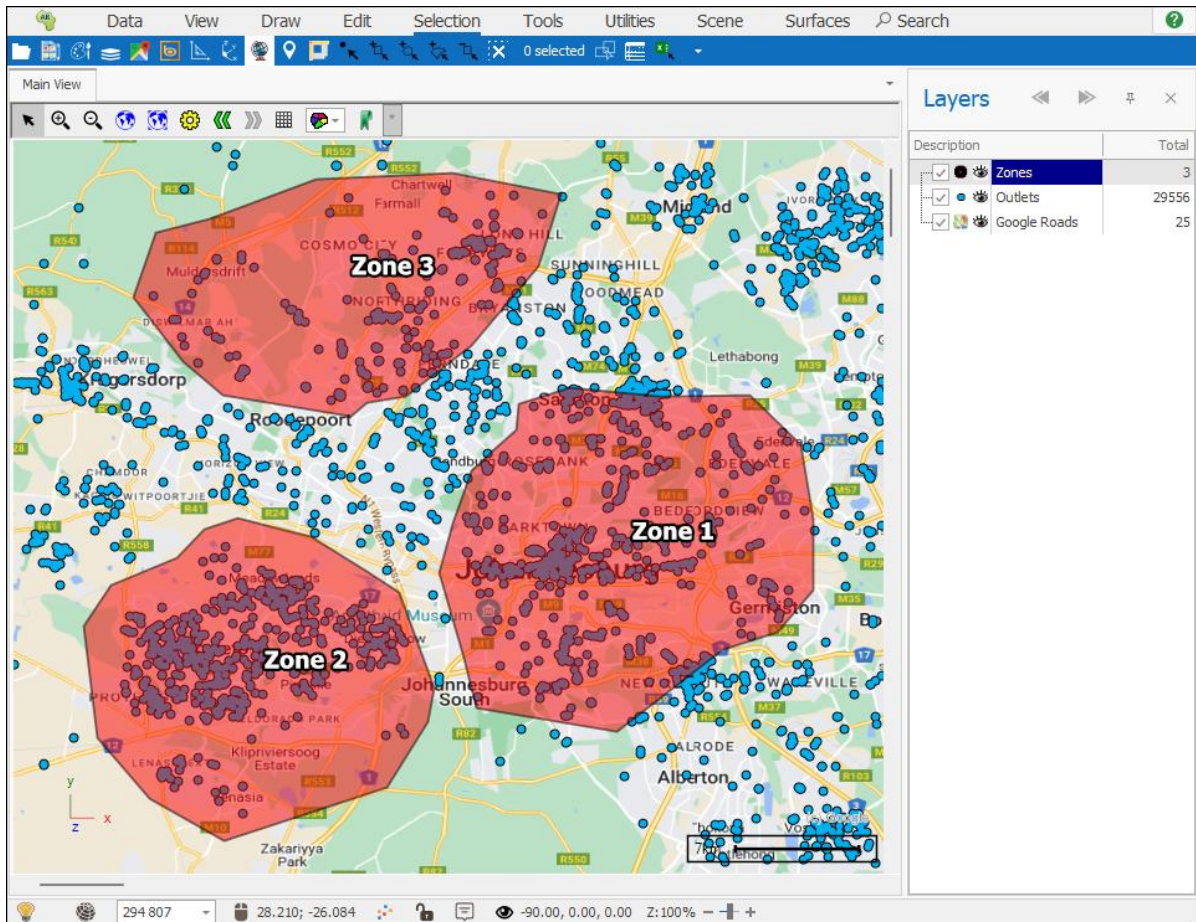


This tool is also accessible from the Quick Access Toolbar:



Select by Layer

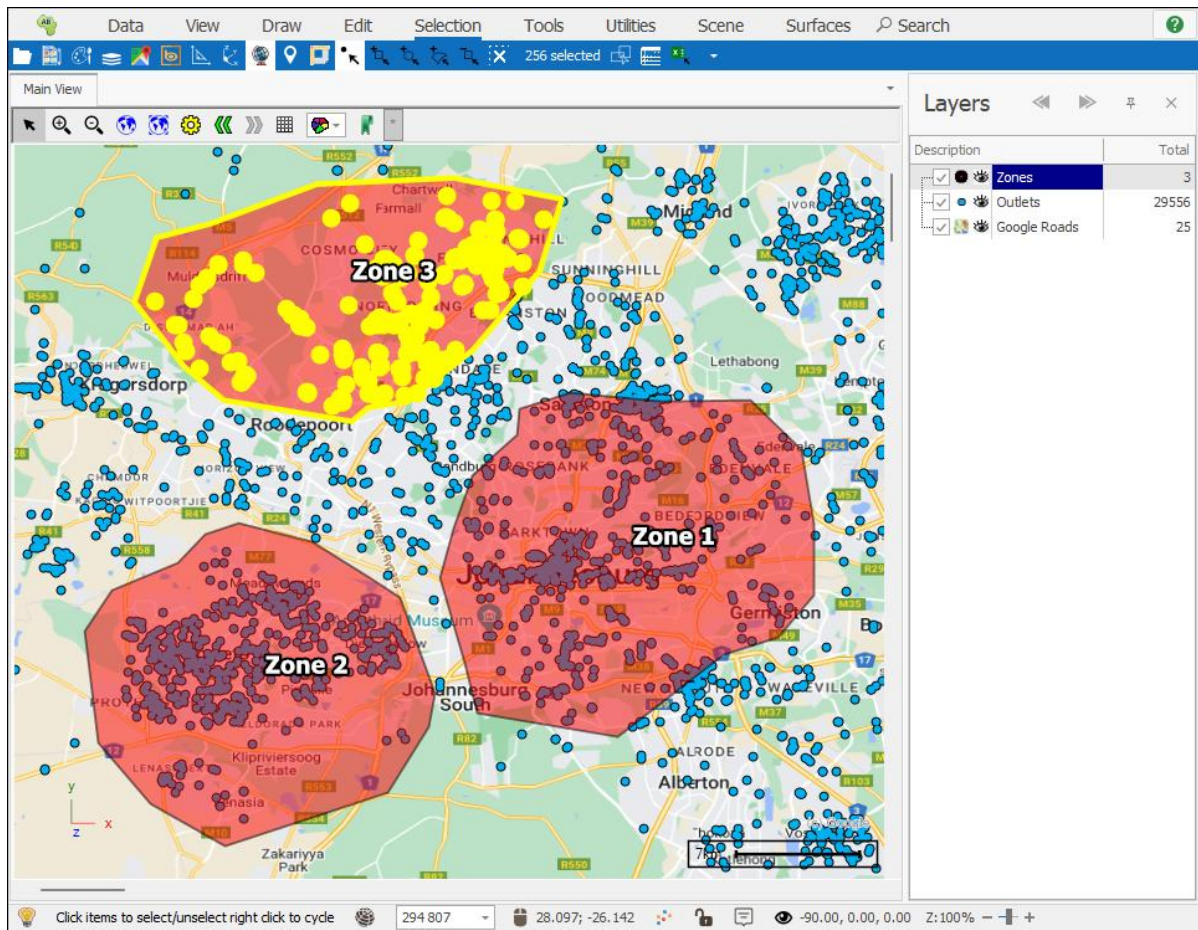
Select by layer allows you to select elements in a target layer by selecting elements in another layer such as a polygon layer; all elements of the target layer contained within the polygon you select will also be selected:



Selection Tab User Guide

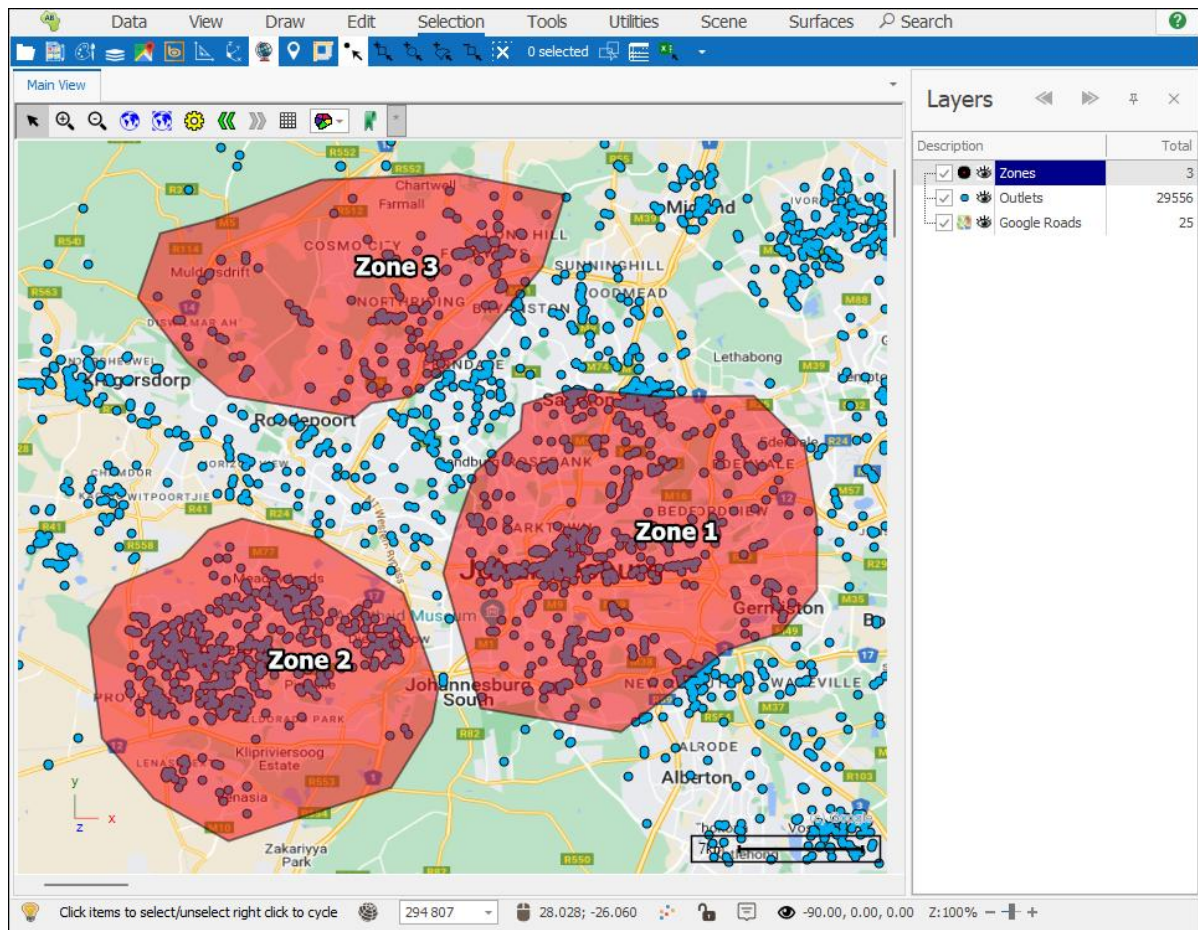
In the dialogue that comes up choose the target layer by **Layer to select from** and the polygon layer by **Layer to select with**.

Now, in your scene select a polygon using one of the selection tools and all elements from your target layer contained in that polygon will be selected as well:



As you unselect polygons, so will the contained elements be unselected:

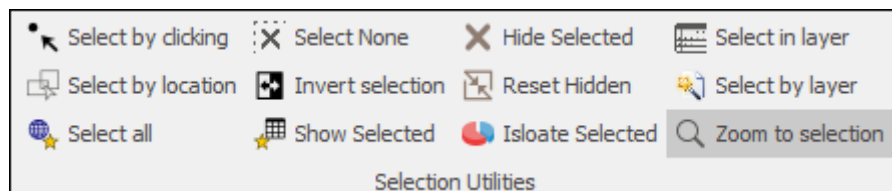
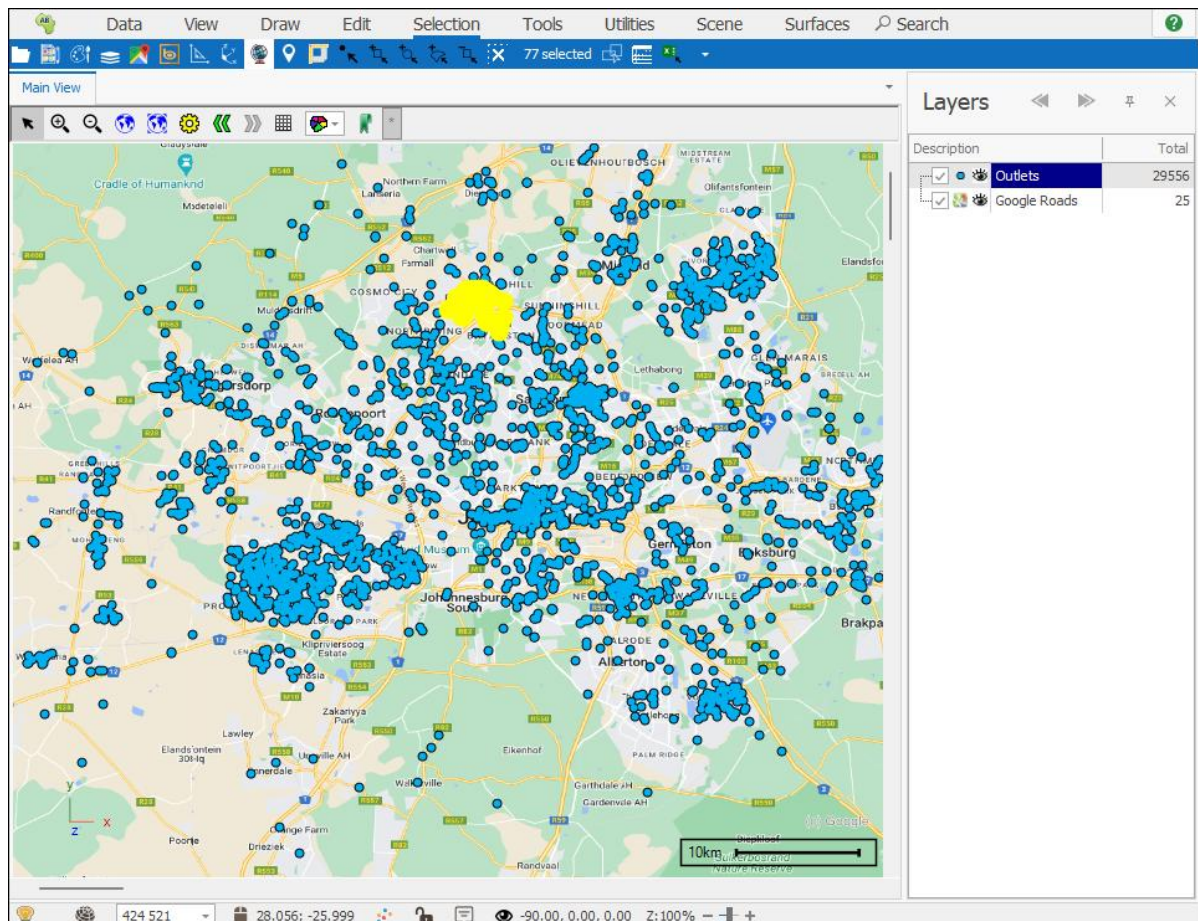
Selection Tab User Guide

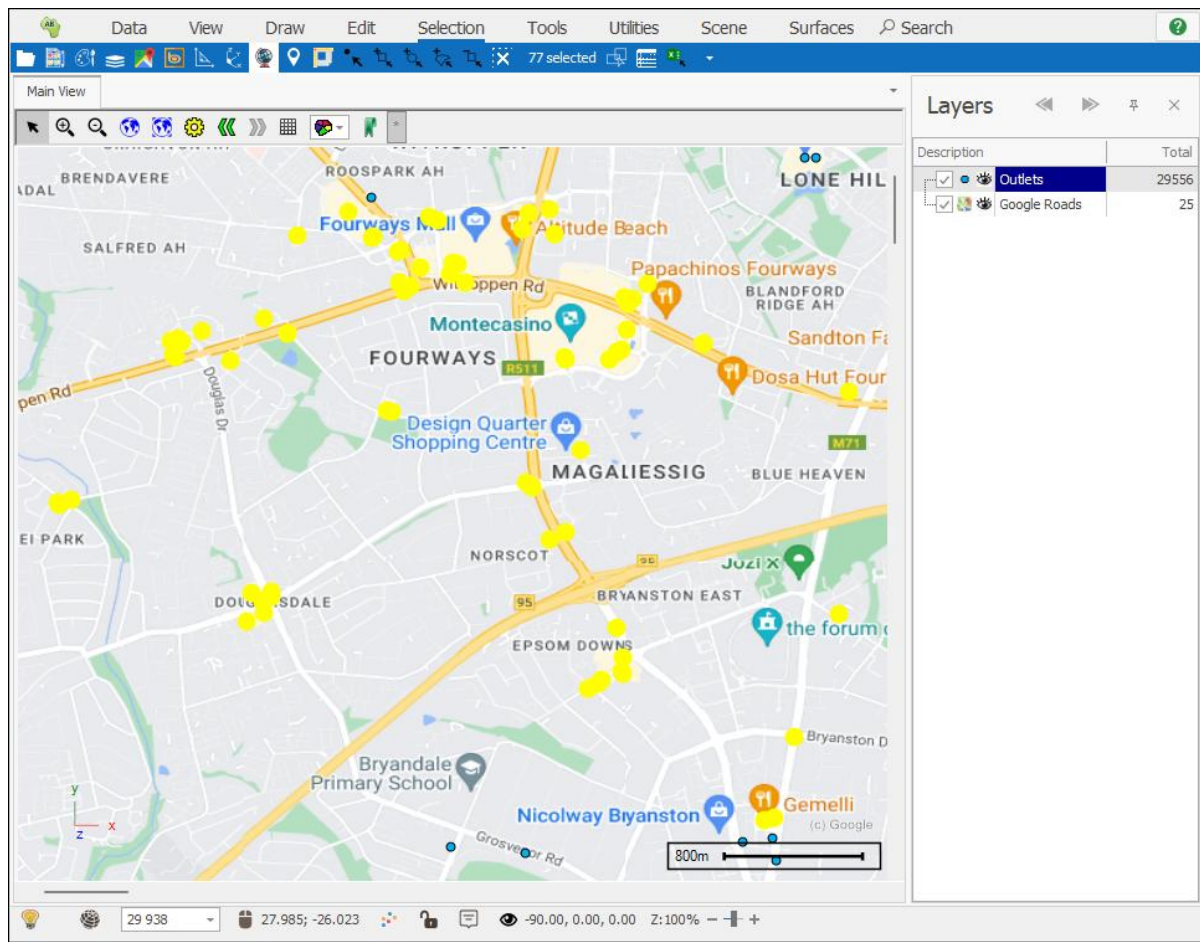


Zoom to selection

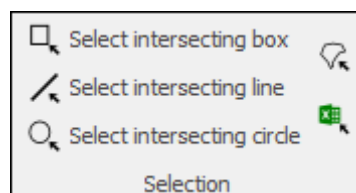
To zoom to the currently selected items you can click **Zoom to selection**:

Selection Tab User Guide





Selection

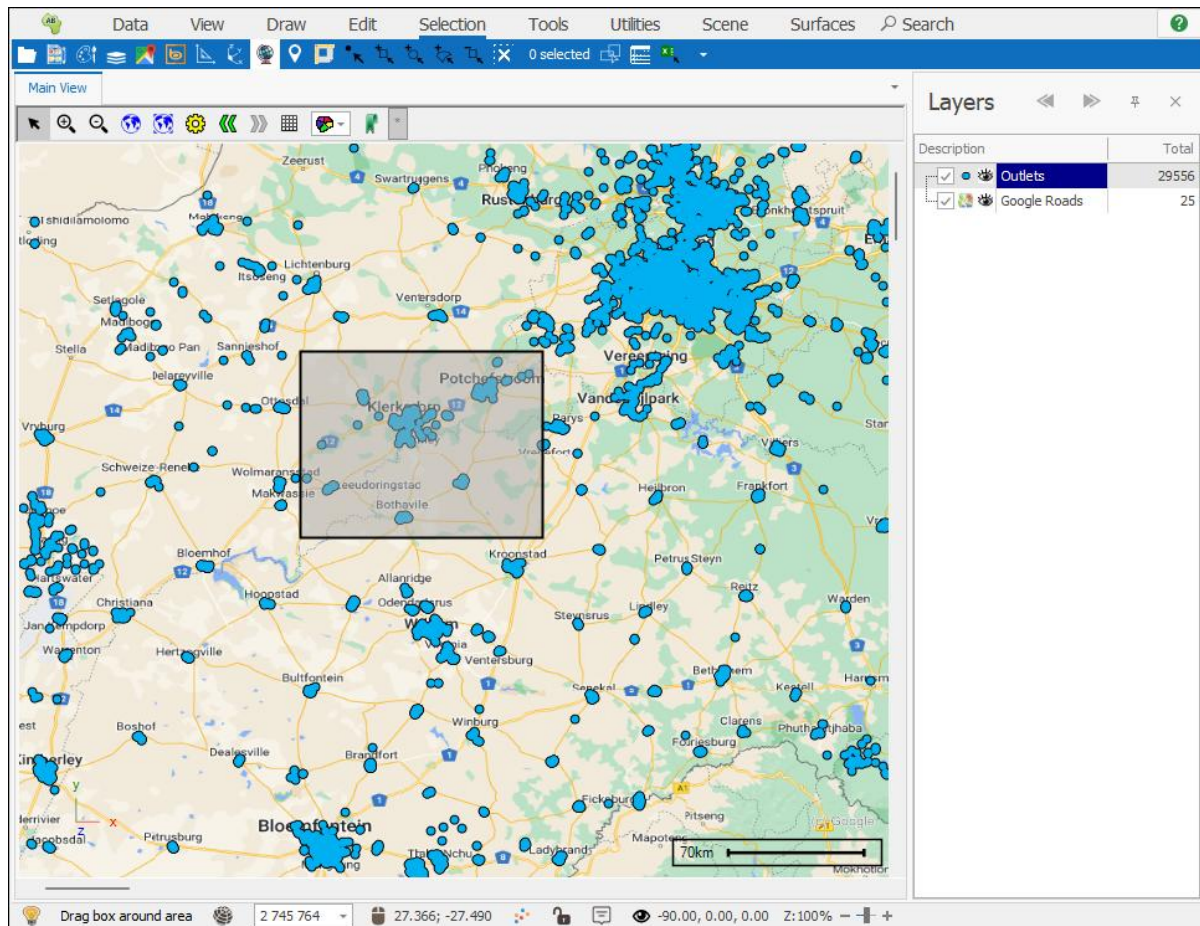
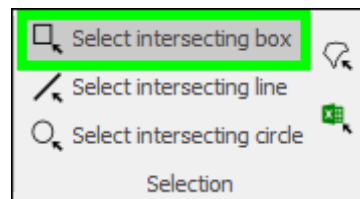


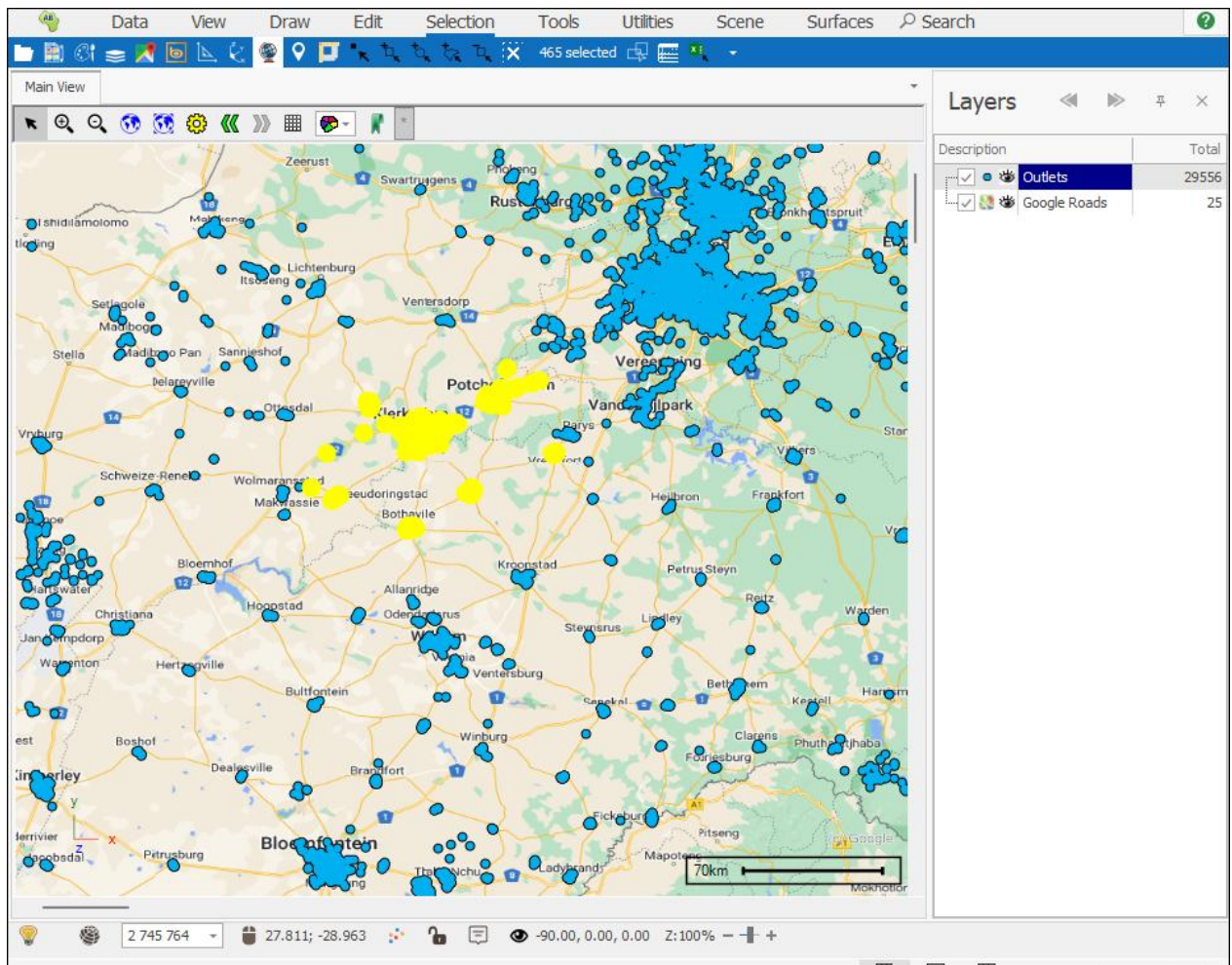
In the **Selection** section of the tab there are a number of different tools you can use to select elements in your scene. These tools will set the selection to whatever you select and unselect anything else you may have selected before.

Select intersecting box

Select intersecting box allows you to select elements by drawing a box around them. Click in the top left of the area you intend to select then drag the box around:

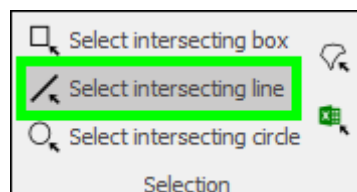
Selection Tab User Guide



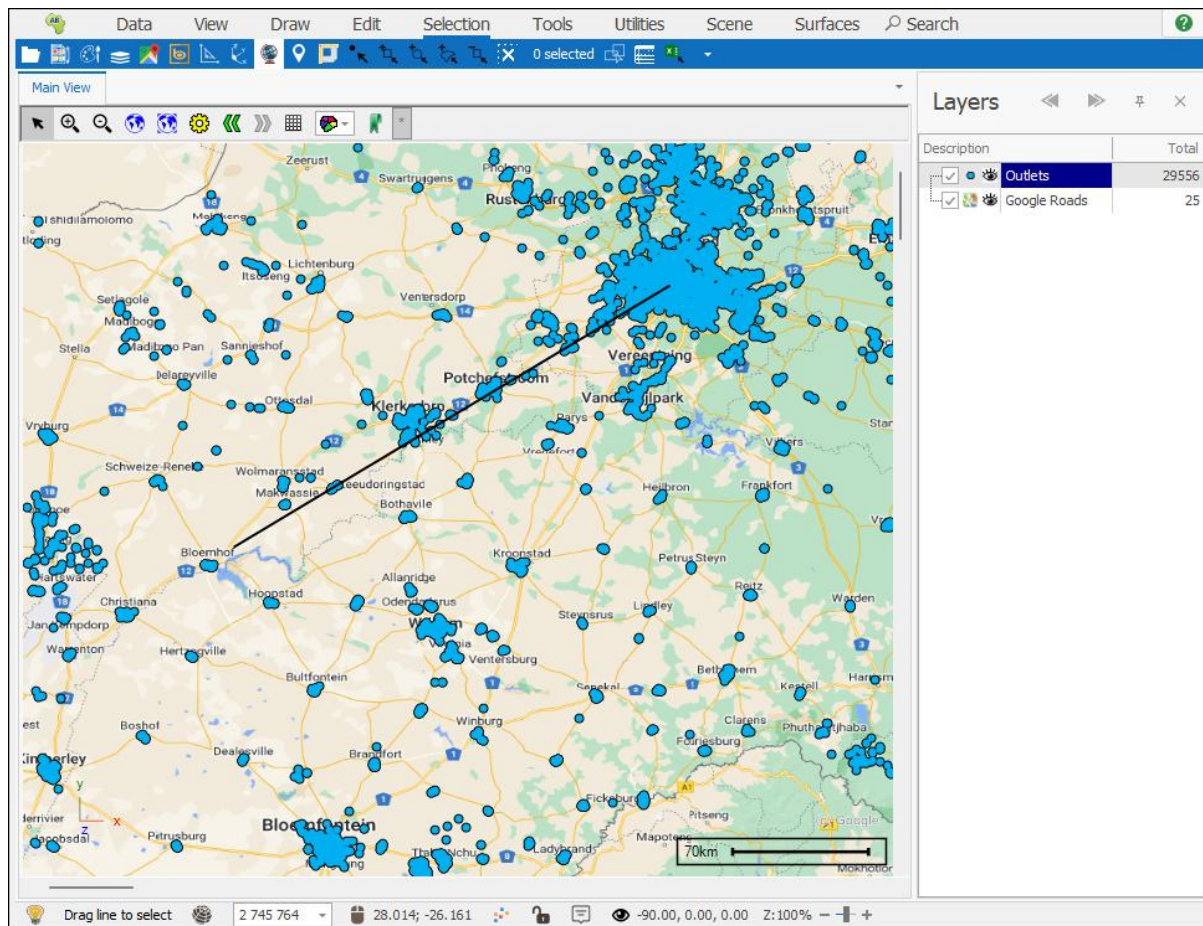


Select intersecting line

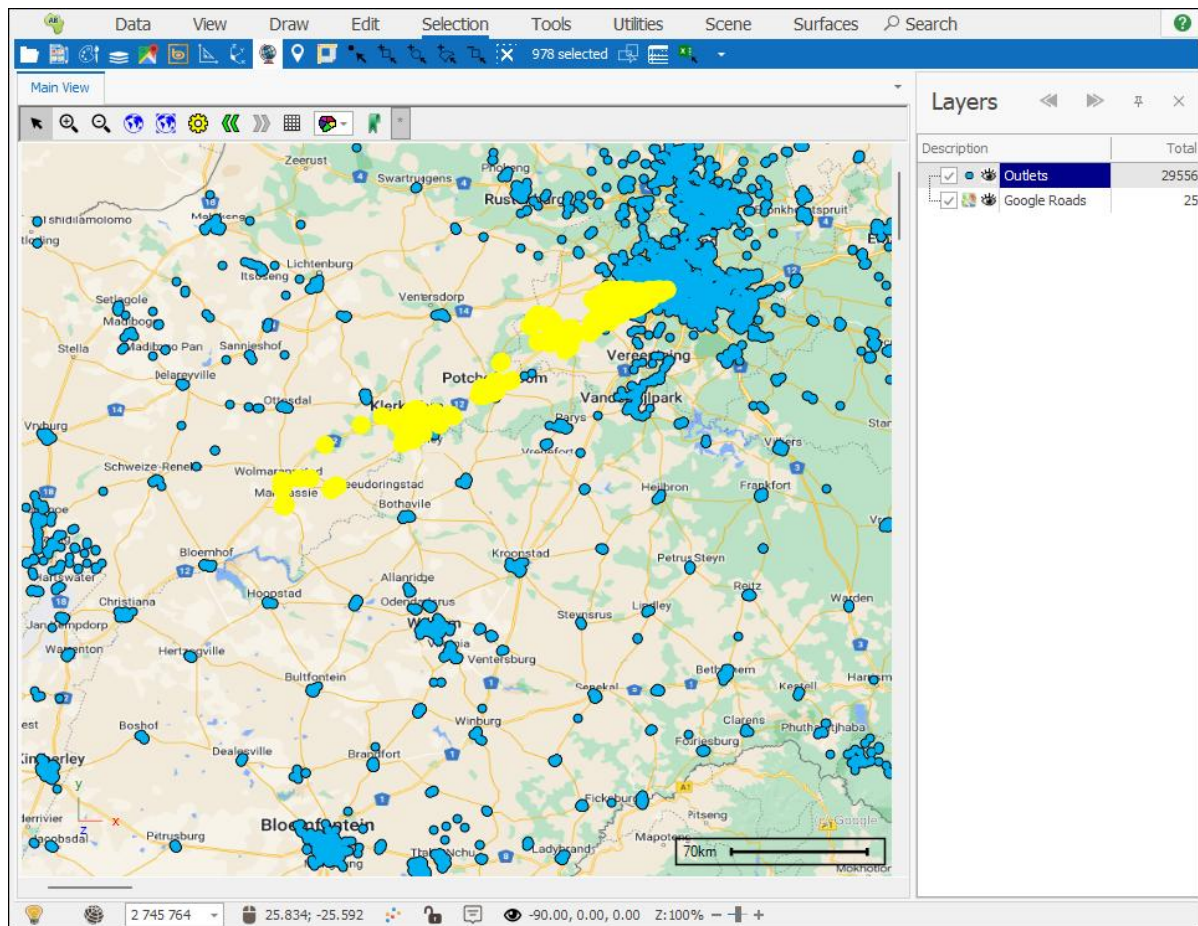
Select intersecting line allows you to select elements by drawing a line across them; click in your scene and drag your line across the area you want to select:



Selection Tab User Guide

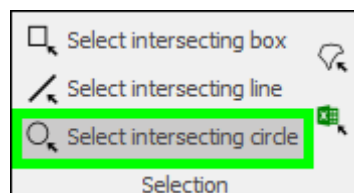


Selection Tab User Guide

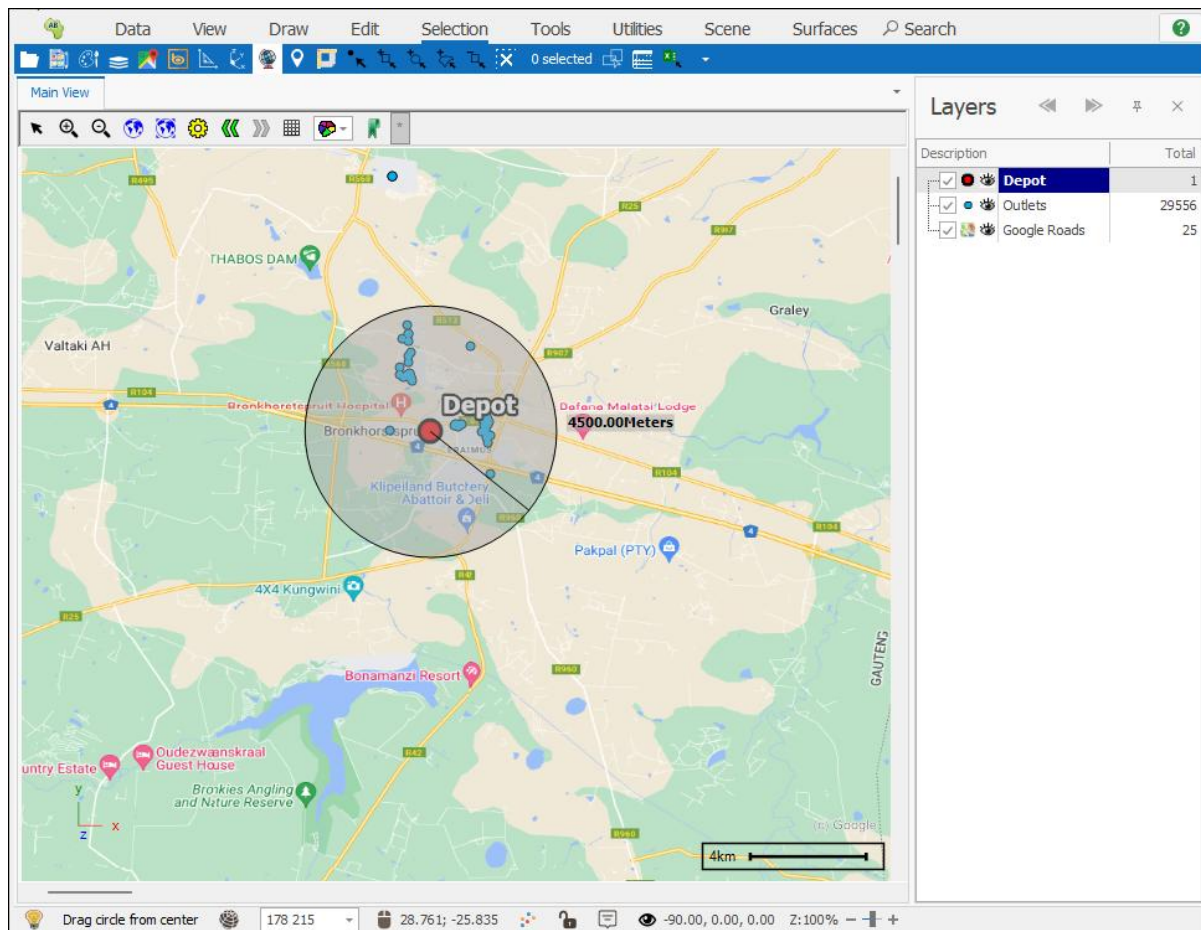


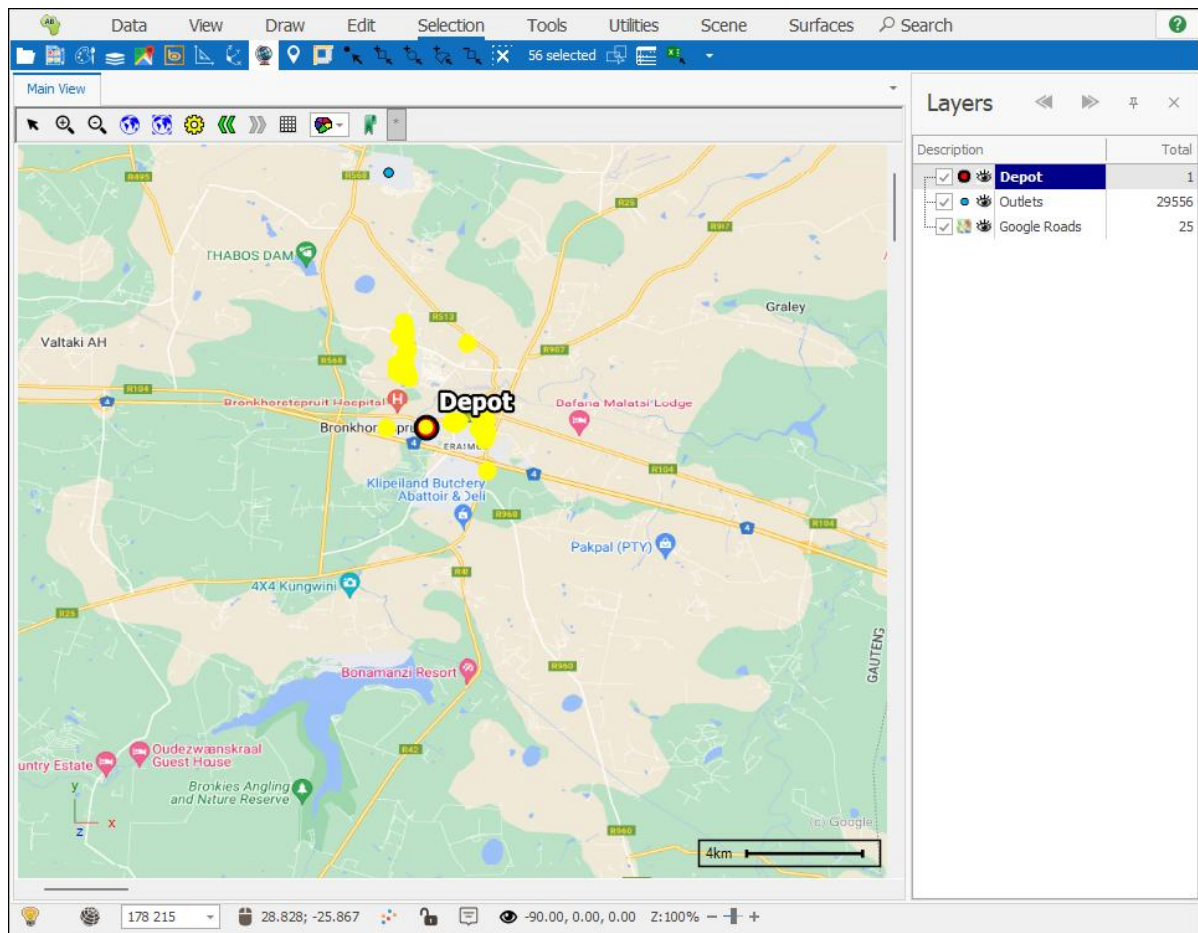
Select intersecting circle

Select intersecting circle allows you to draw a circle to select elements; this allows you to select elements within a certain radius from some point:



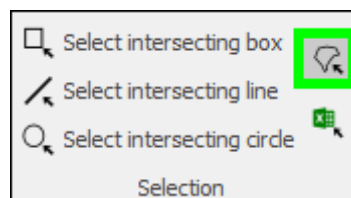
Selection Tab User Guide



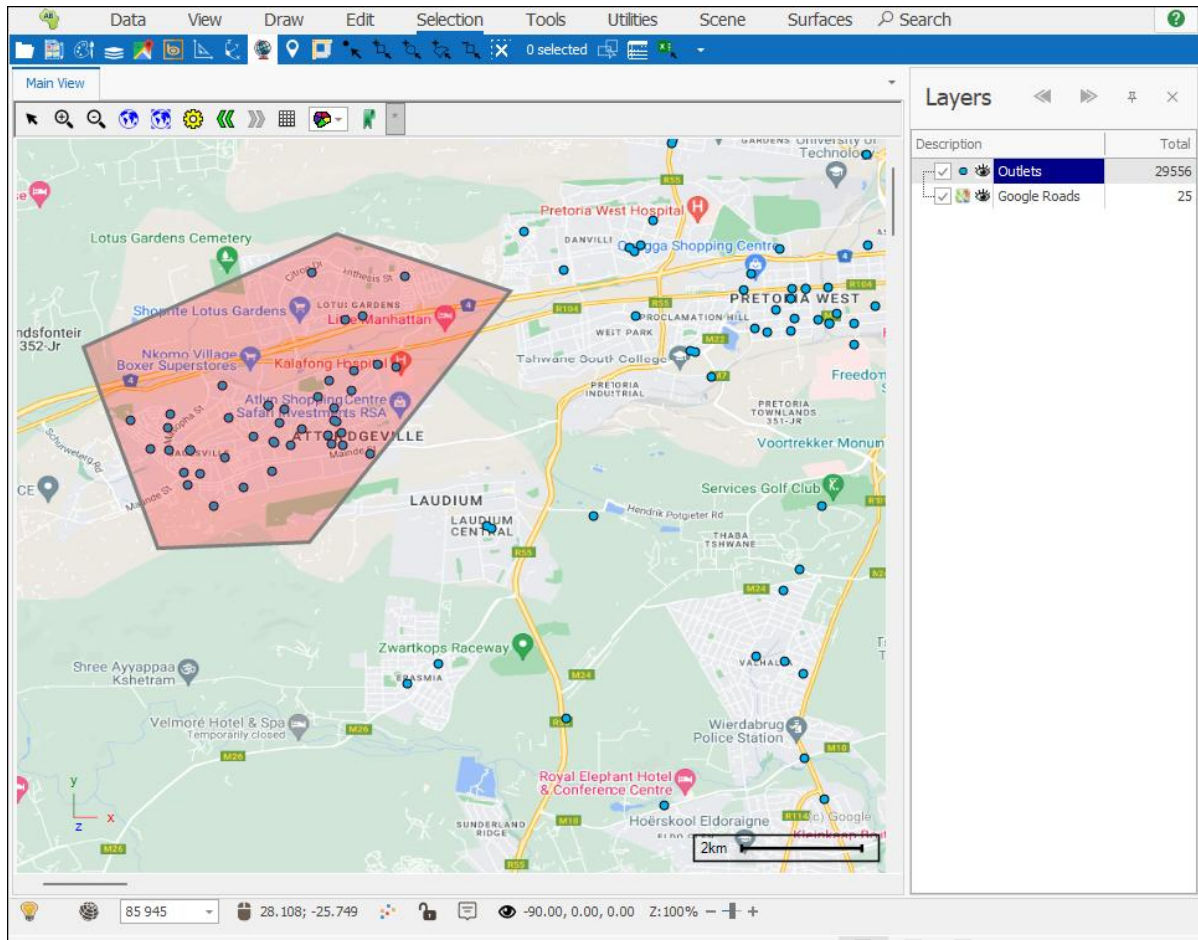


Select intersecting polygon

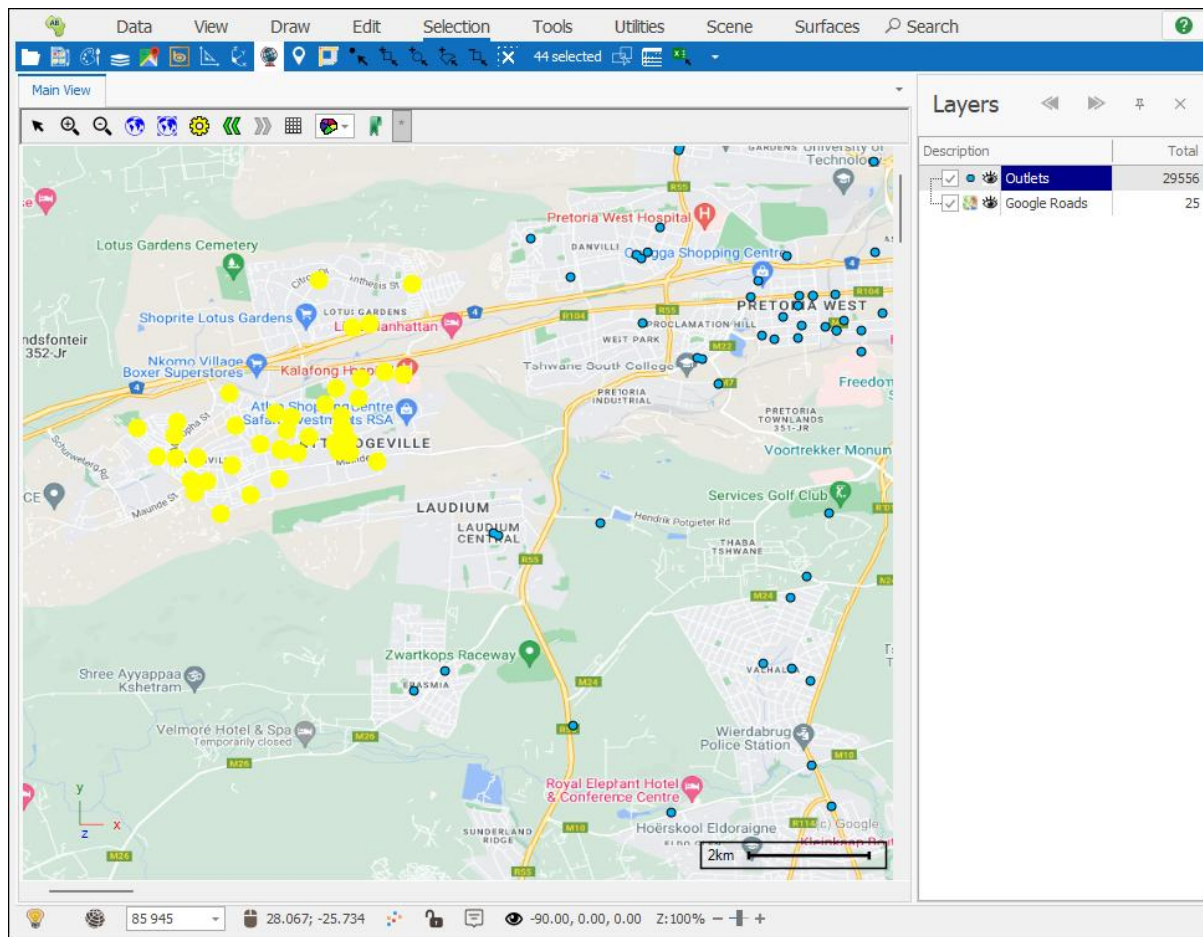
The **Select intersecting polygon** tool allows you to select elements in the scene by drawing a polygon around them; click to draw each vertex of the polygon then double click to finish:



Selection Tab User Guide



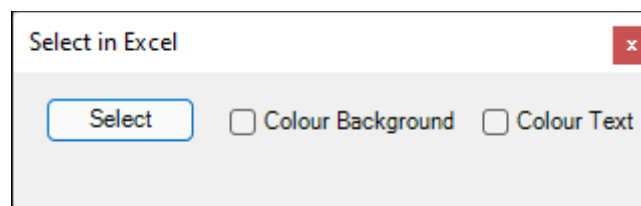
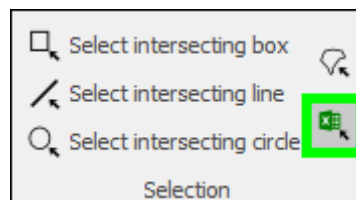
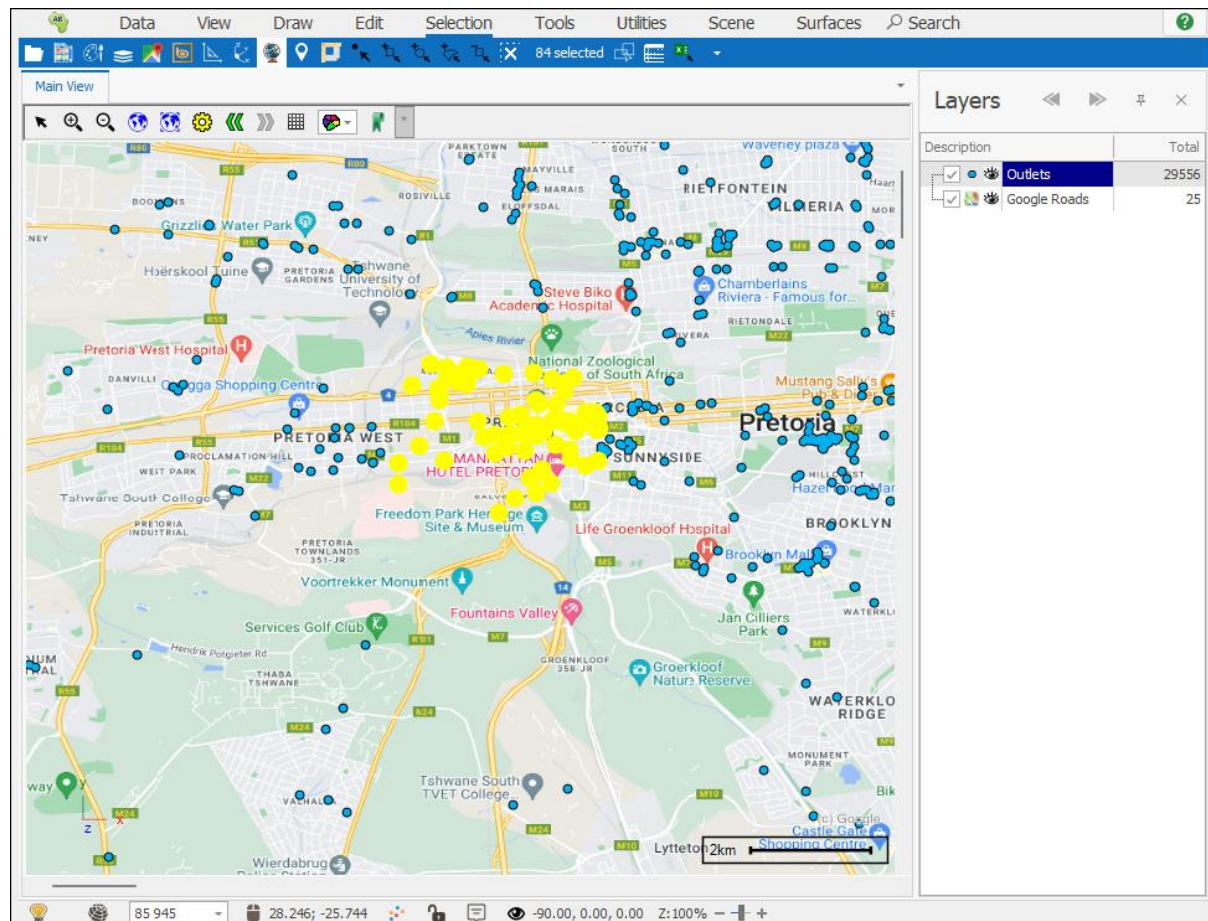
Selection Tab User Guide



Select selected elements in Excel

The **Select selected elements in Excel** button allows you to select the rows in Excel that correspond to the selected elements in the scene. This is for SpatialXL only:

Selection Tab User Guide



You can choose to have the rows selected in the following ways: **Colour Background**, **Colour Text** or not selecting any of these and the rows will just be highlighted for you. I will choose Colour Background for this example and choose the colour to be red:

Selection Tab User Guide

Select in Excel

Select

☒ Colour Background
 ☐ Colour Text

Colour: 240, 0, 0
☐ Use Clear Colour

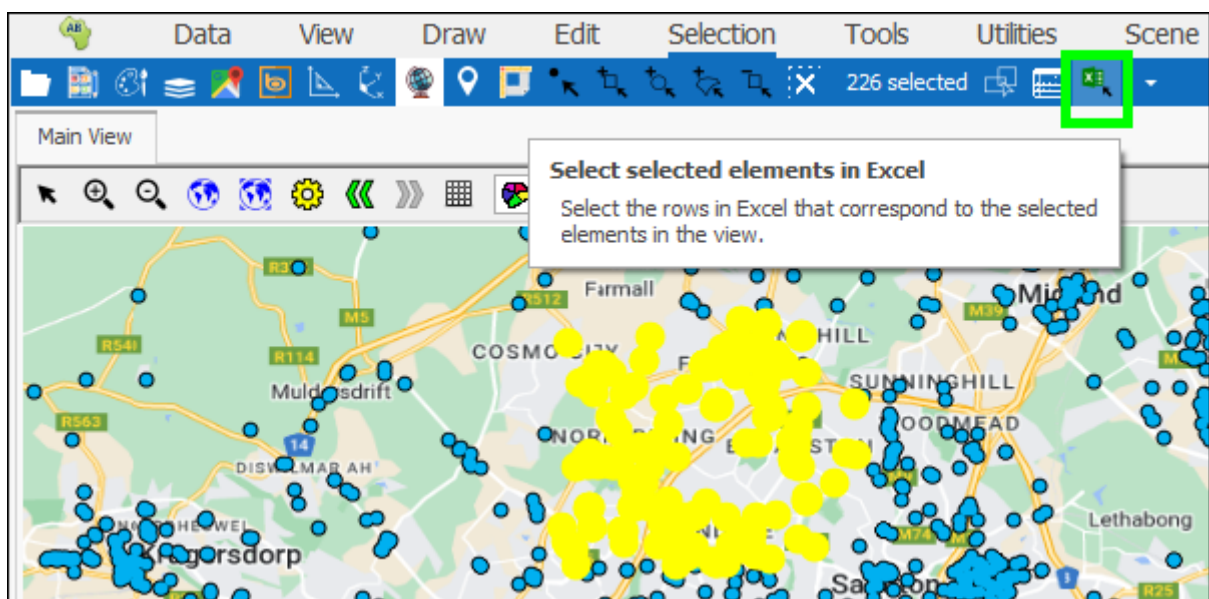
Then click **Select** and the rows are coloured for you. You can then filter by colour to see all these rows:

	A	B	C	D	E	F	
1	CODE	CUSTOMER NAME	LONGITUDE	LATITUDE	PROVINCE	REGION	MUNICIPALITY
24260	24121	TSIBISI FRUIT AND VEGETABLES	28.178162	-25.74734	GAUTENG	Western Gauteng	CITY OF TSHWANE
24261	29052	NEW COURT TAKE AWAYS	28.183642	-25.749511	GAUTENG	Western Gauteng	CITY OF TSHWANE
24262	7310	AD LIQUOR STORE	28.148785	-25.718877	GAUTENG	Western Gauteng	CITY OF TSHWANE
24263	19053	OTTOS CAFE	28.15694	-25.722367	GAUTENG	Western Gauteng	CITY OF TSHWANE
24264	15248	THE GOLDEN SPOON CAFE	28.15869	-25.722399	GAUTENG	Western Gauteng	CITY OF TSHWANE
24265	10426	HUSSE MET LANG ORE PLAASWINKEL	28.167249	-25.726418	GAUTENG	Western Gauteng	CITY OF TSHWANE
24266	1677	RAMONA FOOD AND VEG	28.1394	-25.859685	GAUTENG	Western Gauteng	CITY OF TSHWANE
24267	1312	DAWSON MOTORS	28.09649	-25.810428	GAUTENG	Western Gauteng	CITY OF TSHWANE
24268	21817	SANCARDIA LIQUORS	28.204868	-25.74458	GAUTENG	Western Gauteng	CITY OF TSHWANE
24269	26732	SAVE A RAND CASH & CARRY	28.12896	-25.742442	GAUTENG	Western Gauteng	CITY OF TSHWANE
24270	23200	THE LIQUOR COMPANY HILLCREST	28.241905	-25.758772	GAUTENG	Western Gauteng	CITY OF TSHWANE
24271	6992	FOOD LOVERS CAFE	28.225669	-25.805102	GAUTENG	Western Gauteng	CITY OF TSHWANE
24272	14213	WIERDA BRIDGE CAFE & SUPERMARKET	28.156839	-25.82604	GAUTENG	Western Gauteng	CITY OF TSHWANE
24273	30053	KINGS DINER	28.161007	-25.75424	GAUTENG	Western Gauteng	CITY OF TSHWANE
24274	36124	SANDYS TAKE AWAYS	28.150715	-25.755648	GAUTENG	Western Gauteng	CITY OF TSHWANE
24275	3085	CASH SALES NG51506	28.322749	-25.797097	GAUTENG	Western Gauteng	CITY OF TSHWANE
24276	6075	QUDUS CASH & CARRY	28.186104	-25.748734	GAUTENG	Western Gauteng	CITY OF TSHWANE
24277	3486	LISA CAFE	28.138008	-25.758804	GAUTENG	Western Gauteng	CITY OF TSHWANE
24278	12715	ARCHIES SUPERMARKET	28.195257	-25.747746	GAUTENG	Western Gauteng	CITY OF TSHWANE
24279	1188	BABAMA CASH & CARRY	28.18327	-25.75165	GAUTENG	Western Gauteng	CITY OF TSHWANE
24280	21148	RIO FAST FOOD	28.185883	-25.749546	GAUTENG	Western Gauteng	CITY OF TSHWANE
24281	23079	WONDERLAND SUPERMARKET	28.186144	-25.749247	GAUTENG	Western Gauteng	CITY OF TSHWANE
24282	16616	DANOK TRADING ENTERPRISE	28.186113	-25.748854	GAUTENG	Western Gauteng	CITY OF TSHWANE
24283	20146	ERGOFLEX 399 CC	28.1891	-25.748899	GAUTENG	Western Gauteng	CITY OF TSHWANE
24284	28412	GABY'S TAKE AWAY	28.16371	-25.716049	GAUTENG	Western Gauteng	CITY OF TSHWANE
24285	18864	LUCKY DIP	28.142929	-25.718285	GAUTENG	Western Gauteng	CITY OF TSHWANE
24286	23554	R5 STORE SUPERMARKET	28.306133	-25.085417	LIMPOPO	Northern Gauteng	BELA BELA MUNIC
24287	38817	LOVE & PEACE LIQUOR RESTAURANT	25.603584	-25.6878	NORTH WEST	Western Gauteng	MAFIKENG MUNIC
24288	17038	MABUSELA EATING HOUSE	28.98012	-24.14704	LIMPOPO	Northern Gauteng	MOGALAKWENA M
24289	10488	MOHWIBIDU FRUIT SHOP	28.98013	-24.14705	LIMPOPO	Northern Gauteng	MOGALAKWENA M
24290	22737	NGOAKONTSATSI GENERAL DEALER	28.98014	-24.14706	LIMPOPO	Northern Gauteng	MOGALAKWENA M
24291	2794	VERSTOTELING CAFE	28.98015	-24.14707	LIMPOPO	Northern Gauteng	MOGALAKWENA M
24292	1379	DITAU GENERAL DEALER	28.68151	-23.39662	LIMPOPO	Northern Gauteng	MOGALAKWENA M
24293	9508	CRECY CASH STORE	29.075033	-24.596176	LIMPOPO	Northern Gauteng	MOOKGOPHONG
24294	28980	MABITSELA CASH STORE	28.241567	-25.4003	GAUTENG	Western Gauteng	CITY OF TSHWANE
24295	17287	MASEKO GENERAL DEALER	28.236467	-25.396867	GAUTENG	Western Gauteng	CITY OF TSHWANE

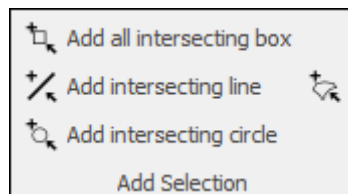
Selection Tab User Guide

	A	B	C	D	E	F	G
1	CODE	CUSTOMER NAME	LONGITUDE	LATITUDE	PROVINCE	REGION	MUNICIPALITY
24260	24121	TSIBISI FRUIT AND VEGETABLES	28.178162	-25.74734	GAUTENG	Western Gauteng	CITY OF TSHWANE
24261	29052	NEW COURT TAKE AWAYS	28.183642	-25.749511	GAUTENG	Western Gauteng	CITY OF TSHWANE
24276	6075	QUDUS CASH & CARRY	28.186104	-25.748734	GAUTENG	Western Gauteng	CITY OF TSHWANE
24278	12715	ARCHIES SUPERMARKET	28.195257	-25.747746	GAUTENG	Western Gauteng	CITY OF TSHWANE
24279	1188	BABAMA CASH & CARRY	28.18327	-25.75165	GAUTENG	Western Gauteng	CITY OF TSHWANE
24280	21148	RIO FAST FOOD	28.185883	-25.749546	GAUTENG	Western Gauteng	CITY OF TSHWANE
24281	23079	WONDERLAND SUPERMARKET	28.186144	-25.749247	GAUTENG	Western Gauteng	CITY OF TSHWANE
24282	16616	DANOK TRADING ENTERPRISE	28.186113	-25.748854	GAUTENG	Western Gauteng	CITY OF TSHWANE
24283	20146	ERGOFLEX 399 CC	28.1891	-25.748899	GAUTENG	Western Gauteng	CITY OF TSHWANE
28923	22588	CAPPYS FISH & CHIPS	26.85981	-26.84794	NORTH WEST	Western Gauteng	CITY COUNCIL OF
28924	11688	DEON BOTTLE STORE	26.86663	-26.84352	NORTH WEST	Western Gauteng	CITY COUNCIL OF
28925	14402	SUNNYSIDE TUCKSHOP	26.87754	-26.85044	NORTH WEST	Western Gauteng	CITY COUNCIL OF
28926	30310	HARRYS CAFE	26.78599	-26.83533	NORTH WEST	Western Gauteng	CITY COUNCIL OF
28927	39812	KABOUS FISH & CHIPS	26.77428	-26.8412	NORTH WEST	Western Gauteng	CITY COUNCIL OF
28928	33101	KHUMA MOTORS	26.859584	-26.847234	NORTH WEST	Western Gauteng	CITY COUNCIL OF
28929	19082	MIDTOWN LIQUOR STORE	26.76402	-26.8446	NORTH WEST	Western Gauteng	CITY COUNCIL OF
28930	32889	PICK & SAVE SUPERMARKET	26.77571	-26.84242	NORTH WEST	Western Gauteng	CITY COUNCIL OF
28931	23663	RATANANG CAFE	26.86673	-26.84328	NORTH WEST	Western Gauteng	CITY COUNCIL OF
28932	25087	SOMERSET SUPERMARKET	26.77349	-26.84602	NORTH WEST	Western Gauteng	CITY COUNCIL OF
28933	20264	STEVENS LIQUOR STORE	26.78883	-26.84329	NORTH WEST	Western Gauteng	CITY COUNCIL OF
28934	19014	TEMBEKA TRADING	26.75481	-26.86765	NORTH WEST	Western Gauteng	CITY COUNCIL OF
28935	9352	NGWENYA TAVERN	26.77662	-26.84402	NORTH WEST	Western Gauteng	CITY COUNCIL OF
28936	34975	BUFFELS CENTRE	26.80536	-26.89712	NORTH WEST	Western Gauteng	CITY COUNCIL OF
28938	26303	KHUMA SUPERMARKET	26.86644	-26.8505	NORTH WEST	Western Gauteng	CITY COUNCIL OF
29558							
29559							
29560							
29561							
29562							
29563							
29564							
29565							
29566							
29567							
29568							
29569							

The **Select selected elements in Excel** button can also be accessed from the Quick Access Toolbar:

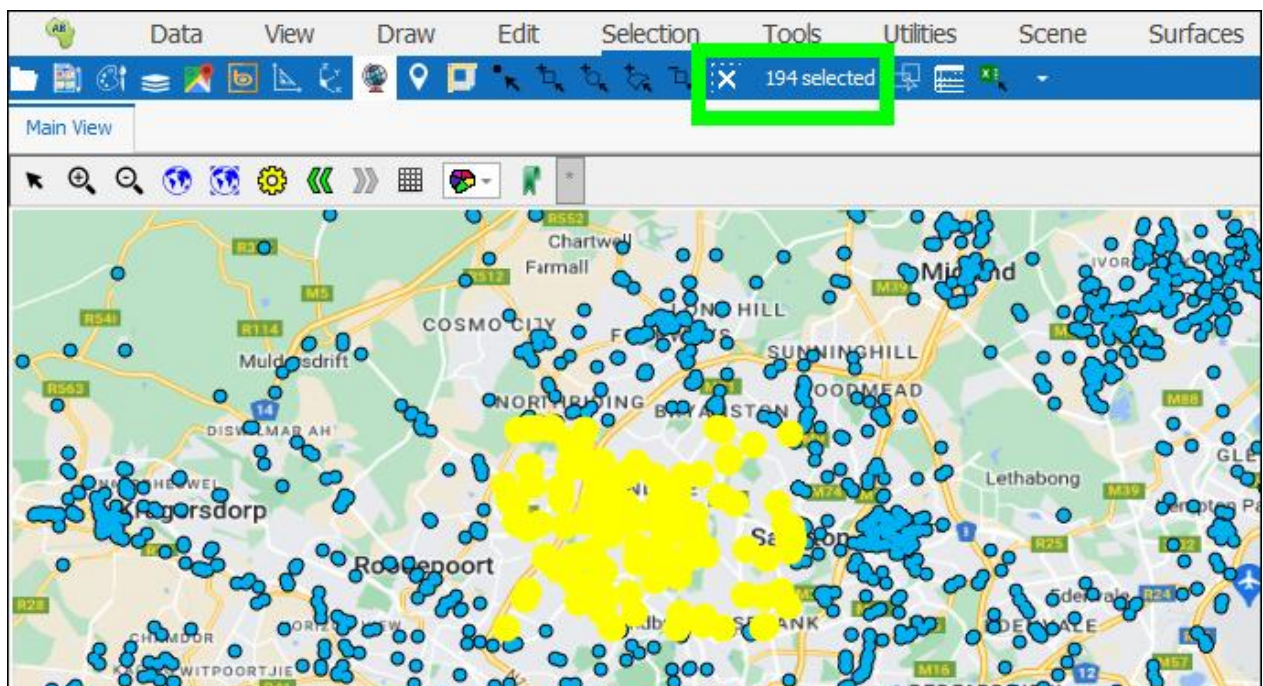


Add Selection

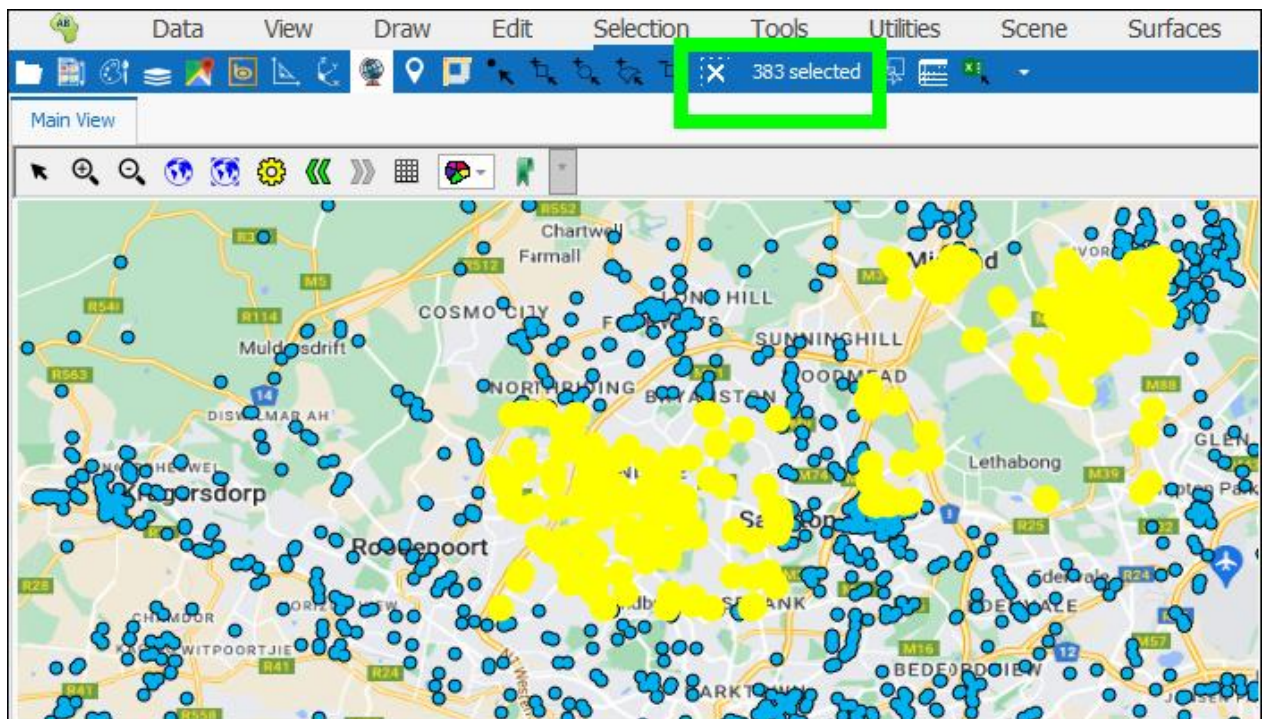
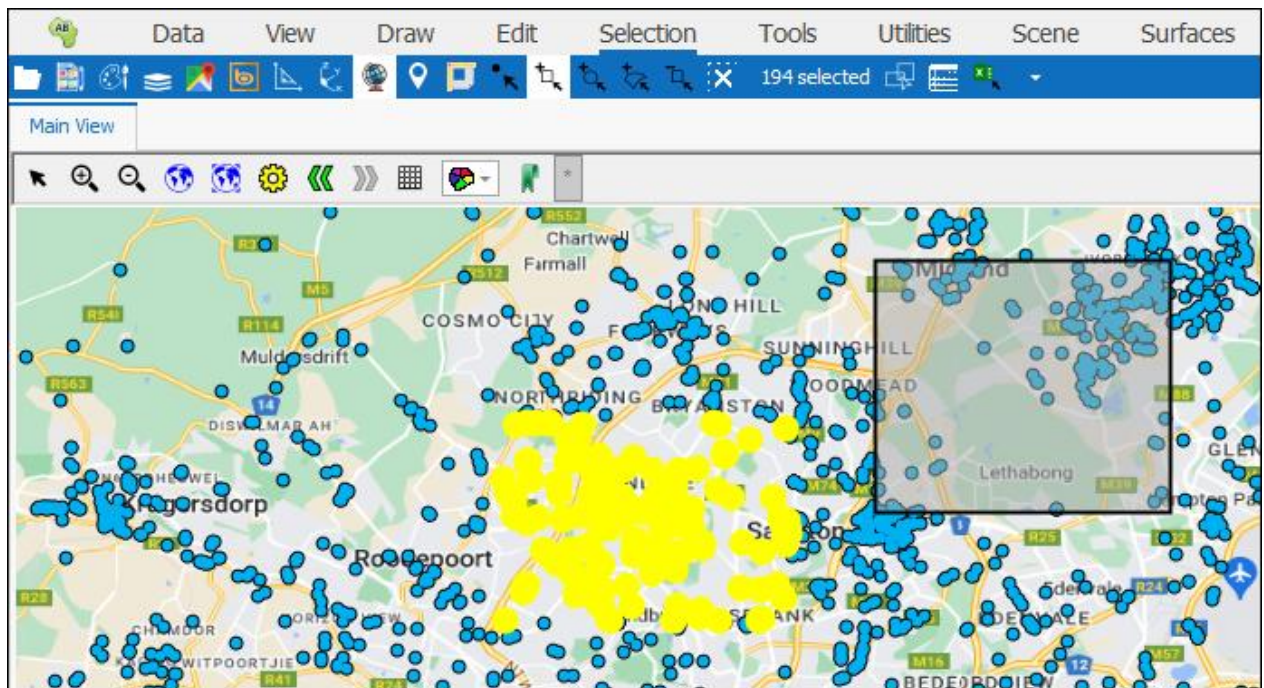


The **Add Selection** section of the tab has the same tools as the **Selection** section that work the same, the only difference is that as you use them, they *add* elements to the selection and do not set the selection to exclusively the elements you have just selected.

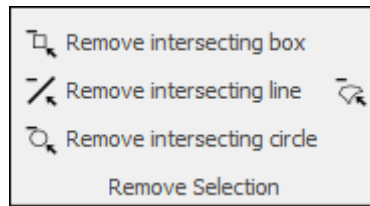
For example, you can select some elements with an intersecting box and then if you select other elements with this same or another tool in this tab, they are *added* to the number of currently selected items:



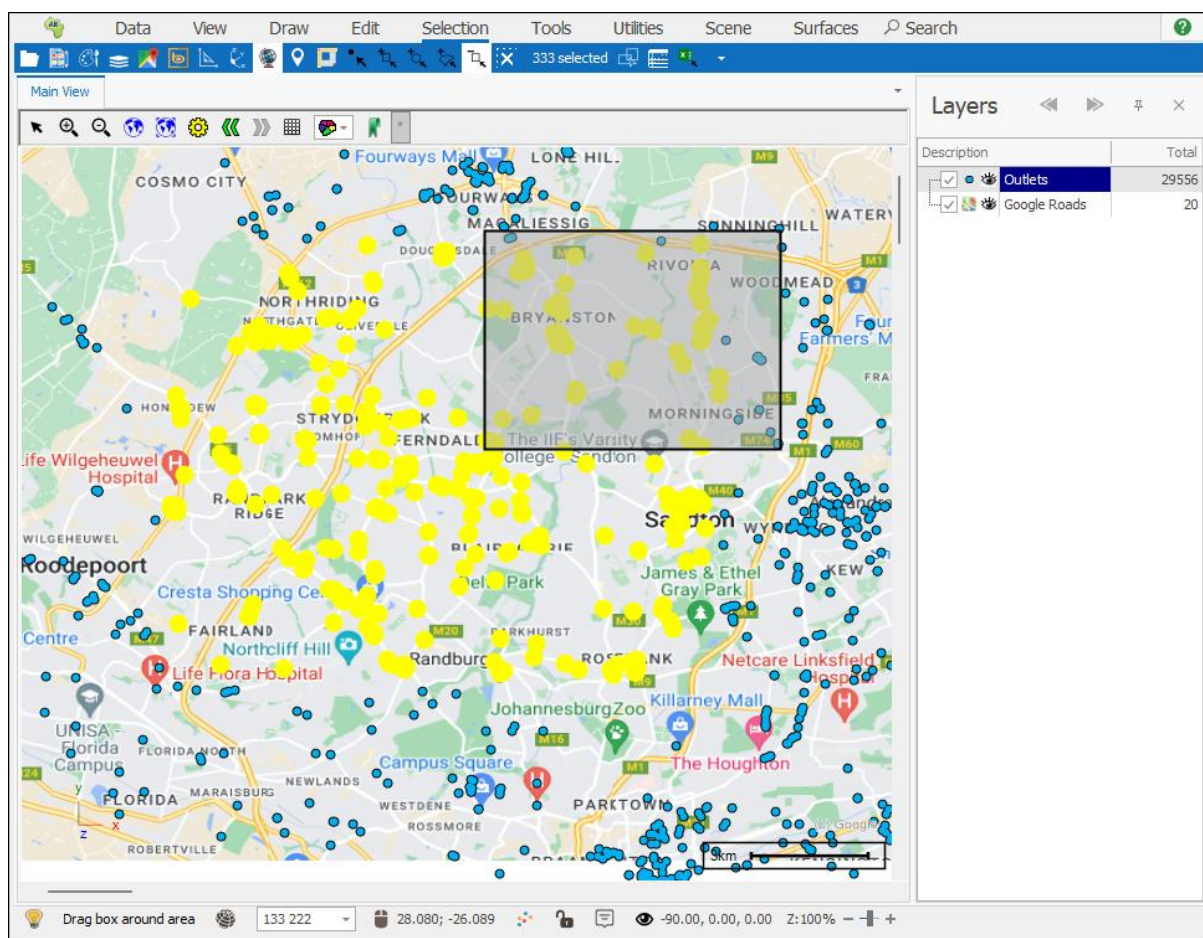
Selection Tab User Guide



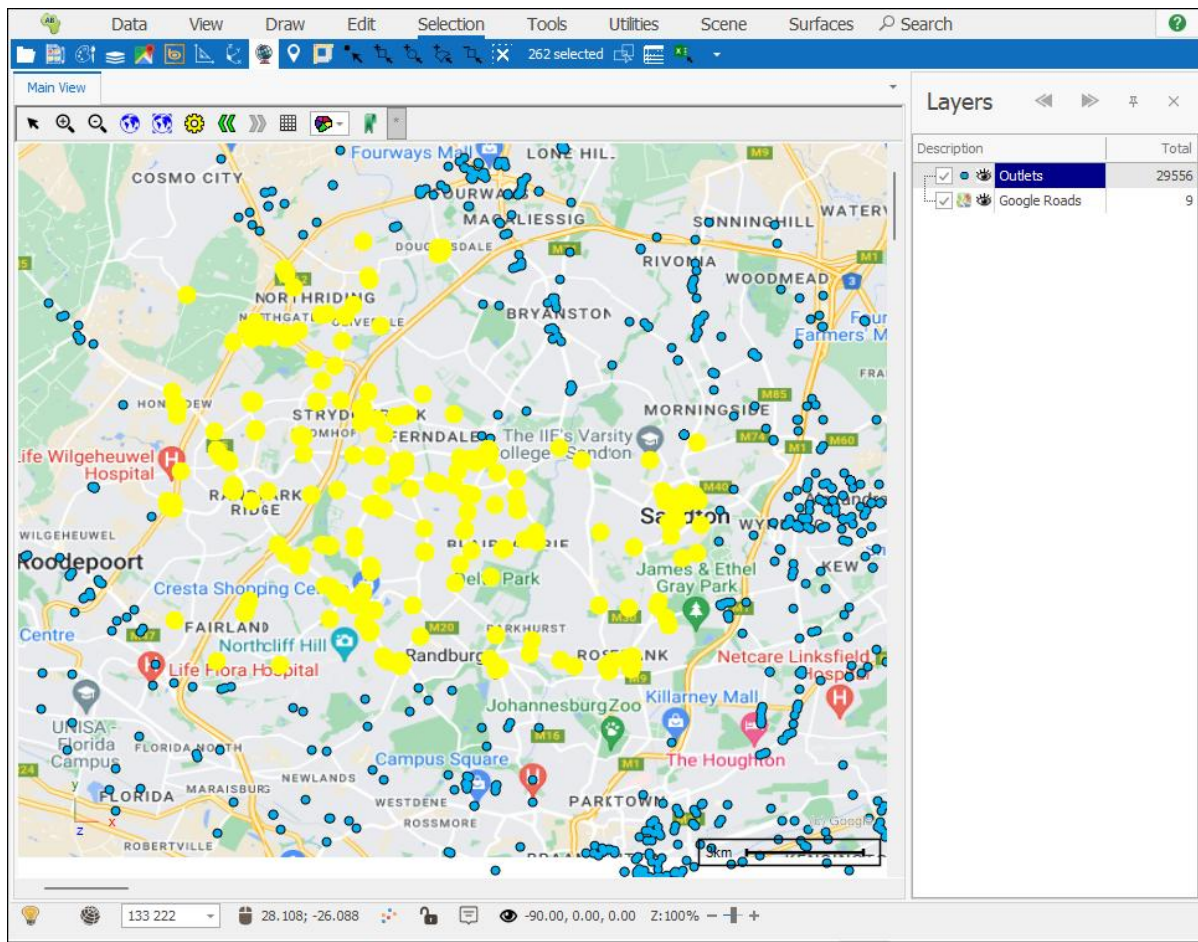
Remove Selection



The **Remove Selection** of the tab contains the same kind of tools as can be found in the other sections of the tab; the only difference is these tools are used to *remove* elements from selection. For example, you might have selected an area of items and then want to remove some from the selection:



Selection Tab User Guide



Support

T: +27871354351



support@primethought.biz - primethought.biz
Kyalami Estate, Midrand, Johannesburg,
1684, South Africa

