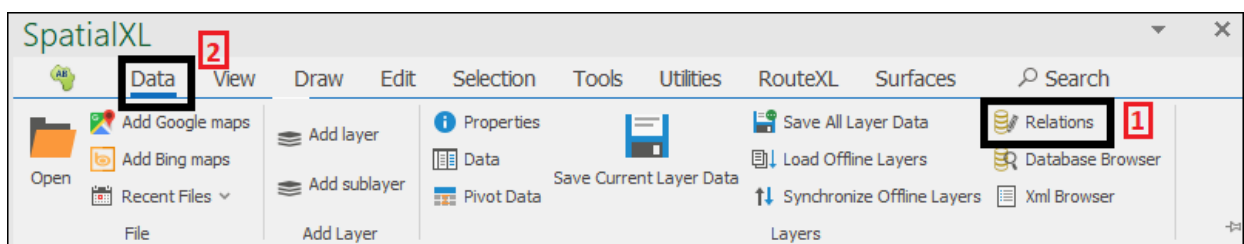


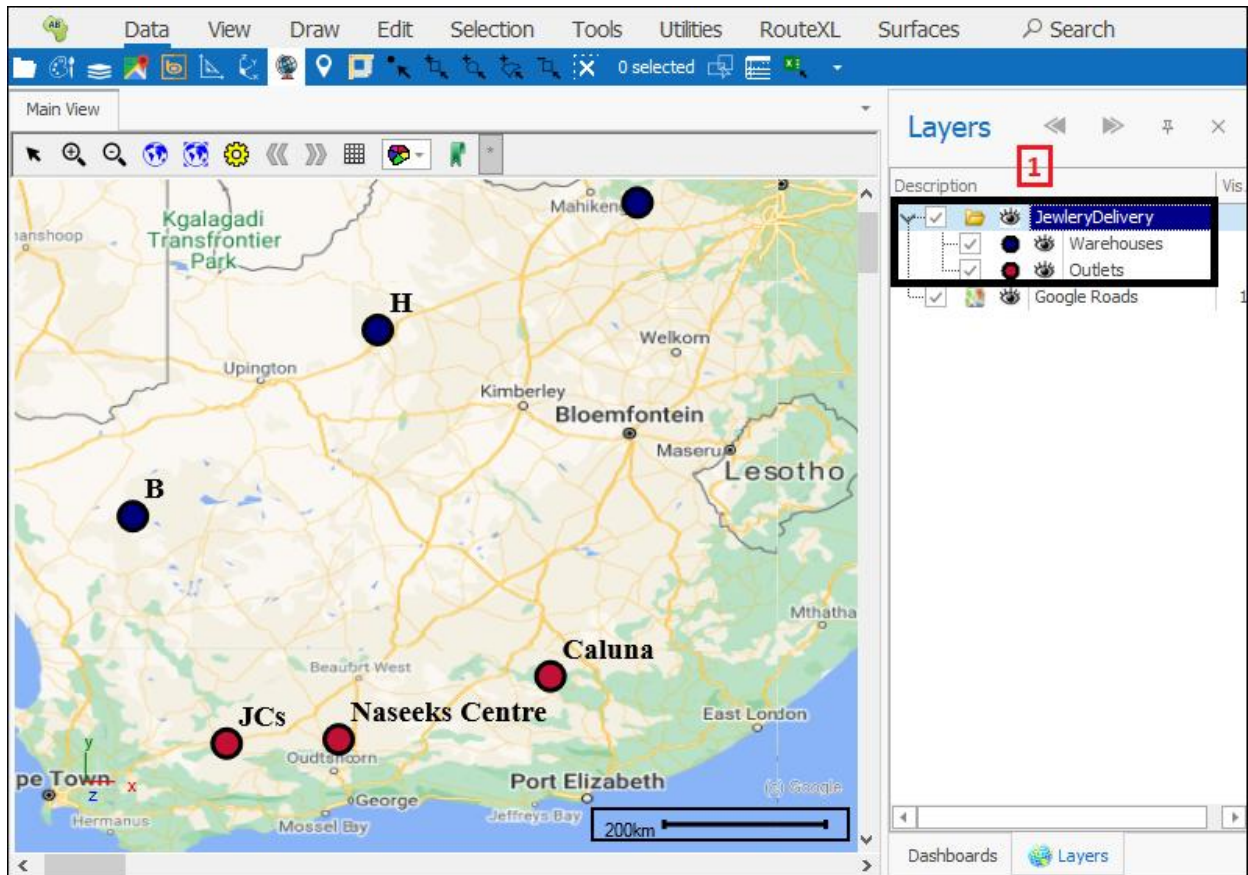


# Relations User Guide

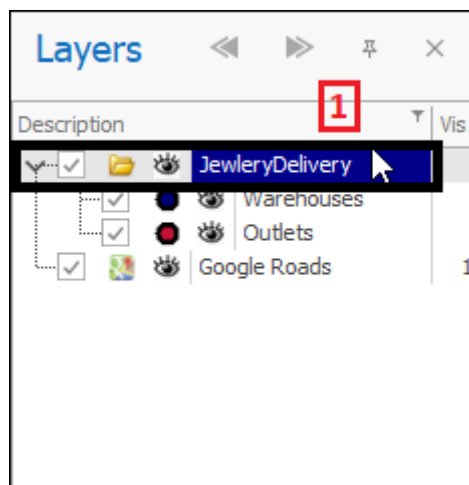
**Relations**(1) is a feature available in all our spatial products. It is found in the **Data** tab(2) of the spatial pane:

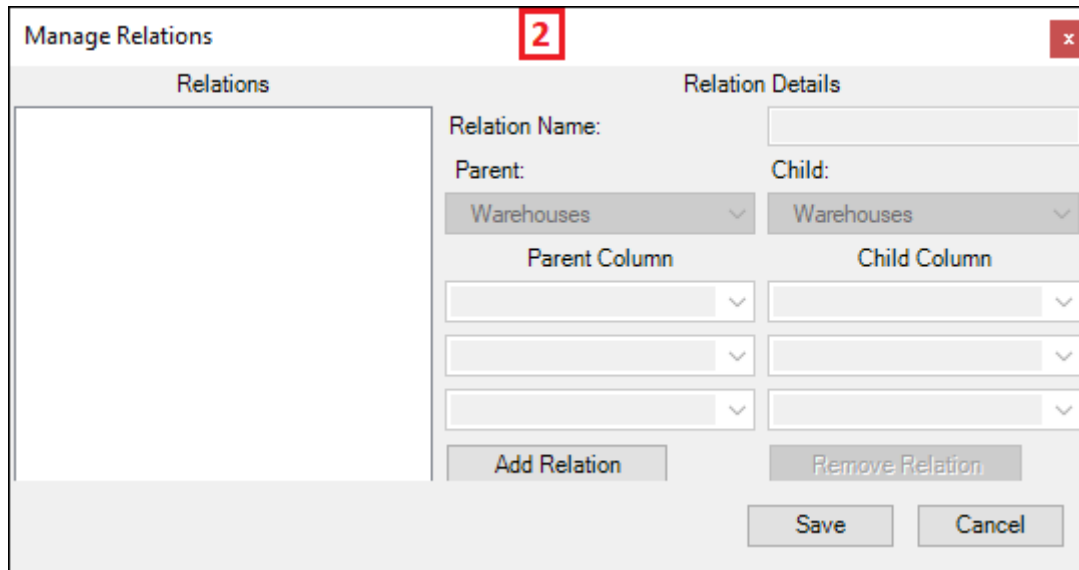


This tool is used to create master-detail links between layers. It works with top level layers meaning a layer that contains a set of sublayers(1):



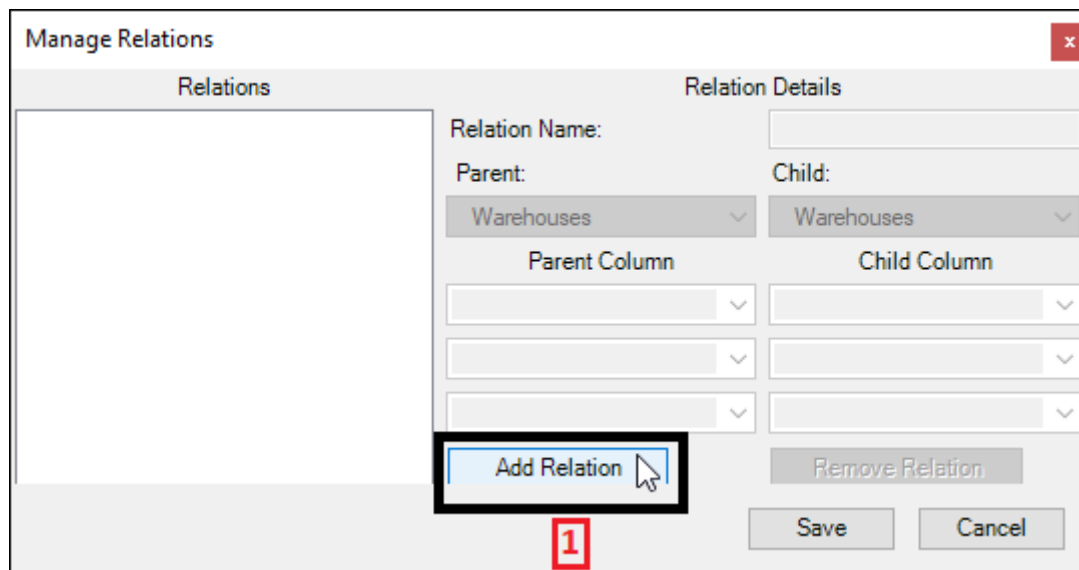
In this example I will be creating a link between layers: **Warehouses** and **Outlets**. I start by having my top-level layer called **JewleryDelivery** highlighted by clicking on it(1). I then click on the tool which brings up the **Relations** dialogue(2) where I can set up relations for this layer:





The screenshot shows the 'Manage Relations' dialog box. It has a title bar with a close button (X). The dialog is divided into two main sections: 'Relations' on the left and 'Relation Details' on the right. The 'Relations' section is currently empty. The 'Relation Details' section contains the following fields: 'Relation Name:' (text input), 'Parent:' (dropdown menu with 'Warehouses' selected), 'Child:' (dropdown menu with 'Warehouses' selected), 'Parent Column' (three stacked text input fields), and 'Child Column' (three stacked text input fields). At the bottom of the 'Relation Details' section are two buttons: 'Add Relation' and 'Remove Relation'. At the bottom of the entire dialog are two buttons: 'Save' and 'Cancel'. A red box with the number '2' is positioned above the 'Add Relation' button.

Start by clicking the **Add Relation**(1) button to create a new relation:



This screenshot is identical to the one above, but with additional highlighting. A black rectangular box surrounds the 'Add Relation' button. Below this box, a red box with the number '1' is placed. The 'Add Relation' button is a light blue button with the text 'Add Relation' and a mouse cursor icon pointing at it.

The new relation is shown in the **Relations** box to the right(1). Put in the relation name by **Relation Name**(2). Then specify the **Parent** and **Child** layer in the relation(3); the Parent being the source layer and the Child being the layer being linked to. Then choose what column/s you will be linking on in the Parent and Child layers(4):

Finally click **Save**(1) and your relation will have been created. If there is any problem in linking and creating the relation you will be told when you click **Save**:

If we now go to view the Layer Data Grid of my Warehouses layer you will see a little plus next to each record(1) which if I open will show the related outlet(2):

## Relations User Guide

Layer Data: Warehouses

Main

Filter Graphics, Columns, Refresh, Filter

Inplace, Delete, Properties, Edit

Zoom, Zoom and Highlight, Pan, Selection

Highlight All, Un Highlight All, Un Highlight Selected, Highlight Selected

Copy, Copy Html, Export to Excel, Output

Print, Pivot

Drag a column header here to group by that column

Row	Warehouse ID	Warehouse	Own_No	long	lat
1					
2	1	H	5	22.8437223782448	-27.658051458259
3	2	B	4	19.571767782554	-30.144736950984
4	3	D	6	26.3119942496771	-25.9566350684997

Layer Data: Warehouses

Main

Filter Graphics, Columns, Refresh, Filter

Inplace, Delete, Properties, Edit

Zoom, Zoom and Highlight, Pan, Selection

Highlight All, Un Highlight All, Un Highlight Selected, Highlight Selected

Copy, Copy Html, Export to Excel, Output

Print, Pivot

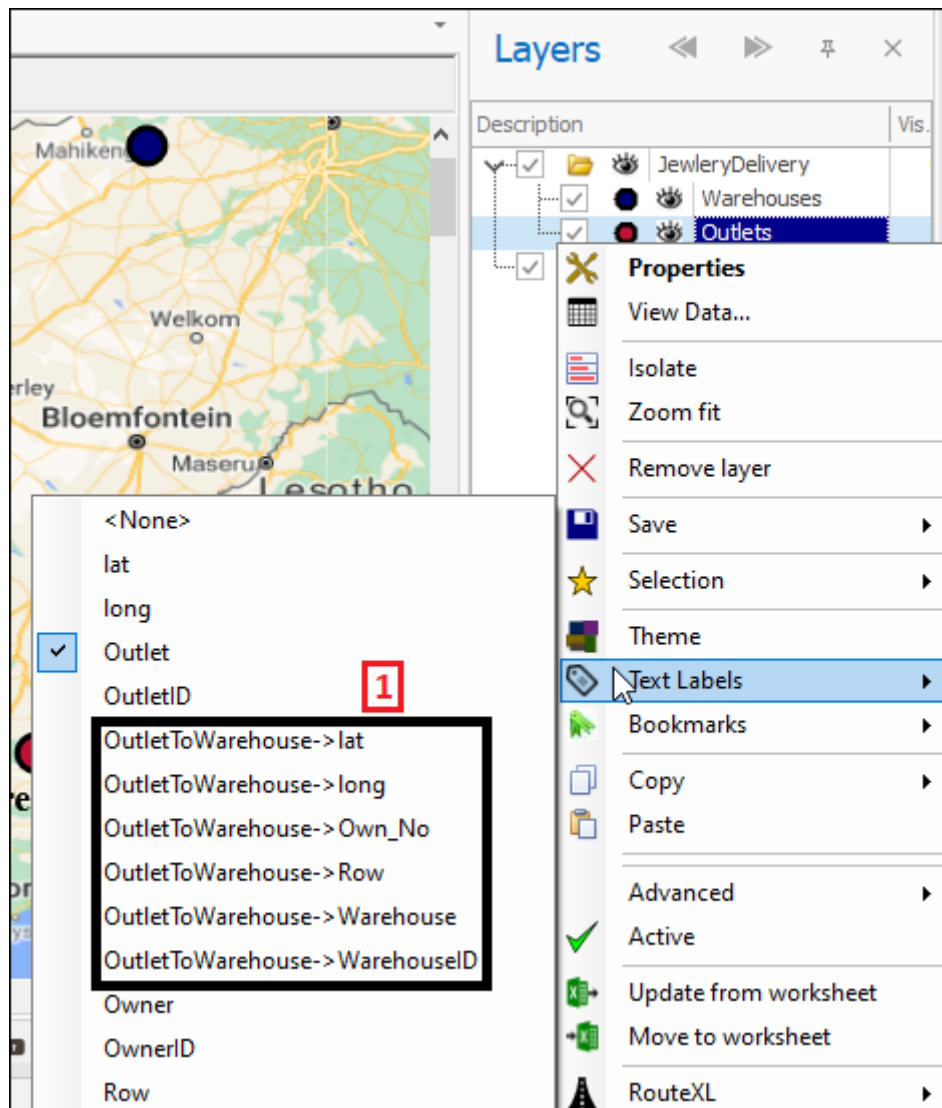
Drag a column header here to group by that column

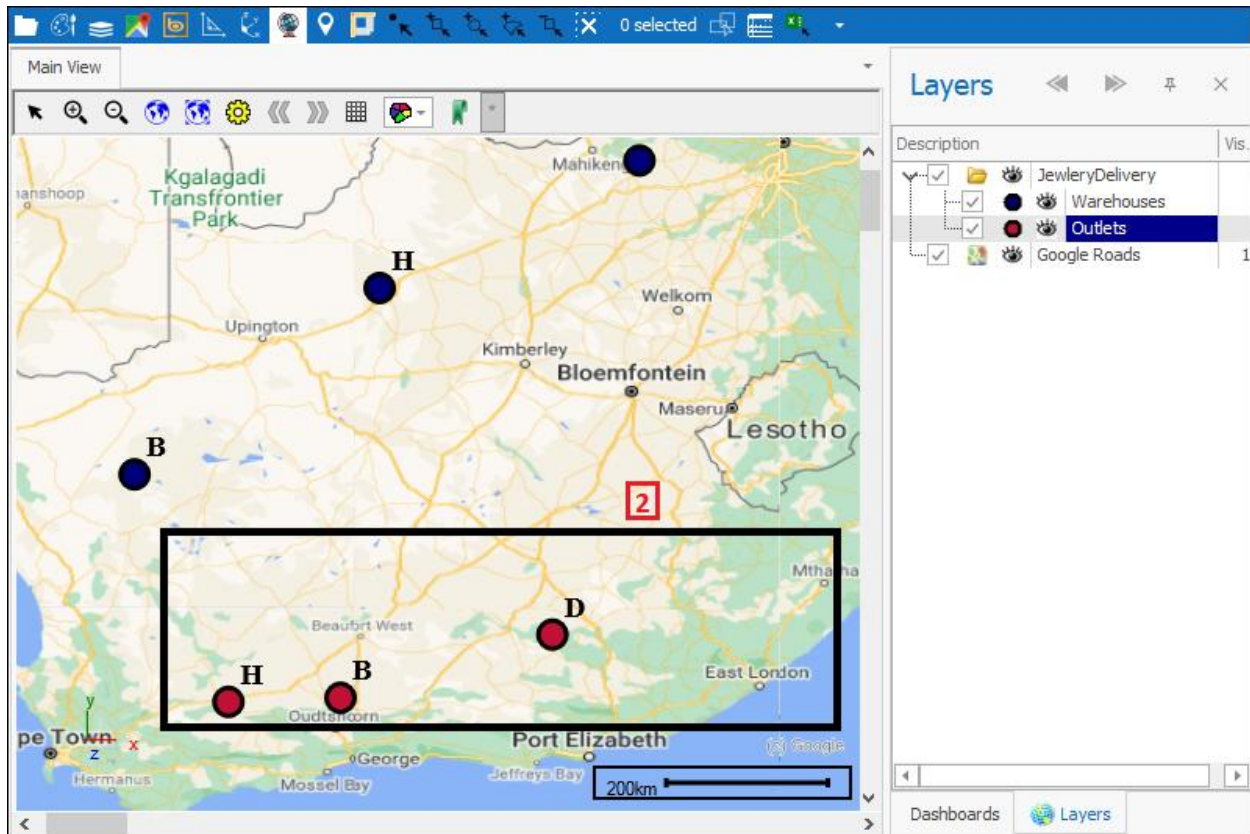
Row	Warehouse ID	Warehouse	Own_No	long	lat
2	1	H	5	22.8437223782448	-27.658051458259
3	2	B	4	19.571767782554	-30.144736950984
4	3	D	6	26.3119942496771	-25.9566350684997

Outlet To Warehouse

Actual Geometry	Row	Outlet ID	Outlet	Owner ID	Owner	long	lat
POINT(20.8249003837906 -33.1797092799388)	2	1	JCs	4	Billy	20.8249003837906	-33.1797092799388

If I now right click on my Outlets layer and go to text labels you will see I now have more options of labels to put because of this relation that has been created(1). I will choose one of these as a label which will display a label of which warehouse each outlet belongs to in my scene(2):





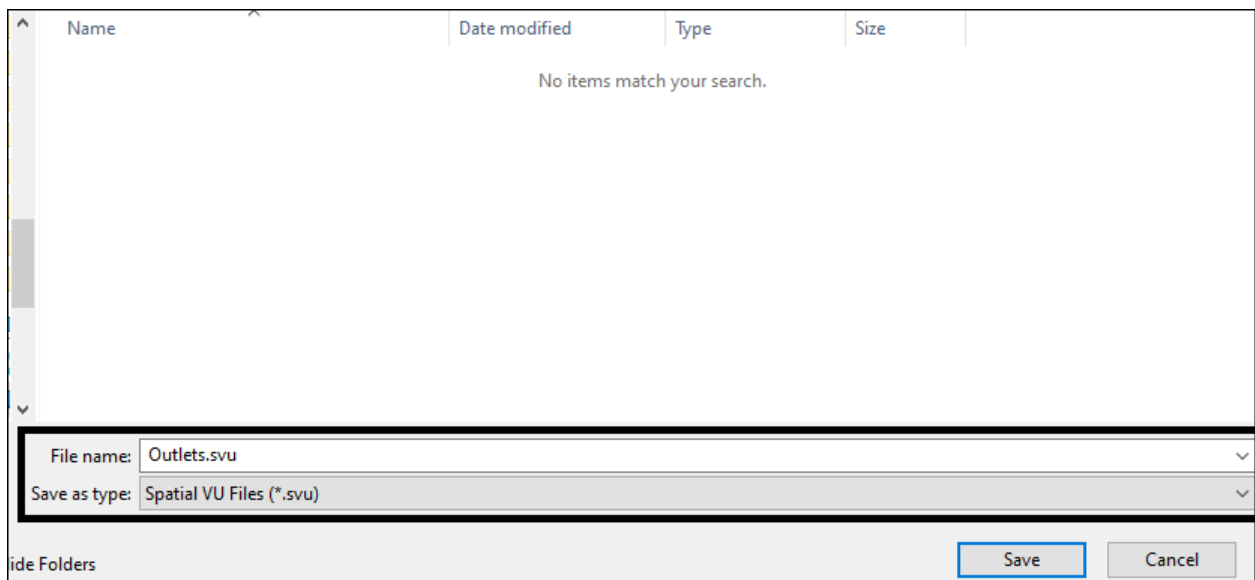
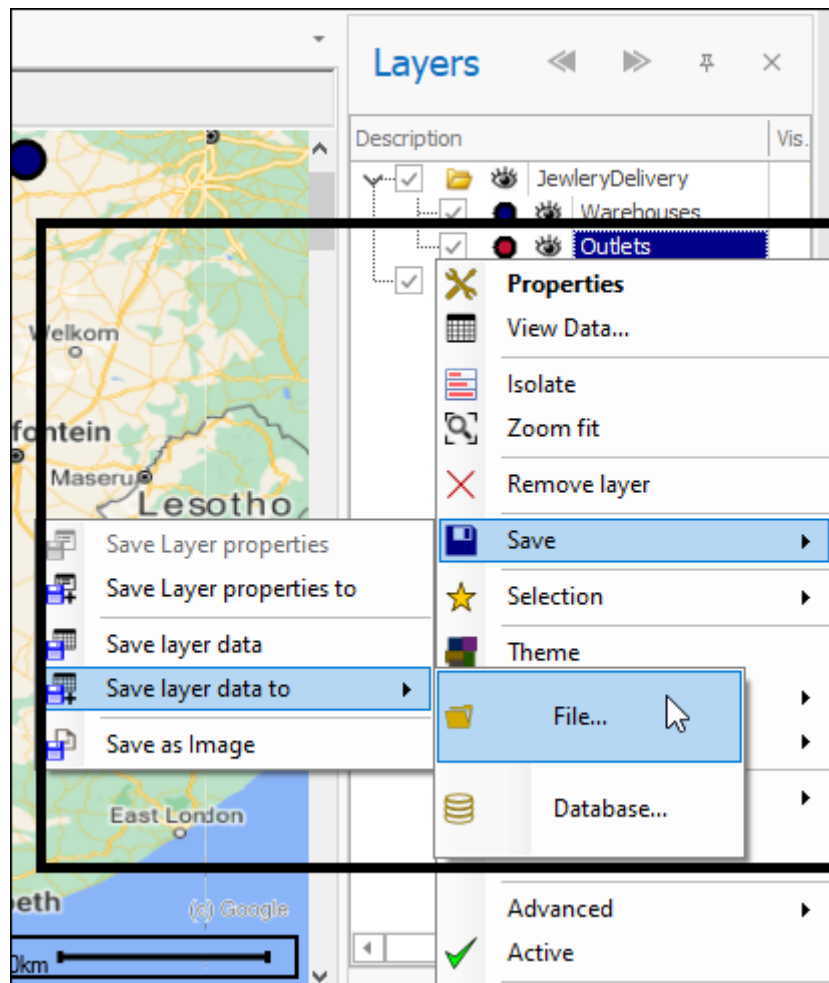
This is just an example of one of the ways in which the relations can be used. You can also take advantage of relations in applying themes to layers as well so that you theme on some related column in a linked layer.

You can set up more than one relation for your layer(1), just follow the same steps to create another. To remove a relation click the **Remove Relation(2)** button:

The screenshot shows a 'Manage Relations' dialog box. On the left, under the 'Relations' tab, there is a list with two items: 'OutletToWarehouse' (selected and highlighted with a blue background) and 'OwnerToWarehouse'. A red box with the number '1' is placed over the list. On the right, under the 'Relation Details' tab, the 'Relation Name' is 'OutletToWarehouse'. The 'Parent' is 'Warehouses' and the 'Child' is 'Outlets'. The 'Parent Column' is 'WarehouseID' and the 'Child Column' is 'OutletID'. Below these are two empty dropdown menus. At the bottom, there are four buttons: 'Add Relation' (highlighted with a red box and the number '2'), 'Remove Relation' (highlighted with a black box), 'Save', and 'Cancel'.

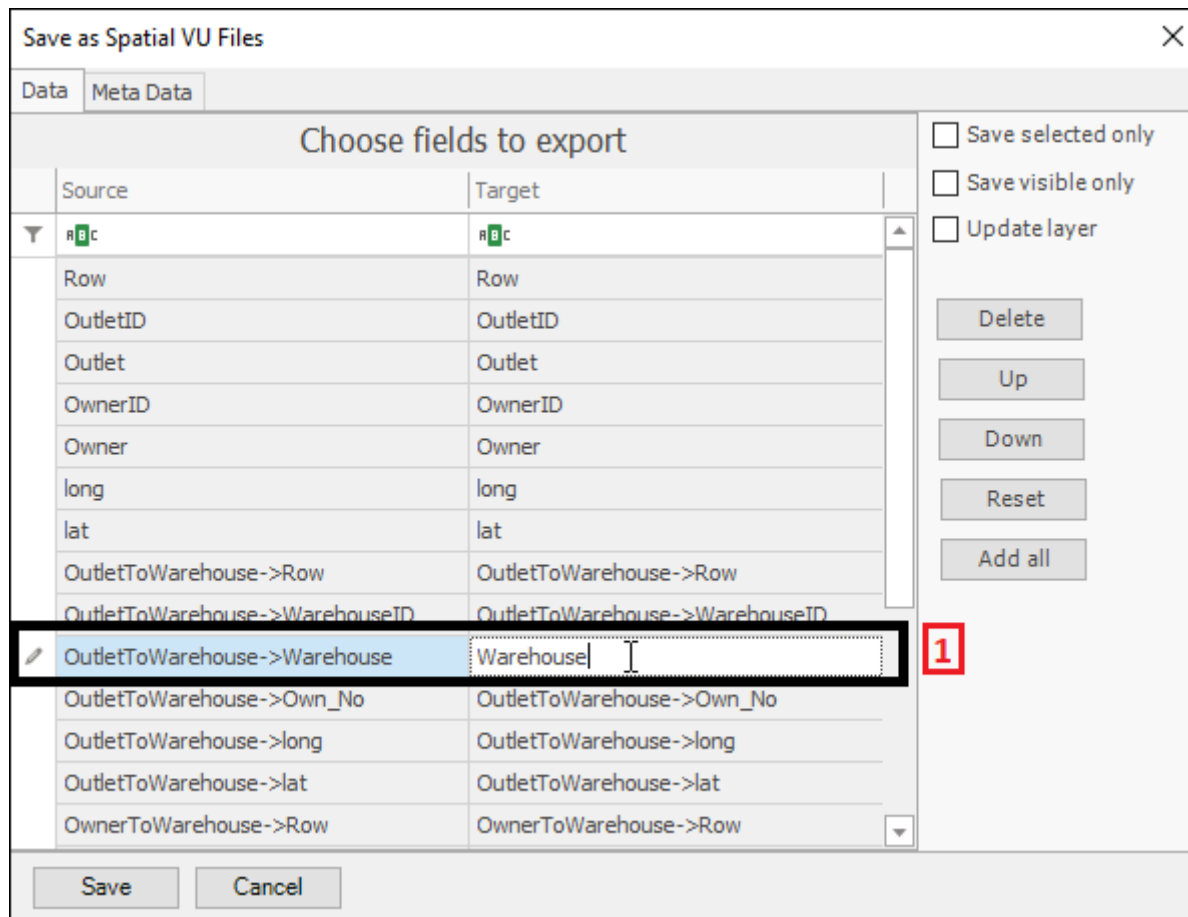
What you can now do is save the layer out as an SVU file with the linked data columns that you would like to have included in the layer. With this tool you are able to create multiple relations between layers which can all then be saved out in one layer. How this is done is shown below:

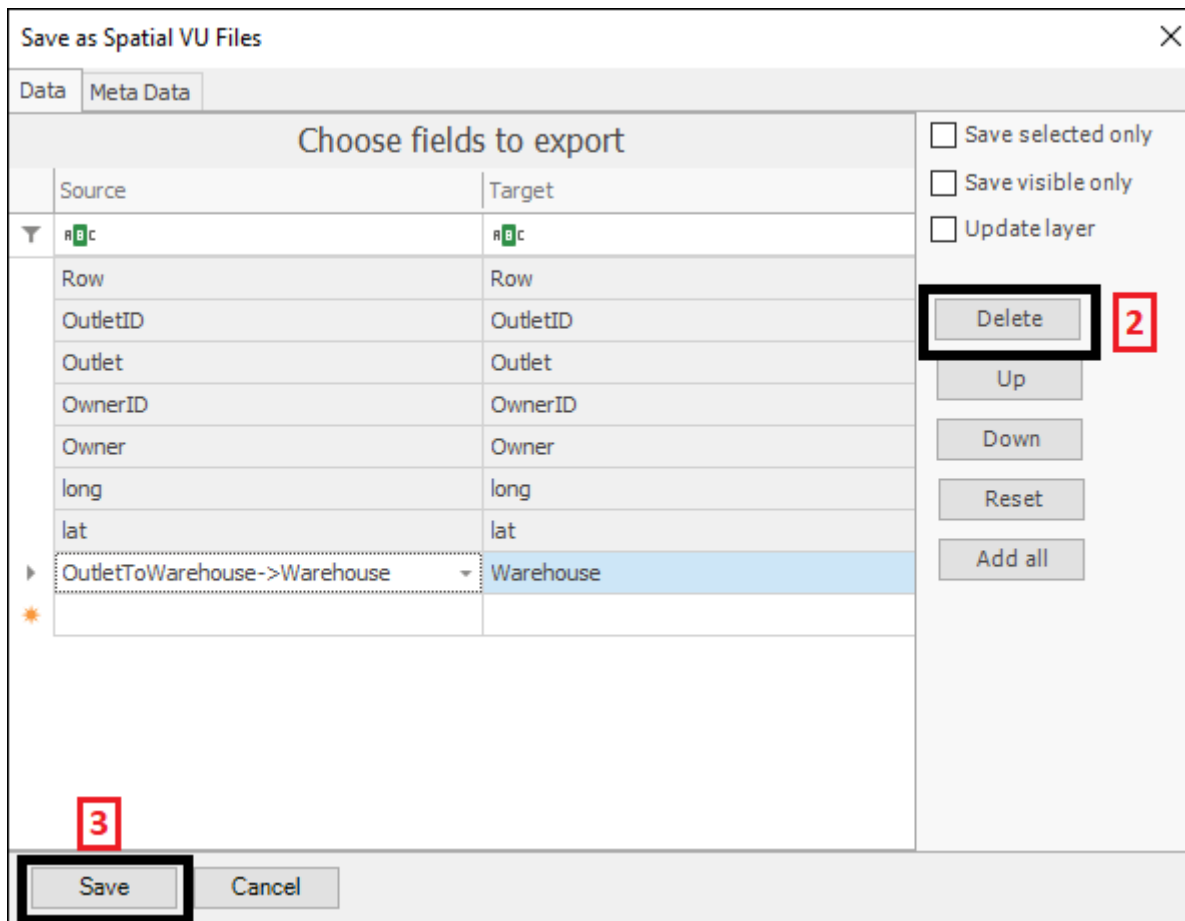




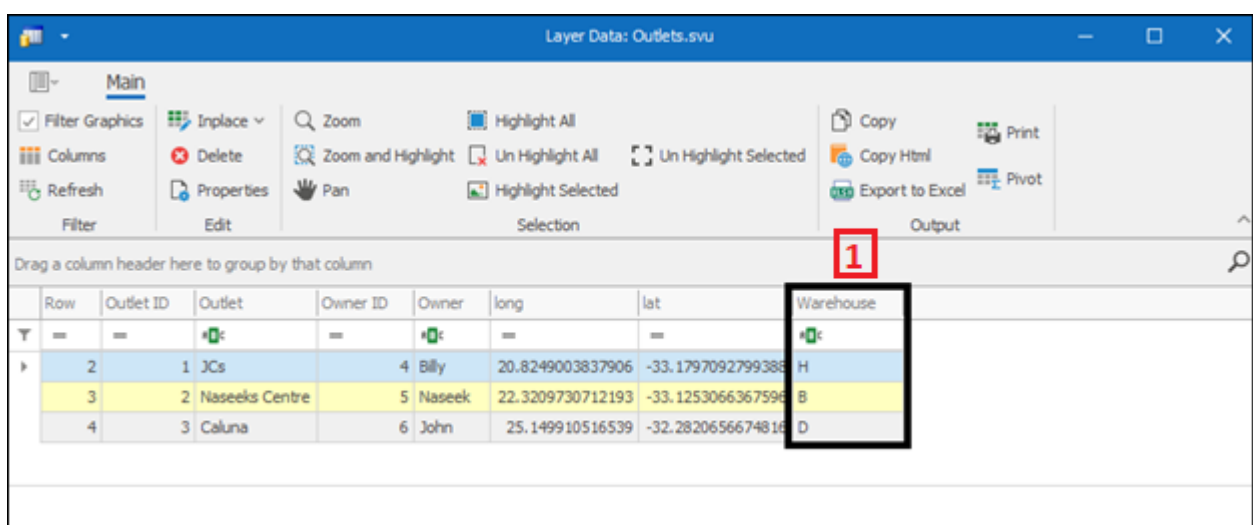
In the Save as Spatial VU Files dialogue that comes up you can choose which linked columns you'd like to export in saving to file. I will choose to keep just

**OutletToWarehouse>Warehouse** out of the linked columns and I will name it **Warehouse**(1) and delete the rest using the **Delete**(2) button. Then I will click **Save**(3):





If I bring in this new saved file and view its data you will see the extra linked column I chose to include in it(1):



## Support

---

T: +27871354351



[support@primethought.biz](mailto:support@primethought.biz) - [primethought.biz](http://primethought.biz)

Kyalami Estate, Midrand, Johannesburg,  
1684, South Africa

