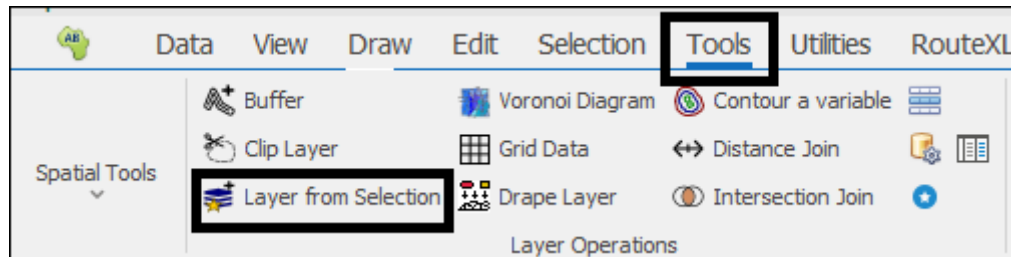
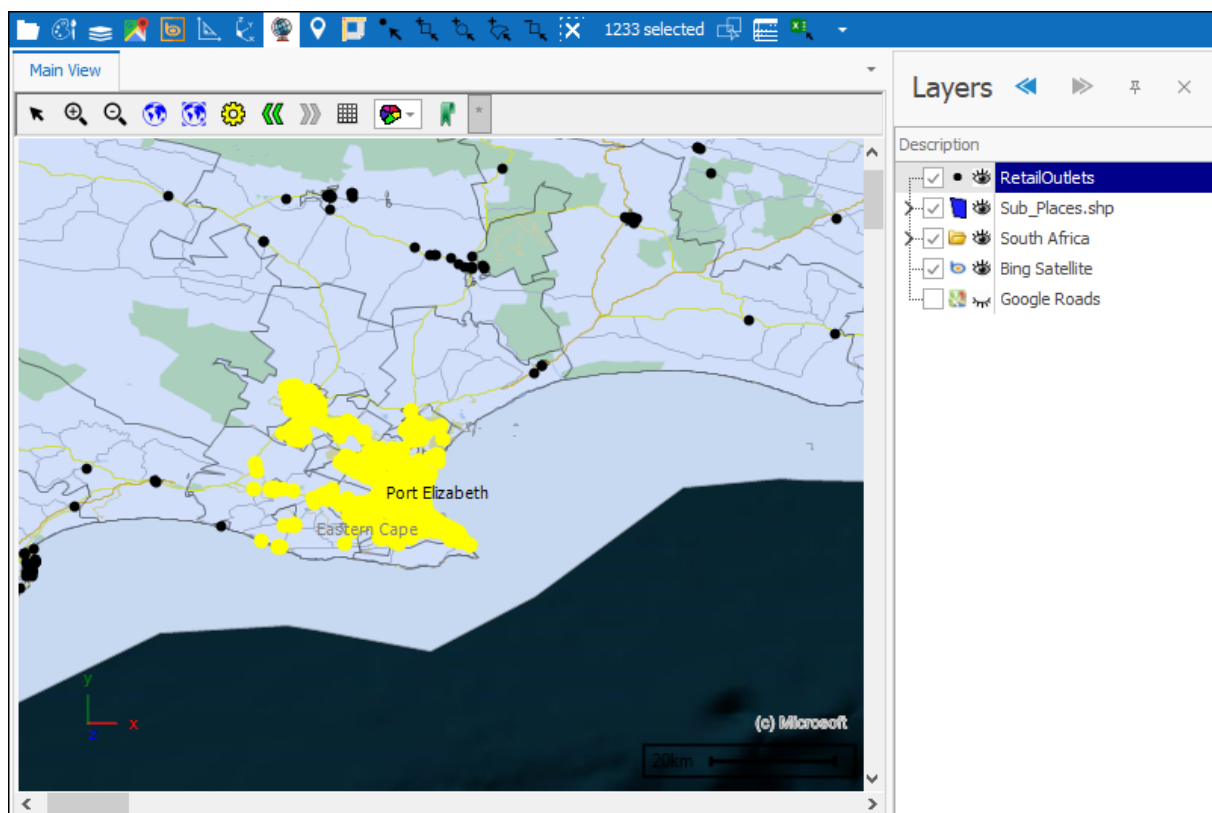




## Layer from Selection



The **Layer from Selection** tool allows you to create a new layer from selected elements in your scene. First select the elements:



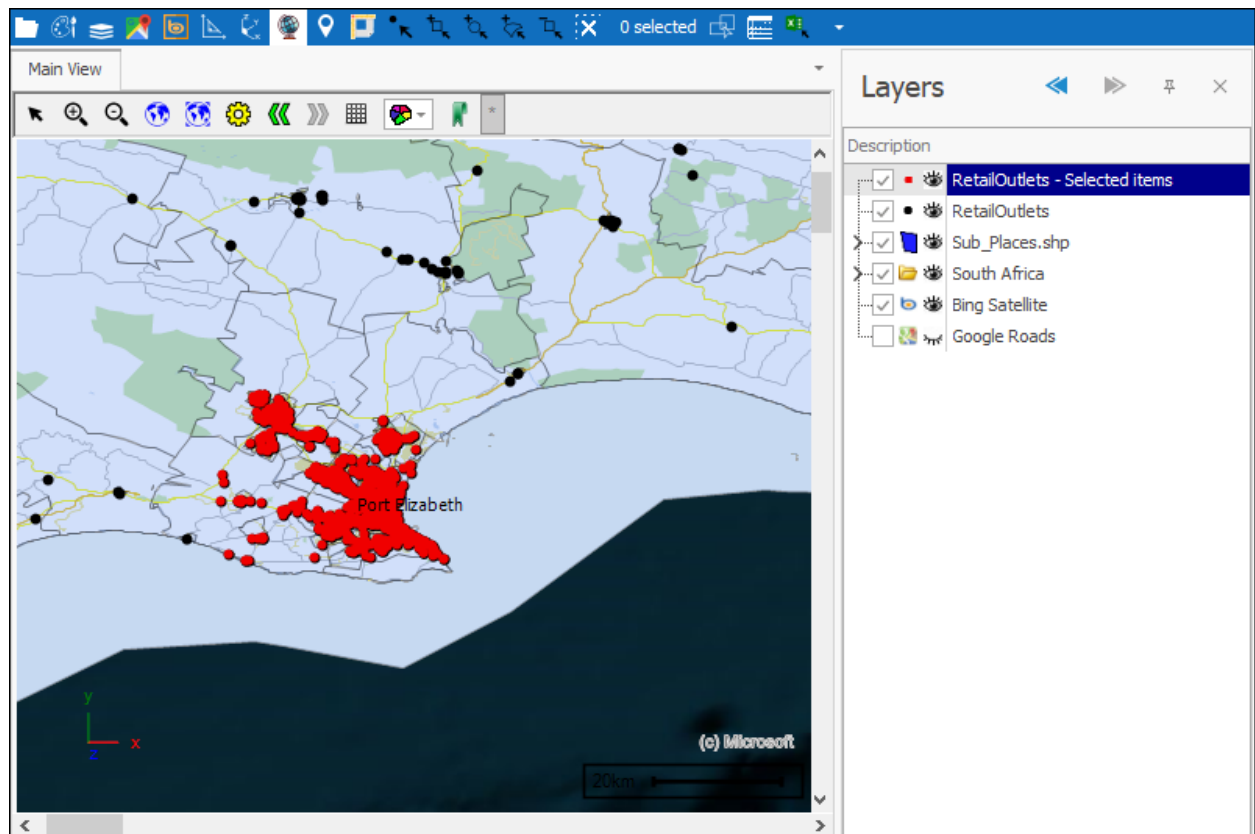
Then click the tool and you are prompted to set the properties of the new layer, then click **OK** and a new layer with your selected elements is added:

The screenshot shows a dialog box titled "New layer from RetailOutlets - Selected items" with a close button (X) in the top right corner. The dialog is divided into a left sidebar and a main content area. The sidebar contains a list of tabs: General, Data, Styling, Text, Thematics, Links, Projection, Input Transform, Event Scripts, and Editing. The "General" tab is currently selected. The main content area contains the following fields and controls:

- Description:** A text field containing "RetailOutlets - Selected items".
- Display Layer:** A checkbox labeled "Display Layer (Will render on Map, otherwise just holds data)" which is checked. A "Reload" button is located to the right of this checkbox.
- Display from Scale:** Two numeric input fields. The first is set to "0" and the second is set to "6,000,000,000". They are separated by the text "to:".
- Transparency:** A horizontal slider with a minus sign on the left and a plus sign on the right. The slider is currently positioned at the far left (0% transparency).
- Properties:** A row of checkboxes: "Selectable" (checked), "Snapable" (checked), "Editable" (unchecked), "Include in legend" (checked), and "Background layer" (unchecked).
- Read Only:** A row of checkboxes: "Read Only" (unchecked), "Publish Readonly" (checked), "Data Read Only" (unchecked), and "Publish Data Readonly" (checked).
- Mnemonic Display:** A section containing an "Image:" label, a "Change" button, a "Clear" button, and a "Dimension:" label followed by a numeric input field set to "0".

At the bottom of the dialog, there are three buttons: "OK", "Apply", and "Cancel". The "OK" button is highlighted with a blue border.

## Layer From Selection User Guide



## Support

T: +27871354351



[support@primethought.biz](mailto:support@primethought.biz) - [primethought.biz](http://primethought.biz)

Kyalami Estate, Midrand, Johannesburg,  
1684, South Africa

