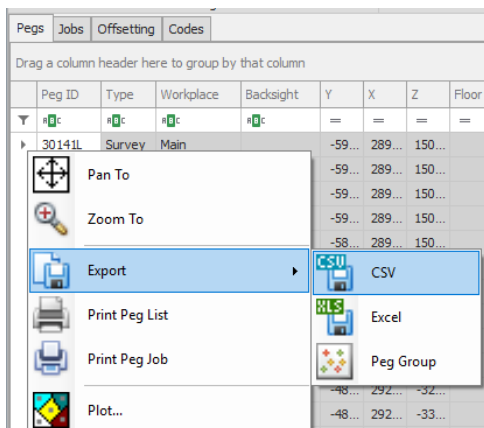


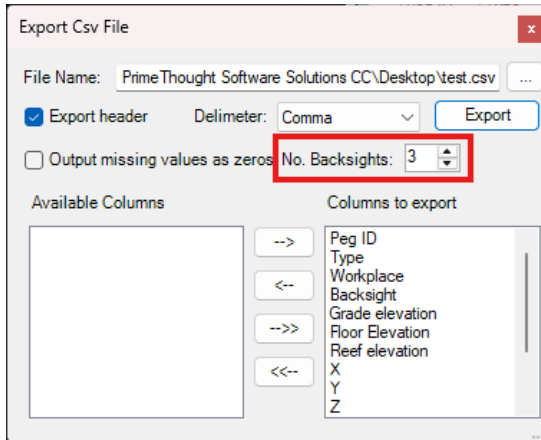
SurveyXL 5.1.0.40 Release Notes

- ✓ New Instrument Interface features under “File Import Settings” tab for importing your readings files! See the [user guide](#) for more details.
- ✓ Instrument Interface can be protected and only administrator can make any changes to data as downloaded from the instrument.
- ✓ New safety factor calculations for “Van Der Merwe” and “Squat” in Offline Mining.
- ✓ Pillar extraction % is included in the Offline Mining report now.

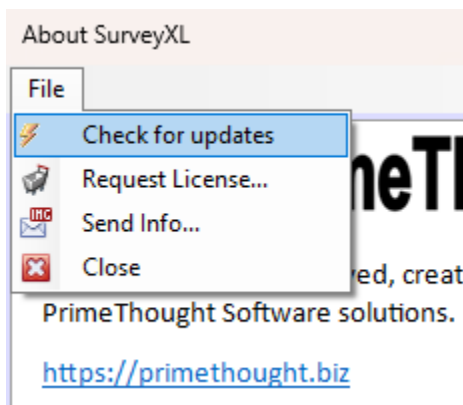
Overmined	Undermined	Area	Perimeter	Planned Area	Extraction Percentage
56,17	0,00	87,84	36,26	144,01	61,0
60,25	0,00	83,76	35,51	144,01	58,2
52,45	0,00	91,56	38,23	144,01	63,6
Total:168,88	Total:0,00	Total:263,15		Total:432,03	

- ✓ You can now specify the number of backsights to be exported per peg when exporting pegs to CSV.





- ✓ Various bugfixes.
- ✓ You can now update to the latest version right within SurveyXL itself. Simply go to *Help | About* then in the File pull-down click “Check for Updates”.



You can now also request a license or send your machine info using the “Request License” and “Send Info...” buttons found in the File pull-down menu as well.

Support



T: +27871354351

support@primethought.biz - primethought.biz

Kyalami Estate, Midrand, Johannesburg,
1684, South Africa

