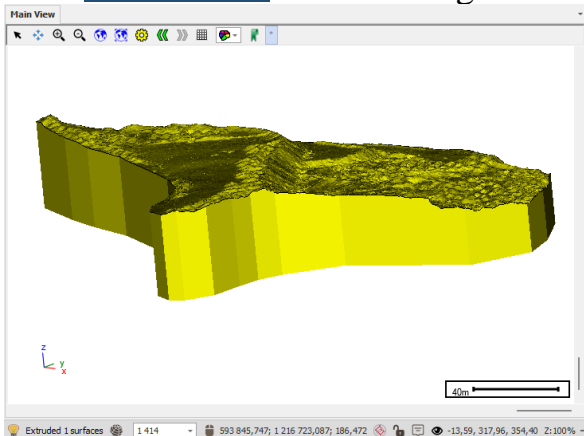


## SpatialXL 11.2.0.4 Release Notes

- ✓ Major stability bugfix on working with multiple Excel workbooks at the same time.
- ✓ Fixes on Print Template scene display.
- ✓ Fix on loading KML files.
- ✓ Fix on reading and writing GEOJSON files.
- ✓ Other minor bugfixes.
- ✓ New [Extrude tool](#) for extruding surfaces!

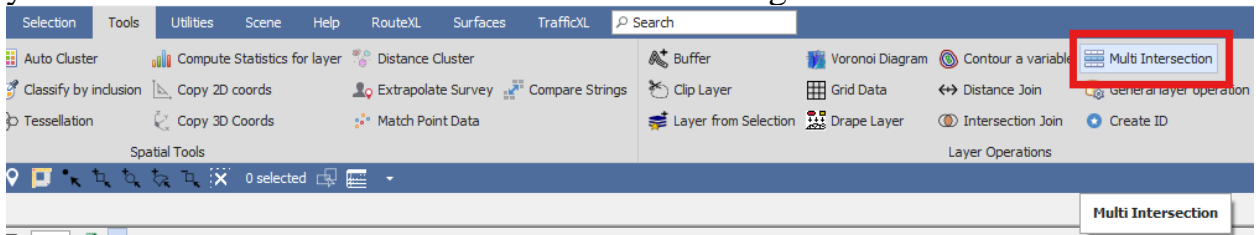


- ✓ New feature to drape images onto 3D surfaces! For example, an arial satellite image of a mine dump can be draped onto the actual mine dump surface:

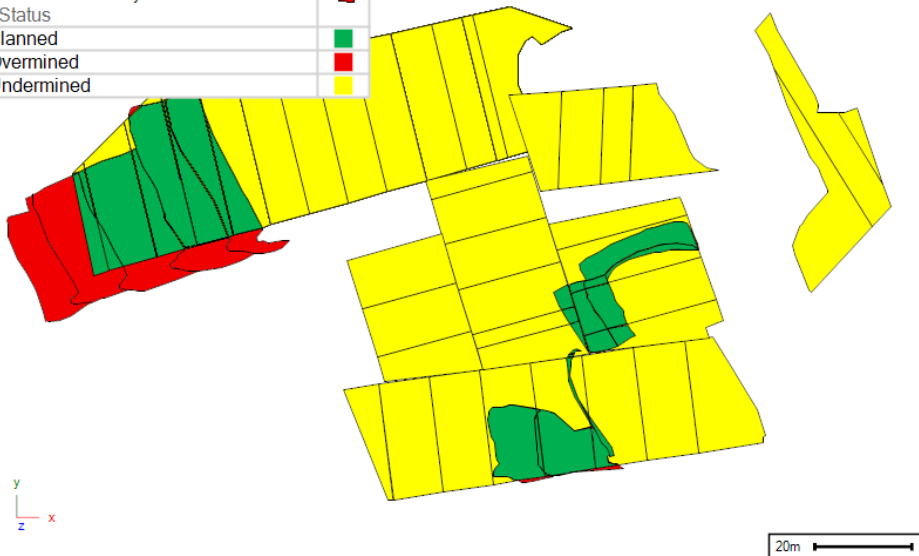


Check out this new feature in the “Draping Images onto Surfaces” section of the [Working with Images user guide!](#)

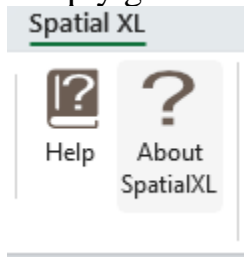
- ✓ New and improved Multi Intersection tool that allows you to do get the intersection of multiple layers such as a layer with planned mining blocks and actual mining done and see how much of the planned you mined, how much you overmined and how much was not mined enough.



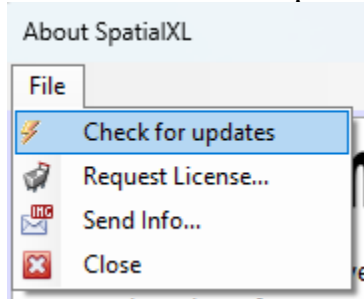
Legend	
Multi Intersection Layer - Selected items	
Status	
Planned	
Overmined	
Undermined	



- ✓ You can now update to the latest version right within SpatialXL itself. Simply go to “About SpatialXL” in the SpatialXL ribbon of Excel.



Then, in the About SpatialXL dialogue, click the File pull-down menu and select “Check for updates”



It will then let you know whether a later version of SpatialXL is available and you will be able to download it from here:



You can now also request a license or send your machine info using the “Request License” and “Send Info...” buttons found in the File pull-down menu as well.

# Support

---



T: +27871354351  
[support@primethought.biz](mailto:support@primethought.biz) - [primethought.biz](http://primethought.biz)  
Kyalami Estate, Midrand, Johannesburg,  
1684, South Africa

