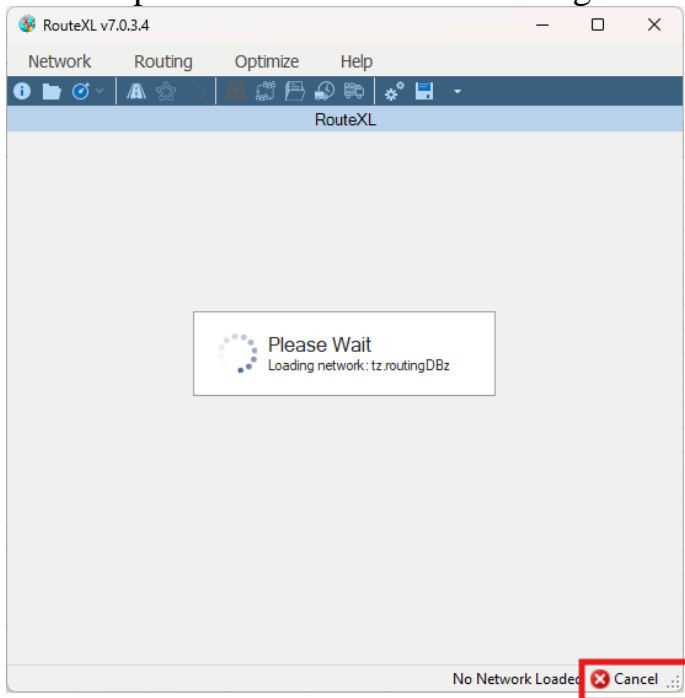
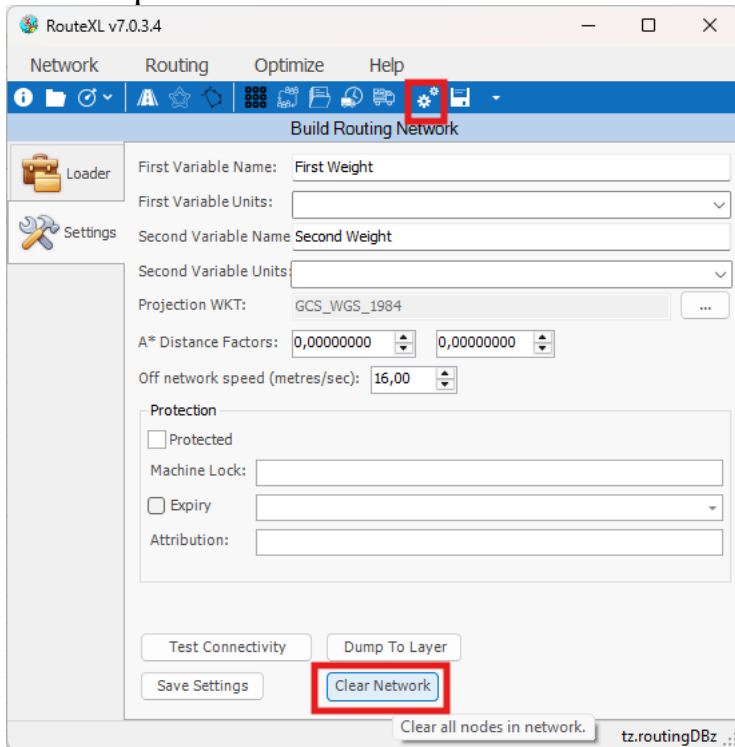


RouteXL 7.0.3.4 Release Notes

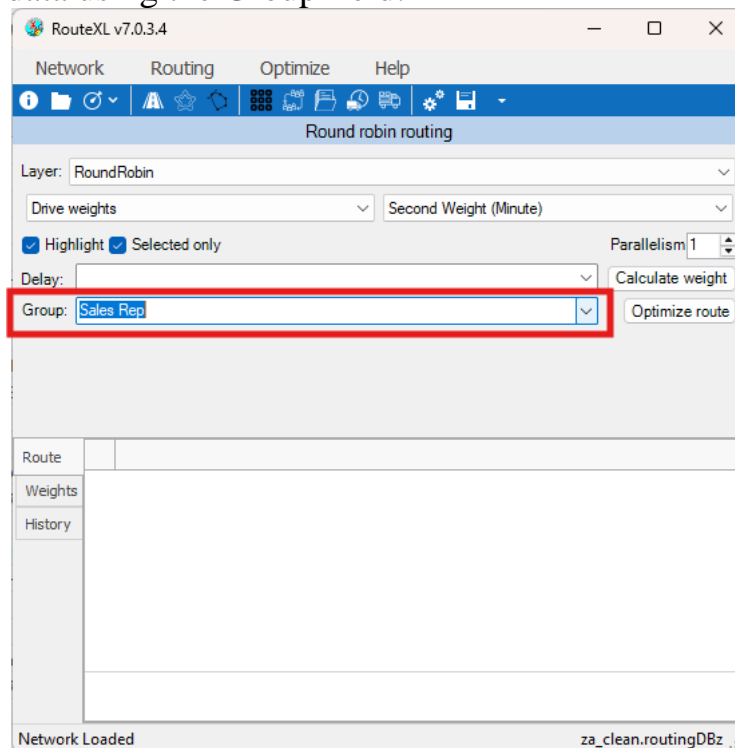
- ✓ Minor bugfixes.
- ✓ Fixes on Set to Set routing.
- ✓ Added option to cancel network during load on launch of RouteXL:



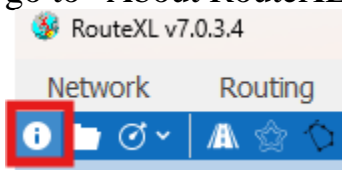
- ✓ Added option to clear current network after it has been loaded:



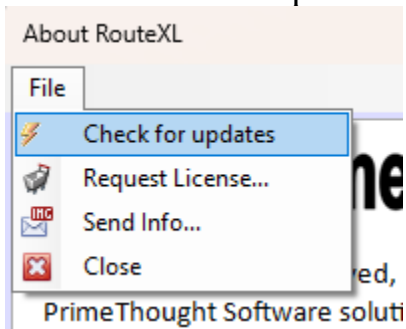
- ✓ Added new feature to Round Robin to be able to group routes by a field in your data using the Group field:



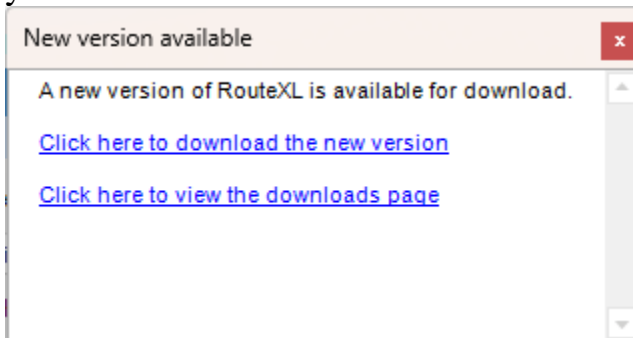
- ✓ You can now update to the latest version right within RouteXL itself. Simply go to “About RouteXL”:



Then, in the About RouteXL dialogue, click the File pull-down menu and select “Check for updates”



It will then let you know whether a later version of RouteXL is available and you will be able to download it from here:



You can now also request a license or send your machine info using the “Request License” and “Send Info...” buttons found in the File pull-down menu as well.

Support



T: +27871354351

support@primethought.biz - primethought.biz

Kyalami Estate, Midrand, Johannesburg,
1684, South Africa

